



Grove.

FIND YOUR HOME

Maybank Manor Way, Halesowen B62 8QZ

£1,300 Per Month

Home with a view

Homes at Maybank are finished to a high standard, showcasing refined, modern design and quality materials throughout. Spitfire's attention to detail is evident in every element of the specification, which includes:

Contemporary, high-quality interior finishes

Energy-efficient air-source heat pump

Electric vehicle charging point

Underfloor heating to the ground floor and thermostatically controlled radiators to the first floor (where applicable)

Bespoke designer kitchen

Oak-finish internal doors with chrome fittings

Built by award-winning Spitfire Homes, the development combines carefully considered layouts, striking architectural features and a focus on sustainability, creating stylish, comfortable homes in a desirable setting.







Location

Halesowen is a welcoming community in the West Midlands, known for its suburban tranquillity and urban convenience. The town features picturesque parks and green spaces, offering plenty of opportunities for outdoor activities and relaxation, making it ideal for families and individuals alike. Residents benefit from a wide range of local amenities and excellent schooling, including diverse shops, cafes, and restaurants in the bustling town centre. Halesowen's excellent commuter links make it a prime location for professionals. The town is well-connected by major road networks like the M5 motorway and offers comprehensive bus services and nearby train stations, ensuring easy access to Birmingham, Worcester, and other key destinations.





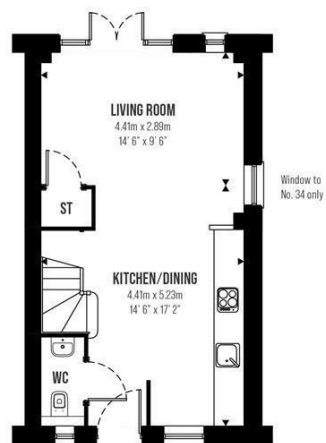


Grove.

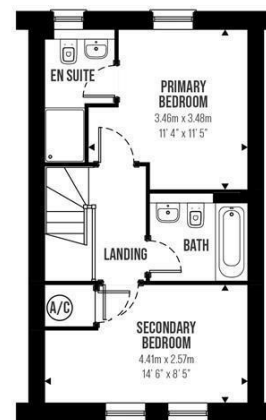
FIND YOUR HOME







GROUND FLOOR



FIRST FLOOR

IMPORTANT NOTICE: 1. No description or information given whether or not these particulars and whether written or verbal (information) about the property or it's value may be relied upon as a statement or representation of fact. Grove Properties Group do not have any authority to make representation and accordingly any information is entirely without responsibility of the part of Grove Properties Group or the seller. 2. The photographs (and artists impression) show only certain parts of the property at the time they were taken. Any areas, measurements or distances given are approximate only. 3. Any reference to alternations to, or use of any part of the property is not a statement that any necessary planning, building regulations or other consent has been obtained. 4. No statement is made about the condition of any service or equipment or whether they are year 2000 compliant.

VIEWINGS: View by appointment only with Grove Properties Group. Opening times:

Monday – Thursday 9.00AM to 5.30PM.

Friday 9.00AM – 5.00PM.

Saturday 9.00AM – 1.00PM.

Grove.

FIND YOUR HOME

Hagley
129 Worcester Road

Hagley
DY9 0NN

T: 01562 270 270

E: hagley@grovepropertiesgroup.co.uk

W: www.grovepropertiesgroup.co.uk