



Bury Meadow Lodge  
New North Road | Exeter | Devon | EX4 4HH





# BURY MEADOW LODGE

*Bury Meadow Lodge is a beautifully renovated, detached two bedroom property having distinctive period Grade II features, also offering a one bed studio. Located in the sought-after city centre of Exeter on the edge of Bury Meadow Park, this property could not be better suited for city life living.*







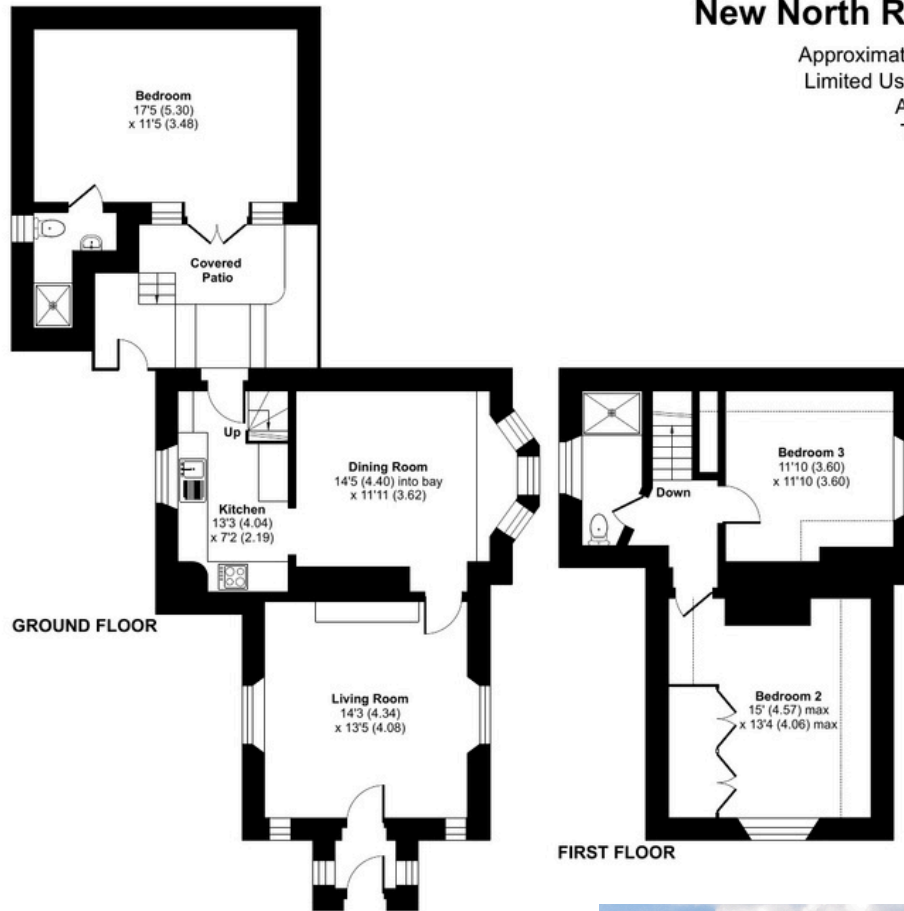
Built in the Tudor Gothic style, Bury Meadow Lodge dates from the 1850s. The property has retained a number of attractive character features including decorative bargeboards to all gables, stone mullioned glazing with diamond leaded panes and wooden flooring throughout.

The lodge has a drive, accessed via Woodbine Terrace, which provides private parking. The house has an inner private courtyard, as well as a low-maintenance paved garden, ideal for entertaining and al fresco dining, with views over Bury Meadow's parkland.

Situated at the edge of Bury Meadow, a public park which lies between the University of Exeter's Streatham campus and the city centre, the property enjoys a unique position within one of Exeter's most favoured residential areas.







## New North Road, Exeter, EX4

Approximate Area = 871 sq ft / 80.9 sq m

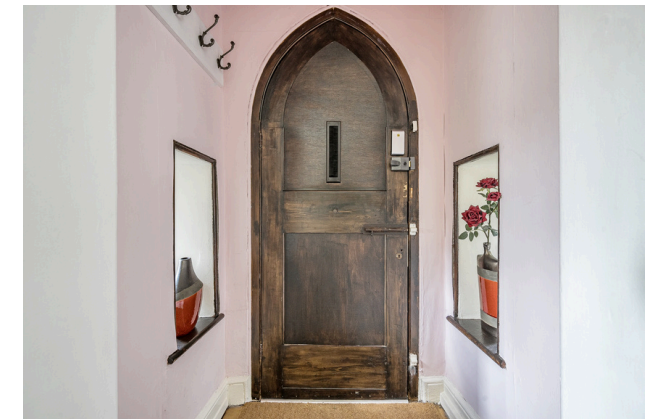
Limited Use Area(s) = 79 sq ft / 7.3 sq m

Annexe = 229 sq ft / 21.2 sq m

Total = 1179 sq ft / 109.4 sq m

For identification only - Not to scale

Denotes restricted  
head height



Floor plan produced in accordance with RICS Property Measurement 2nd Edition, Incorporating International Property Measurement Standards (IPMS2 Residential). © nitchecom 2025. Produced for Fine & Country Exeter Limited. REF: 1349841

## INFORMATION

### Services

- Mains water, electricity and drainage
- Gas central heating

### Key information

- Tenure: Freehold
- Council Tax: D
- Total plot Size: 0.04 acres

Contact us at:  
01392 573900  
exeter@fineandcountry.com