



Kilmartin Avenue, SW16
£685,000

Dexters



Kilmartin Avenue, SW16

Offers In Excess Of £650,000.

A very well presented, five bedroom Edwardian home with a landscaped south facing garden.

This family home offers three bedrooms on the first floor along with a modern bathroom, the loft extension provides a further two bedrooms and shower room. To the ground floor there is a spacious front reception, guest w.c, a sitting room which has been opened to the dining area and a separate kitchen, both of which overlook the pretty south facing garden.

This family home offers three bedrooms on the first floor along with a modern bathroom, the loft extension provides a further two bedrooms and shower room. To the ground floor there is a spacious front reception, guest w.c, a sitting room which has been opened to the dining area and a separate kitchen, both of which overlook the pretty south facing garden.

Kilmartin Avenue is a sought after road in the Scott Estate located between Norbury and Thornton Heath. The nearest mainline station is located at Norbury just 0.8 miles providing rail links to London Bridge and Victoria. Good schools are nearby, as are the recreational facilities of Norbury Park and Streatham Common recreational ground.

Features

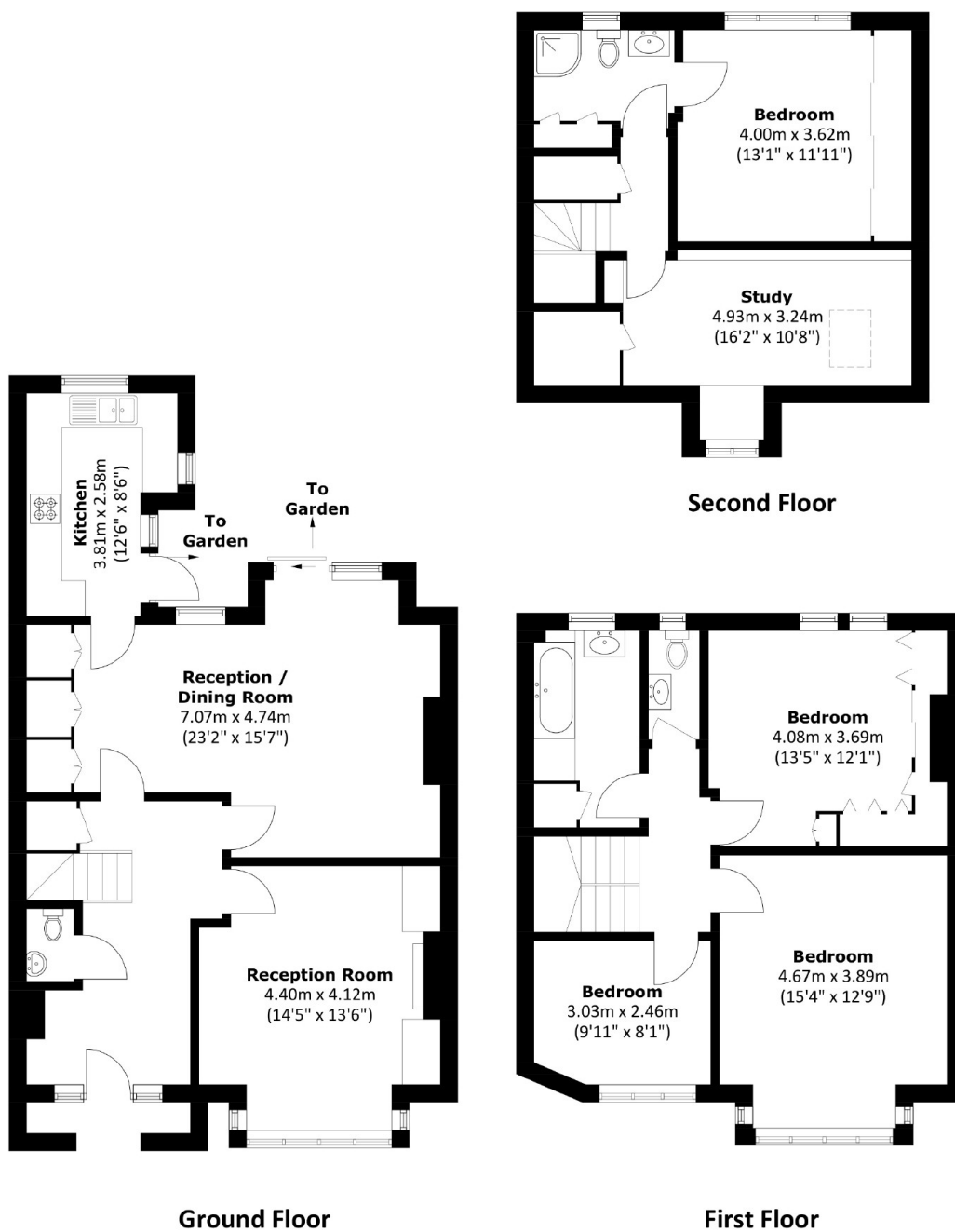
- Edwardian home
- Five bedrooms
- Two bathrooms
- South facing garden
- 0.8 miles from station
- Energy rating: C







Kilmartin Avenue, London, SW16



Total area: Approx. 164.2 sq. meters (1,767.4 sq. feet)

Dexters

Norbury
1341 London Road
Norbury
SW16 4BE
Sales
020 8629 8028

Energy Rating: C. We aim to make our particulars both accurate and reliable. However they are not guaranteed; nor do they form part of an offer or contract. If you require clarification on any points then please contact us, especially if you're traveling some distance to view. Please note that appliances and heating systems have not been tested and therefore no warranties can be given as to their good working order.

 **RICS** | Regulated
Estate Agent
and Letting Agent

[dexters.co.uk](https://www.dexters.co.uk)