



## Stanford Road, SW16

£2,600 Per calendar month

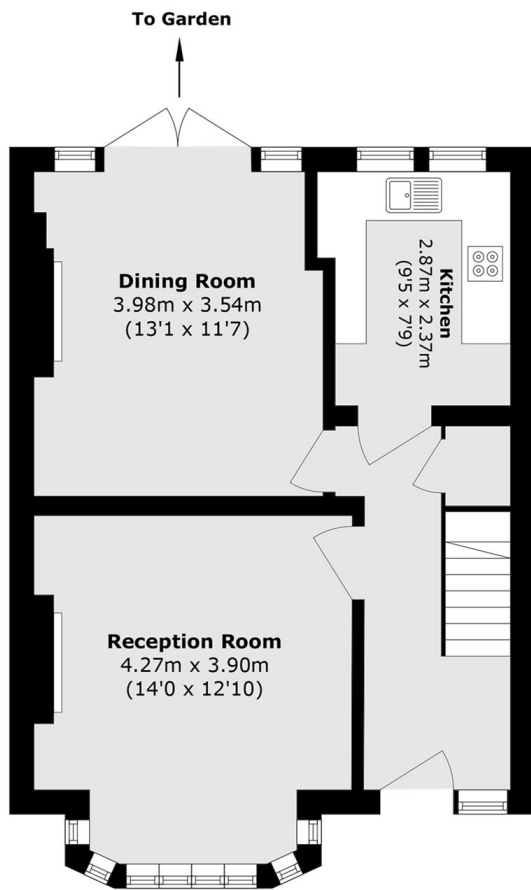
We are pleased to present this exceptionally well-presented three double bedroom terraced house, ideal for families or professional sharers. The accommodation is in excellent condition throughout and comprises a spacious reception/dining room opening into a modern fitted kitchen, along with a stylishly updated bathroom. The property further benefits from a generously sized private garden and is conveniently located close to local shops, amenities, and Norbury Station.

Stanford Road is conveniently situated just 0.5 Miles from Norbury train station and the town centre, which offers a variety of local restaurants and shops. The property also benefits from easy access to local schools, including state and grammar schools, and the open green space of Norbury Park, making it an ideal location for families.

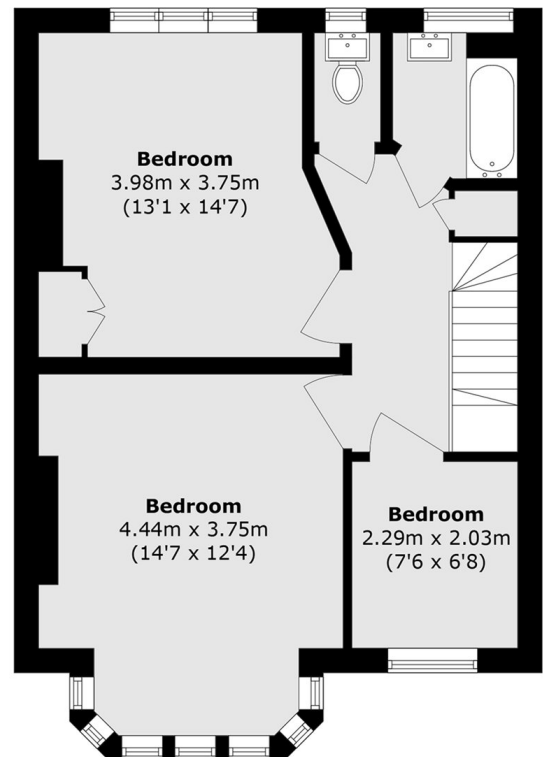
### Features

- Three Double Bedrooms
- Modern Kitchen
- Private Garden
- Terraced House
- Excellent Condition
- Close To Shops & Amenities

# Stanford Road, London, SW16



**Ground Floor**



**First Floor**

Total area (approx.): 93.4 sq. m (1005.3 sq. ft)