



Norbury Court Road, SW16
£650,000

Dexters



Norbury Court Road, SW16

A wider-than-average three-bedroom house featuring a spacious extended kitchen and a bright garden room, offering generous living space throughout.

Located on a popular residential road, this well-presented family home offers generous and versatile living accommodation. The ground floor features a wide entrance hall with a guest cloakroom, a separate family reception room, and an extended kitchen/dining room with underfloor heating that flows through to a bright conservatory. Upstairs, there are two large double bedrooms, an additional single bedroom, and a modern family bathroom. Outside, the low-maintenance rear garden is laid with Astroturf and includes a useful garden room, ideal as a home office, studio, or leisure space.

Located on a popular residential road, this well-presented family home offers generous and versatile living accommodation. The ground floor features a wide entrance hall with a guest cloakroom, a separate family reception room, and an extended kitchen/dining room with underfloor heating that flows through to a bright conservatory. Upstairs, there are two large double bedrooms, an additional single bedroom, and a modern family bathroom. Outside, the low-maintenance rear garden is laid with Astroturf and includes a useful garden room, ideal as a home office, studio, or leisure space.

Situated in a well-established residential area with good transport links, local shops, schools and amenities close by.

Features

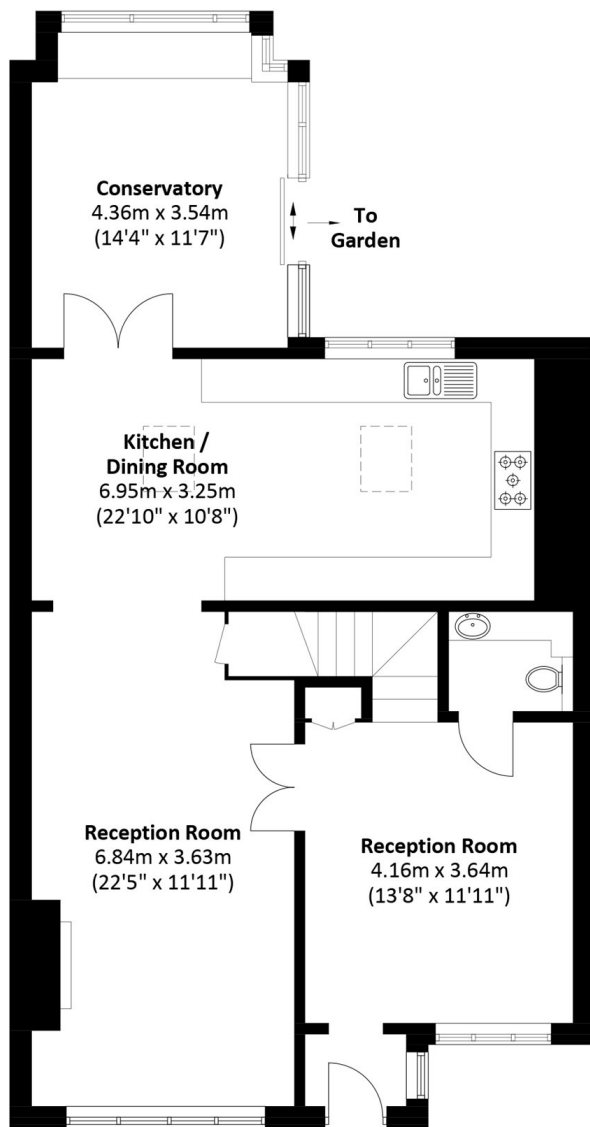
- Three bedrooms
- Open kitchen/dining room
- Wider than average
- Garden room
- Low maintenance garden
- EPC: C



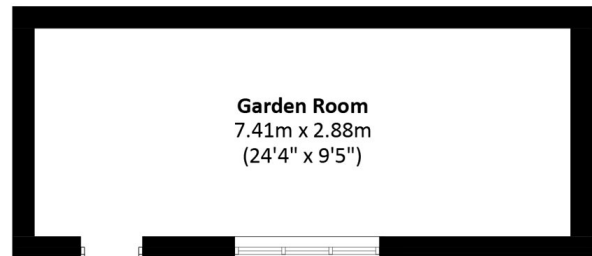




Norbury Court Road, London, SW16



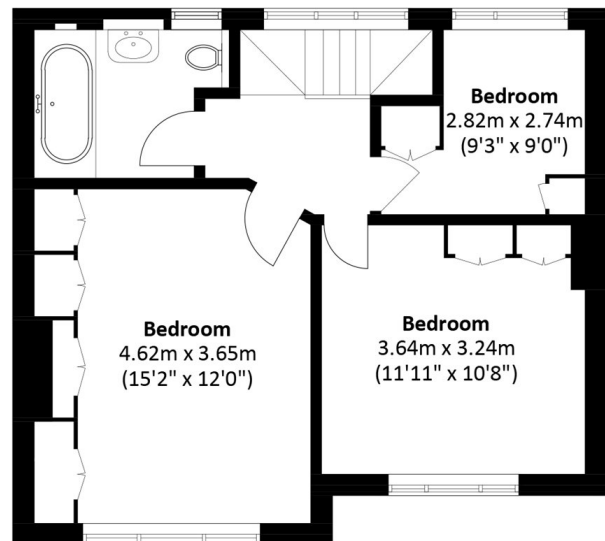
Ground Floor



To
Garden

Outbuilding

(Not Shown In Actual Location / Orientation)



First Floor

Total area: Approx. 137.8 sq. meters (1,483.3 sq. feet)
Garden Room. 21.5 sq. meters (231.4 sq. feet)