



Veronica Gardens, SW16

£295,000

A newly refurbished, two double bedroom apartment located within a private development with off street parking and no onward chain.

Veronica Gardens is situated in Streatham Vale and is 0.7 miles away from Streatham Common station by foot which will take you directly into London. There is also a wide range of shops, bars and restaurants nearby on Streatham High Road.

Features

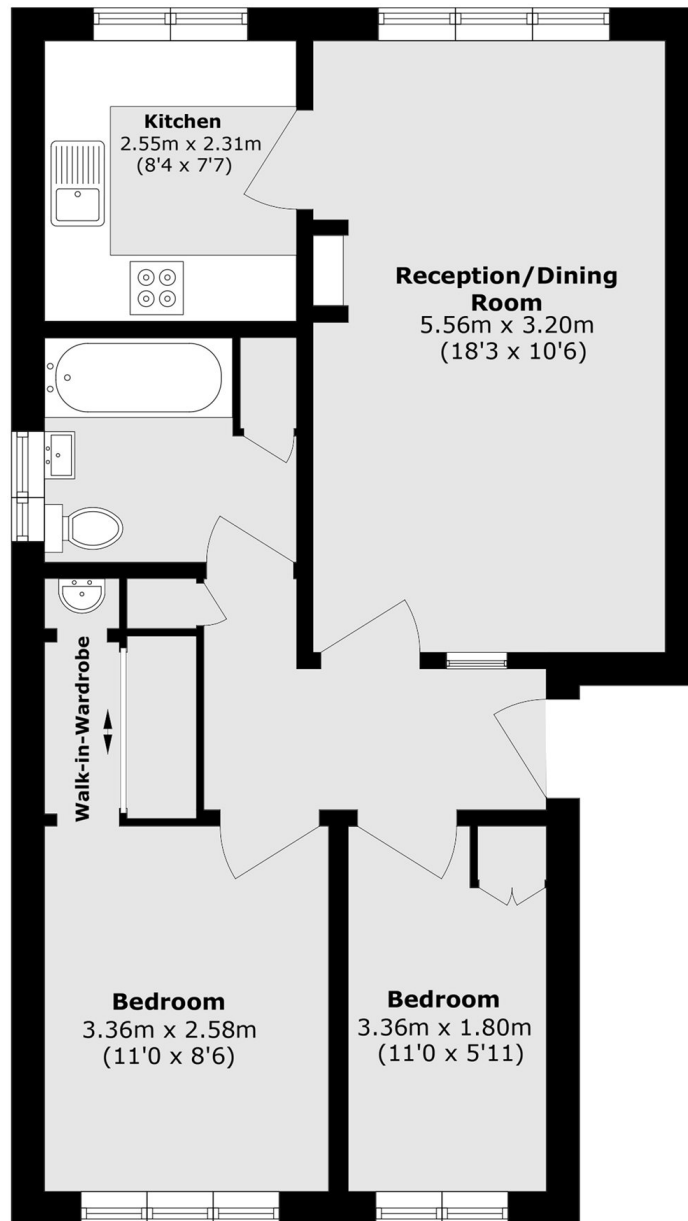
Two double bedrooms
Newly refurbished
0.7 miles to station
Allocated parking
Chain free
EPC: D



Veronica Gardens, SW16



Veronica Gardens, London, SW16



Total area (approx.): 53.7 sq. m (578 sq. ft)