



Boston Road, CR0

£2,000 Per calendar month

A well presented three bedroom terrace house with a private garden. The property benefits from a bright reception room, separate kitchen and dining area. The property has been recently decorated throughout and would be an ideal family home.

Boston Road, is approximately 1.3 kilometres (0.8 miles) from West Croydon Station, providing direct train and Overground services to London Bridge, London Victoria, and Canada Water. Nearby Ampere Way Tram Stop also connects residents to Croydon town centre and Wimbledon. With strong transport links, good local schools, and a variety of amenities on the doorstep this property is perfectly located.

Features

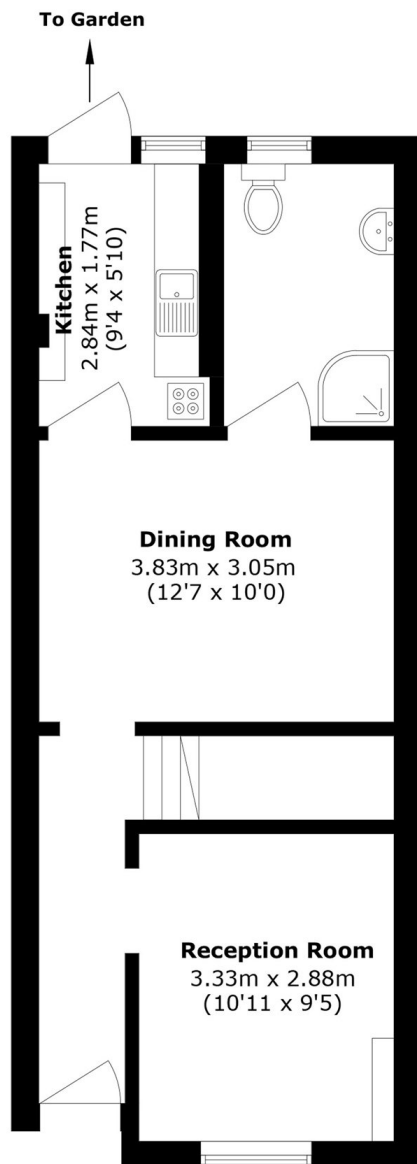
- Three Bedrooms
- Family Home
- Garden
- Kitchen diner
- Reception



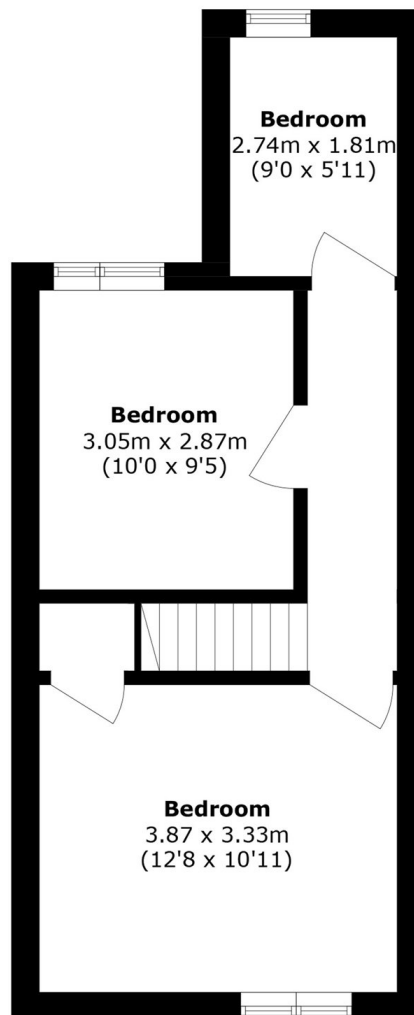
Boston Road, CR0



Boston Road, Croydon, CR0



Ground Floor



First Floor

Total area (approx.): 74.6 sq. m (802.9 sq. ft)