



## Stanford Road, SW16

£350,000

Ideally located just 0.4 miles from Norbury Station, this two bedroom ground floor flat offers a private garden, off street parking and 115 year lease.

Stanford Road is a quiet residential street set just off Norbury town centre. The nearest mainline station, Norbury, is only 0.4 miles away, offering regular rail services to London Bridge and London Victoria. The area is well served by amenities, highly regarded schools, with Norbury Park and Streatham Common also nearby, providing excellent recreational facilities.

### Features

Ground Floor  
Two bedrooms  
Private garden  
Off street parking  
0.4 miles to station  
EPC:

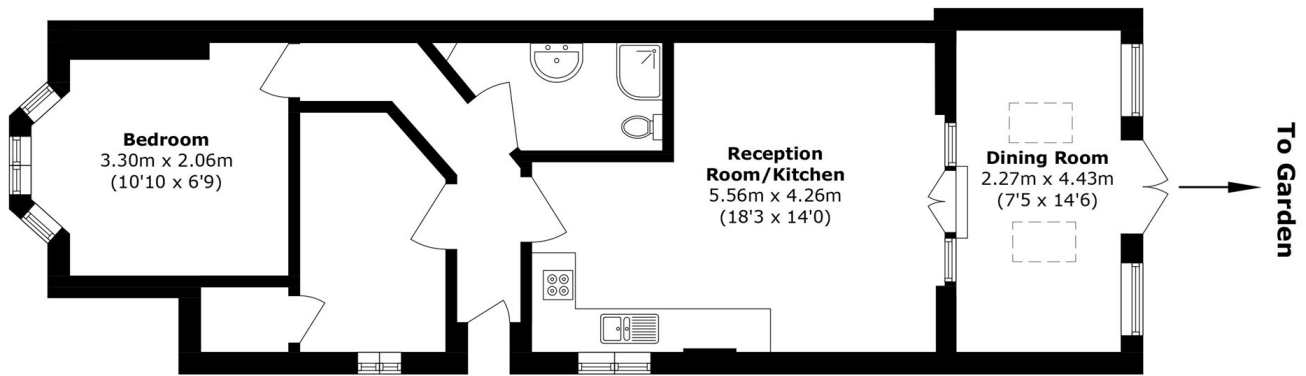


Stanford Road, SW16





Stanford Road,  
London, SW16



Total area (approx.): 60.3 sq. m (649.0 sq. ft)

**Dexters**

Norbury  
1341 London Road  
Norbury  
SW16 4BE  
Sales  
020 8629 8028

Energy Rating: D. We aim to make our particulars both accurate and reliable. However they are not guaranteed; nor do they form part of an offer or contract. If you require clarification on any points then please contact us, especially if you're traveling some distance to view. Please note that appliances and heating systems have not been tested and therefore no warranties can be given as to their good working order.

 **RICS** | Regulated  
Estate Agent  
and Letting Agent

[dexters.co.uk](https://www.dexters.co.uk)