



Covington Way, SW16
£700,000

Dexters



Covington Way, SW16

A large semi-detached family home on Covington Way located opposite Streatham Common and the Rookery Gardens. The property benefits from five bedrooms and off street parking.

Covington Way is ideally located close to the wide variety of cafés and other local amenities Streatham High Road has to offer. Transport links are found at Streatham Station and Norbury train stations providing convenient links to the City. The wide green open spaces of Streatham Common, The Rookery and Norwood Grove are also close by.

Features

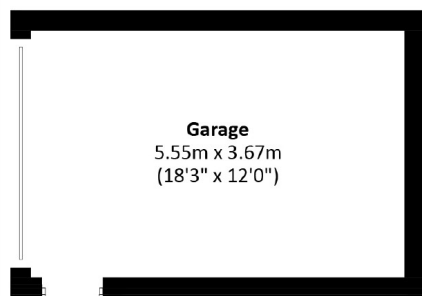
- Five Bedrooms
- Off Street Parking
- Large Garden
- Semi-detached Family House
- Open Plan Kitchen
- EPC Rating:



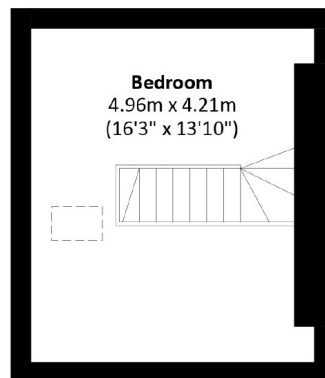




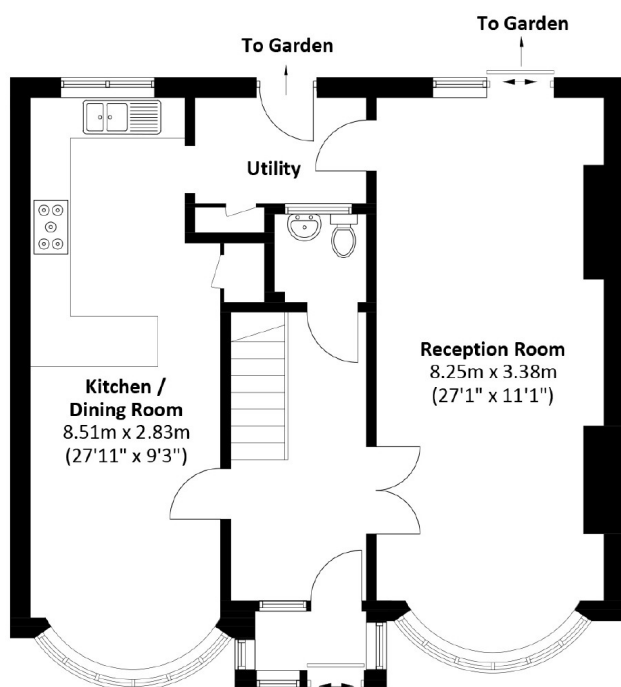
Covington Way, London, SW16



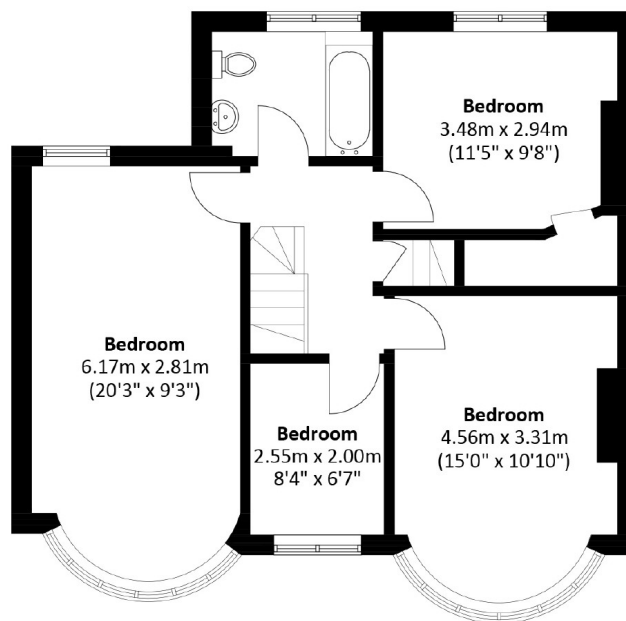
To Garden
(Not Shown In Actual Location / Orientation)



Second Floor



Ground Floor



First Floor

Total area: Approx. 153.1 sq. meters (1,648.0 sq. feet)
Garage: Approx. 20.5 sq. meters (220.7 sq. feet)