



Norbury Court Road, SW16
£750,000

Dexters



Norbury Court Road, SW16

Welcome to this impressive c2,00 sq ft five-bedroom semi-detached Edwardian house, ideally located on Norbury Court Road in SW16. Boasting generous living space, recent updates and excellent potential, this property is perfect for families or anyone seeking a home with room to grow.

Entering via the modernised front, you're welcomed into a bright hallway leading to spacious reception areas. The layout flows sensibly with separate living and dining zones that connect seamlessly with the kitchen. Upstairs, the first and second floors each accommodate well-sized bedrooms. The loft adds a versatile extra room, which could serve as an additional bedroom, home office, or creative space, benefitting from an en suite. Throughout the home, recently updated fixtures and finishes lend a clean, fresh feel. Character elements remain where appropriate, balanced with modern upgrades to heating, lighting, and overall décor.

This home will suit families needing multiple bedrooms, professionals working from home who want extra space, or anyone looking for a property with room for expansion without compromising on comfort. With recent modernisation upfront and the loft extension already in place, there's much of the heavy lift work done simply move in and personalise to taste.

Features

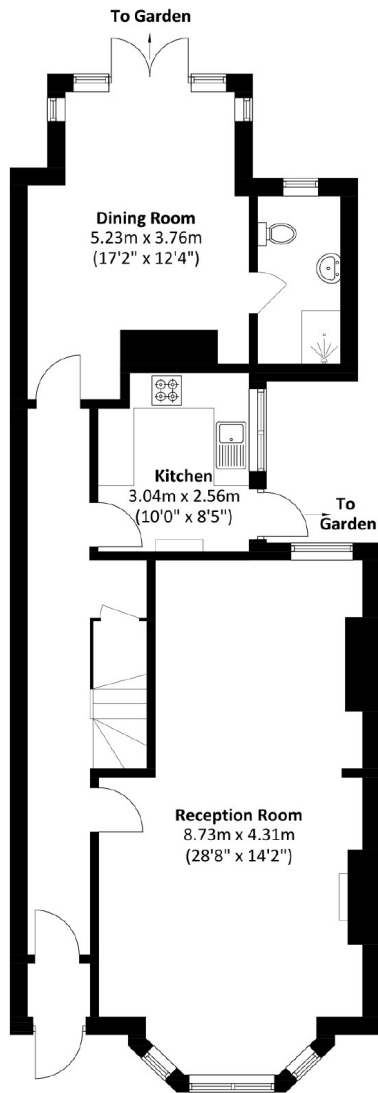
- Five bedrooms
- 2,027 sq ft
- Three floors
- Generous rear garden
- Semi-Detached
- Energy rating: D



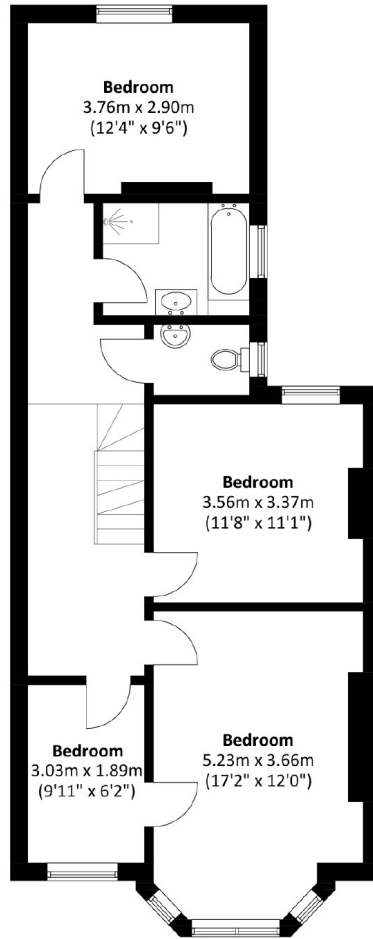




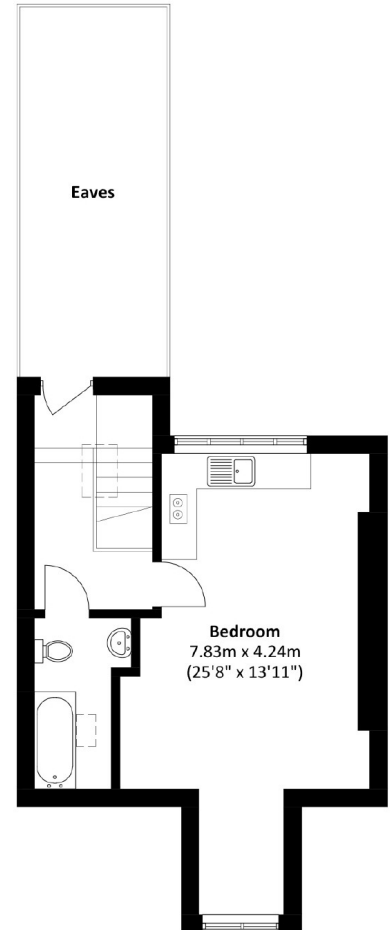
Norbury Court Road, London, SW16



Ground Floor



First Floor



Second Floor

Total area: Approx. 188.4 sq. meters (2,027.8 sq. feet)
(Excluding Eaves)