



Winterbourne Road, CR7

£375,000

A well presented, two double bedroom end of terrace house located on a quiet residential road with a south facing garden.

Located off the London Road (A23) offering regular buses into central of Croydon. Thornton Heath train station is 0.6 miles from the property.

Features

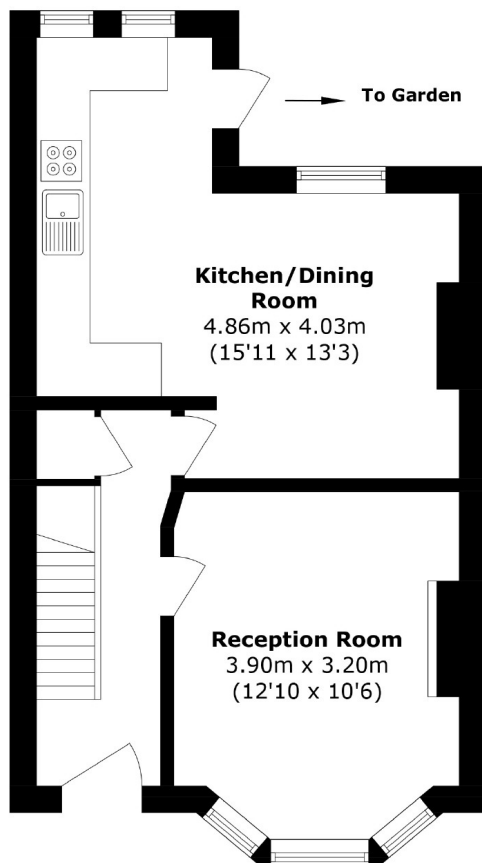
- Two bedrooms
- End of terrace
- Upstairs bathroom
- South facing garden
- Well presented
- EPC D



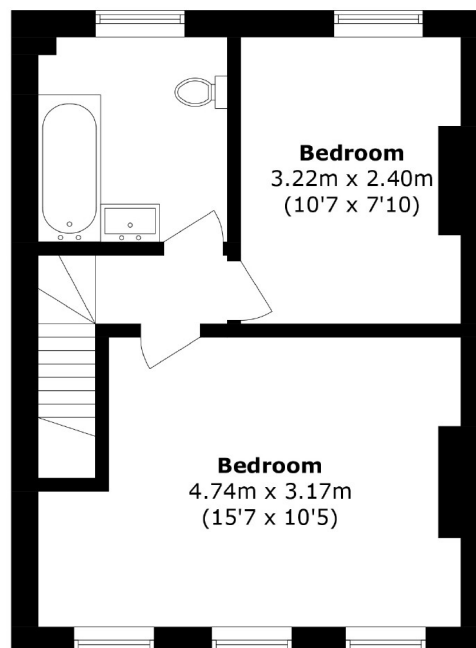
Winterbourne Road, CR7



Winterbourne Road, Thornton Heath, CR7



Ground Floor



First Floor

Total area (approx.): 67.4 sq. m (725.4 sq. ft)