



Wharfedale Gardens, CR7
£595,000

Dexters



Wharfedale Gardens, CR7

Beautifully presented Three bedroom family home on the ever popular Wharfedale gardens. Boasting a spacious extension to the rear accommodating the contemporary Kitchen diner, separate front reception, downstairs WC, three well appointed bedrooms, family bathroom and off street parking to the front of the property.

Three bedrooms, modern kitchen diner, extended, downstairs WC, well presented garden, off street parking.

Located off the London road (A23) bordering SW16 Wharfedale gardens offers regular buses into London and Croydon. Norbury station (zone 3) is located within a mile of the property

Features

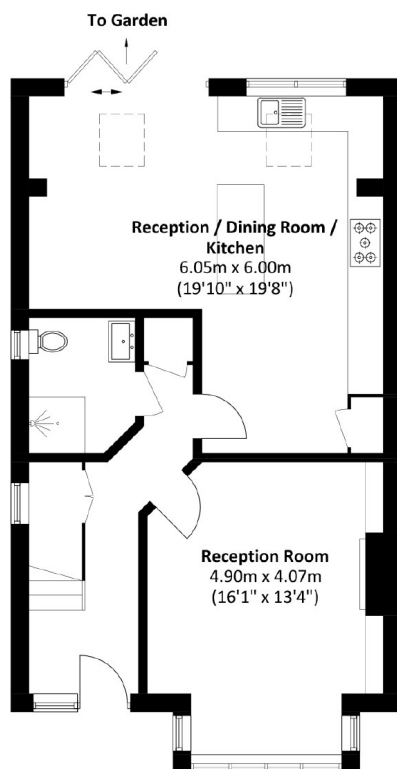
- Three bedrooms
- Extended
- Contemporary Kitchen diner
- Off street parking
- Quiet location
- EPC D



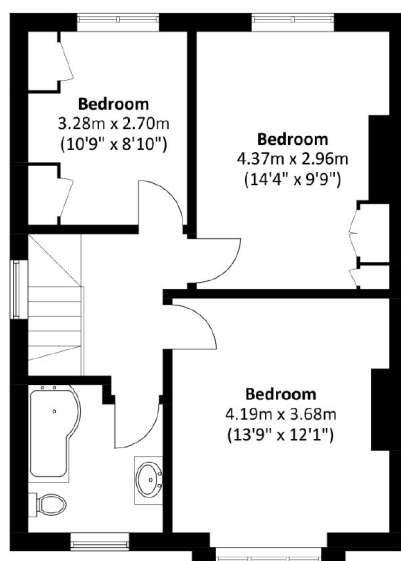




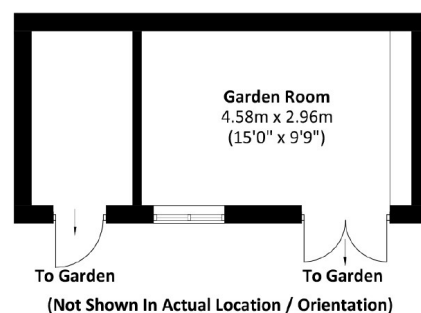
Wharfedale Gardens, Thornton Heath, CR7



Ground Floor



First Floor



Outbuilding

Total area: Approx. 116.4 sq. meters (1,252.9 sq. feet)
Outbuilding : Approx. 19.0 sq. meters (204.5 sq. feet)