



Norbury Cross, SW16  
£600,000

**Dexters**



## Norbury Cross, SW16

Offers in excess of £600,000.

This well-presented four bedroom family home is situated on a well-sought after location, 0.9 miles away from Norbury Station. With a double driveway and a private garden, this property is perfect for families.

The double driveway welcomes you to a spacious and bright reception room and kitchen and dining room, leading to the private garden to the rear. The first floor presents three well proportioned bedrooms with plenty of storage space and natural light. The first floor also features a family bathroom. The second floor presents the fourth bedroom with an ensuite and plenty of eaves storage.

The double driveway welcomes you to a spacious and bright reception room and kitchen and dining room, leading to the private garden to the rear. The first floor presents three well proportioned bedrooms with plenty of storage space and natural light. The first floor also features a family bathroom. The second floor presents the fourth bedroom with an ensuite and plenty of eaves storage.

Norbury cross is conveniently located 0.9 miles from Norbury train station and the town centre, which offers a variety of local restaurants and shops. The property has easy access to local schools and including state and grammar schools, as well

### Features

- Four Bedrooms
- Private garden
- Double driveway
- 0.9 Miles from station
- Terraced





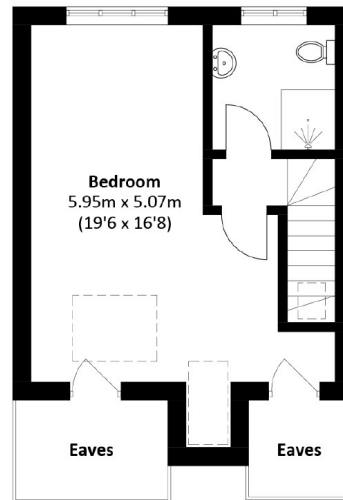




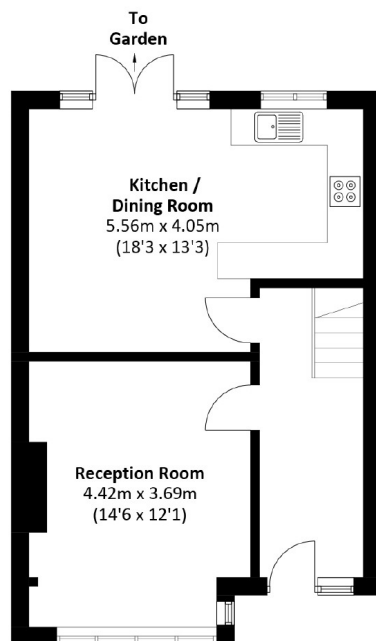




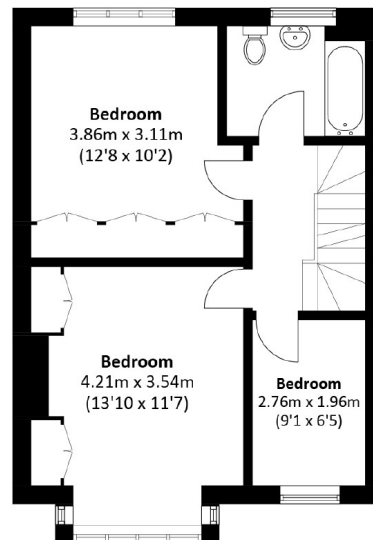
# Norbury Cross, London, SW16



**Second Floor**



**Ground Floor**



**First Floor**

Total area: Approx. 121.6 sq. meters (1,308.3 sq. feet)  
(Excluding Eaves)