



Kilmartin Avenue, SW16

£325,000

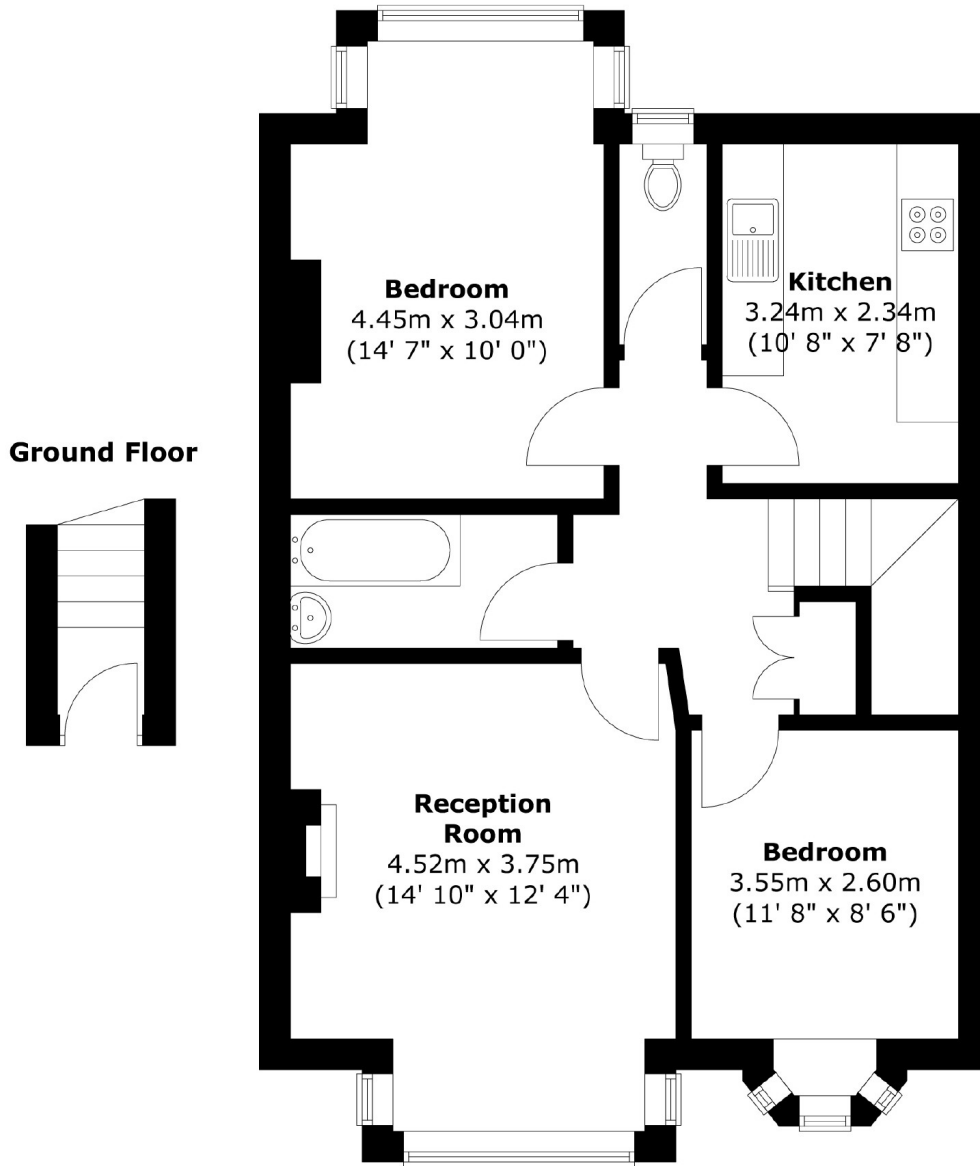
A first floor, two double bedroom period conversion, presented in excellent condition located just 0.7 miles from Norbury station. Energy rating:



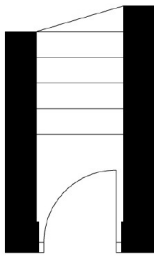
Kilmartin Avenue is a sought after road in the Scott Estate located between Norbury and Thornton Heath. The nearest mainline station is located at Norbury just 0.7 Miles providing rail links to London Bridge and Victoria. Good schools are nearby, as are the recreational facilities of Norbury Park and Streatham Common recreational ground.



First Floor



Ground Floor



Total area (approx.) : 63.3 sq. m (681 sq. ft)

James Alexander
1341 London Road,
Norbury, SW16 4BE
020 8629 8028
norburysales@jamesalexander.com

Energy Rating: We aim to make our particulars both accurate and reliable. However they are not guaranteed; nor do they form part of an offer or contract. If you require clarification on any points then please contact us, especially if you're travelling some distance to view. Please note that appliances and heating systems have not been tested and therefore no warranties can be given as to their good working order.