



Chilmark Road, SW16

£525,000

A well presented, three bedroom end of terrace family home with an extended openplan kitchen and offer street parking.

Chilmark Road is conveniently situated just 0.8 Miles from Norbury train station and the town centre, which offers a variety of local restaurants and shops. The property also benefits from easy access to local schools.

Features

- Three bedrooms
- End of terrace
- Off street parking
- Extended kitchen
- Garden studio
- EPC:TBC

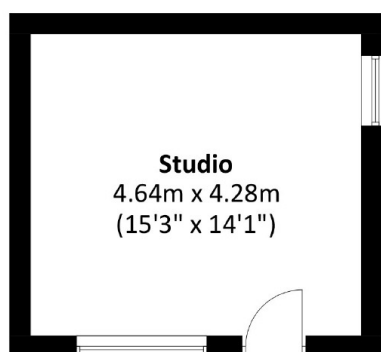


Chilmark Road, SW16

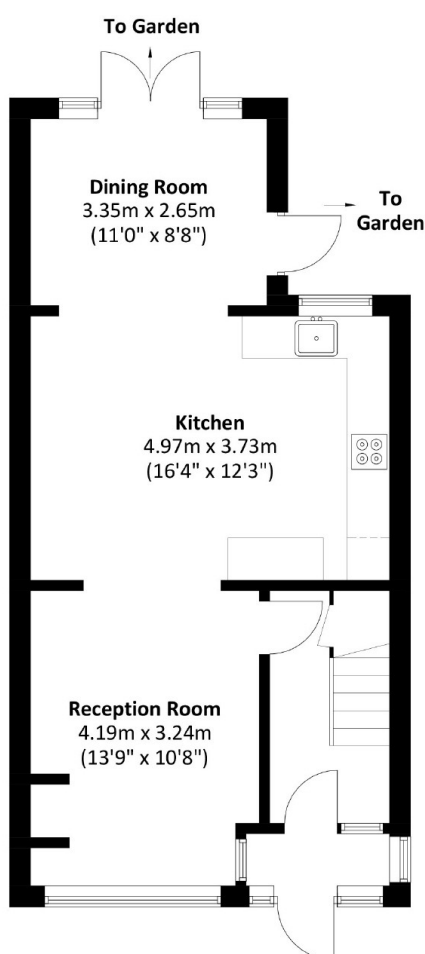
This charming family home features three well-proportioned bedrooms on the first floor, along with a modern bathroom and access to a versatile loft space. On the ground floor, you'll find a spacious front reception room, a rear dining area seamlessly connected to the kitchen/breakfast room, and a bright rear extension that opens directly onto the garden along with studio room.



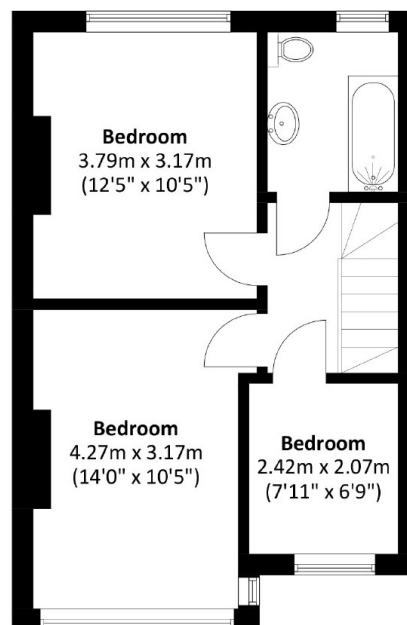
Chilmark Road, London, SW16



Studio
4.64m x 4.28m
(15'3" x 14'1")
(Not Shown In Actual
Location / Orientation)



Ground Floor



First Floor

Total area: Approx. 91.6 sq. meters (985.9 sq. feet)
Studio, approx. 20.2 sq. meters (217.4 sq. feet)