



Abbotts Road, CR4

£525,000

Updated three bedroom family home with open plan kitchen/dinning room and off street parking.

Having recently been update the accommodation comprise entrance hall leading to front reception room and modern open plan kitchen/dining room to the rear, Upstairs are two double bedrooms, a further single bedroom and four piece bathroom. Externally there is off street parking to the front, Westerly aspect rear garden and garage.

Abbotts Road is conveniently situated between Mitcham Eastfields and Norbury train station, and the town centre, which offers a variety of local restaurants and shops. The

Features

- Three bedrooms
- Garage and driveway
- Modern finish
- Openplan kitchen
- Chain free
- EPC

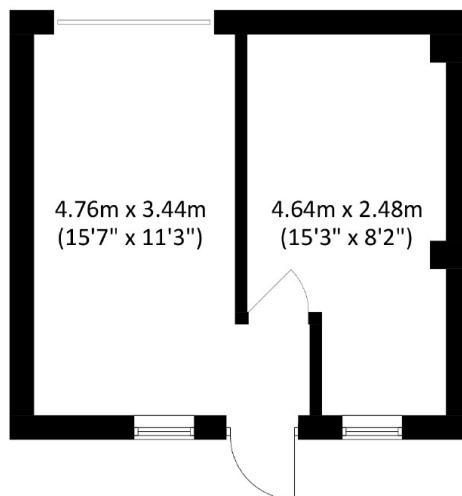


Abbotts Road, CR4

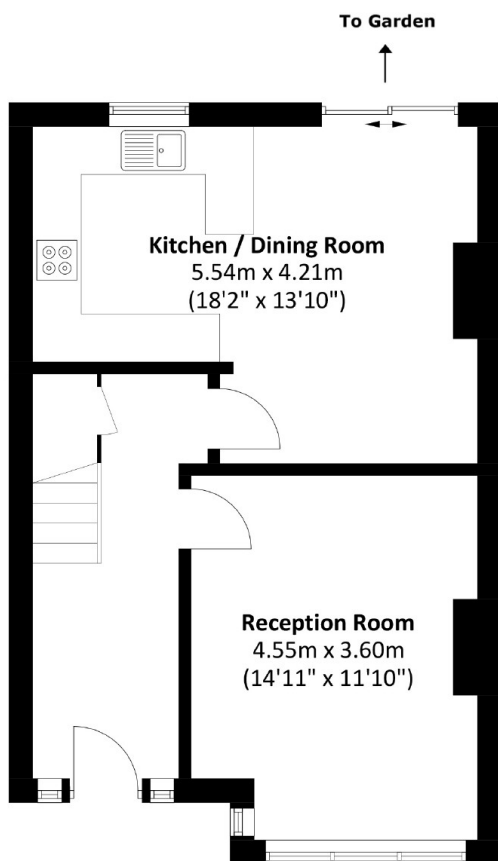
Having recently been update the accommodation comprise entrance hall leading to front reception room and modern open plan kitchen/dining room to the rear, Upstairs are two double bedrooms, a further single bedroom and four piece bathroom. Externally there is off street parking to the front, Westerly aspect rear garden and garage.



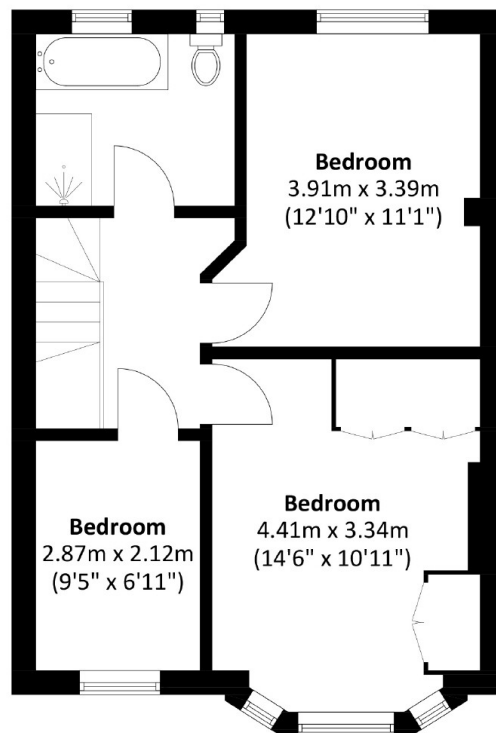
Abbotts Road, Mitcham, CR4



Outhouse



Ground Floor



First Floor

Total area: Approx. 92.7 sq. meters (997.8 sq. feet)
Outhouse area approx. 24.6 sq. meters (264.8 sq. feet)

Dexters

Norbury
1341 London Road
Norbury
SW16 4BE
Sales
020 8629 8028

Energy Rating: C. We aim to make our particulars both accurate and reliable. However they are not guaranteed; nor do they form part of an offer or contract. If you require clarification on any points then please contact us, especially if you're traveling some distance to view. Please note that appliances and heating systems have not been tested and therefore no warranties can be given as to their good working order.

 **RICS** | Regulated
Estate Agent
and Letting Agent

dexters.co.uk