



Dalmeny Avenue, SW16
£575,000

Dexters



Dalmeny Avenue, SW16

A three bedroom family home located in the popular Scott's estate with an through reception room and extended kitchen.

This family home offers three bedrooms on the first floor along with a family bathroom. To the ground floor there is a spacious through reception room and extended kitchen opening to the large rear garden.

Dalmeny Avenue is a sought after road in the Scotts Estate located between Norbury and Streatham. The nearest mainline station is located at Norbury just 0.6 Miles providing rail links to London Bridge and Victoria. Good schools are nearby, as are the recreational facilities of Norbury Park and Streatham Common recreational ground.

Features

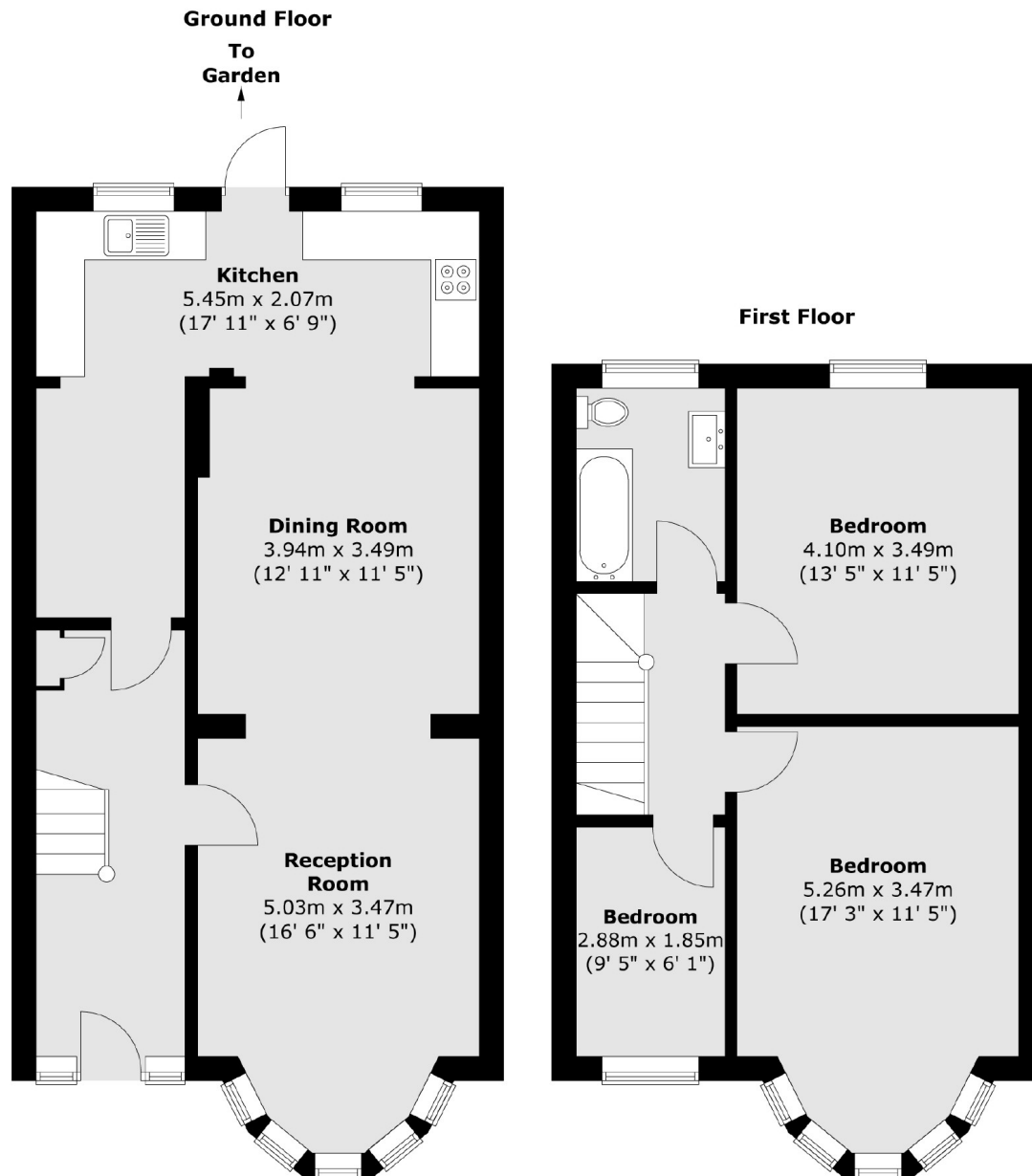
- Three bedrooms
- Through reception room
- Extended kitchen
- Large garden
- 0.6 miles to station
- EPC







Dalmeny Avenue, London, SW16



Total area (approx.) : 108 sq. m (1162 sq. ft)

Dexters

Norbury
1341 London Road
Norbury
SW16 4BE
Sales
020 8629 8028

Energy Rating: C. We aim to make our particulars both accurate and reliable. However they are not guaranteed; nor do they form part of an offer or contract. If you require clarification on any points then please contact us, especially if you're traveling some distance to view. Please note that appliances and heating systems have not been tested and therefore no warranties can be given as to their good working order.

 **RICS** | Regulated
Estate Agent
and Letting Agent

[dexters.co.uk](https://www.dexters.co.uk)