



Pollards Hill South, SW16

£600,000

A three bedroom end of terrace family home located on Pollards Hill South, screen behind a mature front garden with with driveway and garage.

Pollards Hill South is conveniently situated just 0.9 miles from Norbury train station and the town centre, which offers a variety of local restaurants and shops. The property also benefits from easy access to local schools, including state and grammar schools, and adjoins the open green space of Pollards Hill, making it an ideal location for families.

Features

- End of terrace
- Three bedrooms
- Garage and driveway
- Private garden
- Scope to update
- EPC: E



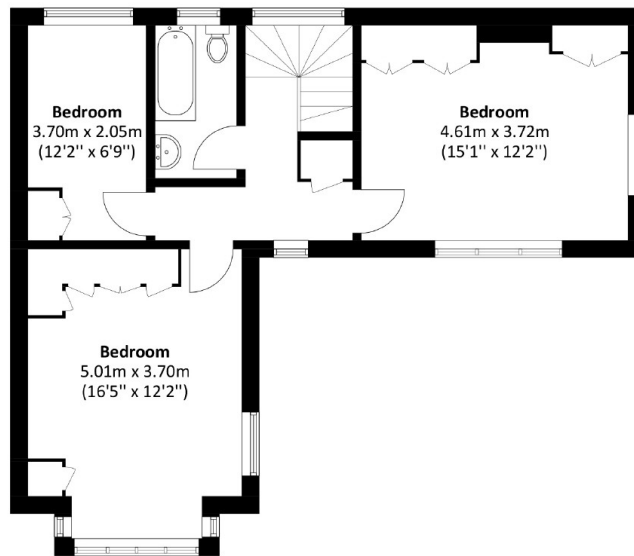
Pollards Hill South, SW16

The accommodation features three bedrooms and a bathroom on the first floor. On the ground floor, you'll find two spacious reception rooms, a kitchen/breakfast room overlooking the garden, and a shower room.

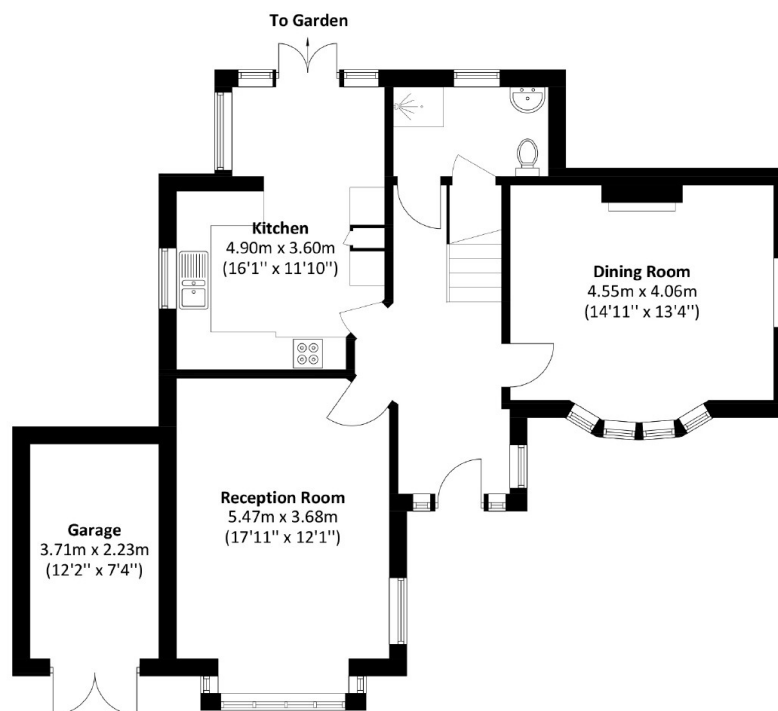
Outside, there's a large, well-established front garden with a driveway leading to the garage, and a private garden at the rear of the property.



Pollards Hill South, London, SW16



First Floor



Ground Floor

Total area: Approx. 126.3 sq. meters (1,359.4 sq. feet)

Garage, approx. 8.5 sq. meters (91.5 sq. feet)

Total area: Approx. 134.8 sq. meters (1,450.9 sq. feet)

Dexters

Norbury
1341 London Road
Norbury
SW16 4BE
Sales
020 8629 8028

Energy Rating: E. We aim to make our particulars both accurate and reliable. However they are not guaranteed; nor do they form part of an offer or contract. If you require clarification on any points then please contact us, especially if you're traveling some distance to view. Please note that appliances and heating systems have not been tested and therefore no warranties can be given as to their good working order.

 **RICS** | Regulated
Estate Agent
and Letting Agent

[dexters.co.uk](https://www.dexters.co.uk)