



Crescent Way, SW16
£750,000

Dexters



Crescent Way, SW16

A spacious, three bedroom semi detached home overlooking Streatham Common, with off street parking and garage. Modernisation is required.

The accommodation comprises, entrance hall leading to the two large reception rooms, kitchen and ground floor shower room. Upstairs are three bedrooms, w.c and bathroom. Externally the property has off street parking and a garage to the front along with a pretty rear garden.

The accommodation comprises, entrance hall leading to the two large reception rooms, kitchen and ground floor shower room. Upstairs are three bedrooms, w.c and bathroom. Externally the property has off street parking and a garage to the front along with a pretty rear garden.

Crescent way is one of the most sought after roads in Streatham Park, lying just 0.4 Miles from Norbury Station and 1.0 miles from Streatham Common Station. This quiet residential road is also only a short distance from both The Rookery and over looks Streatham Common.

Features

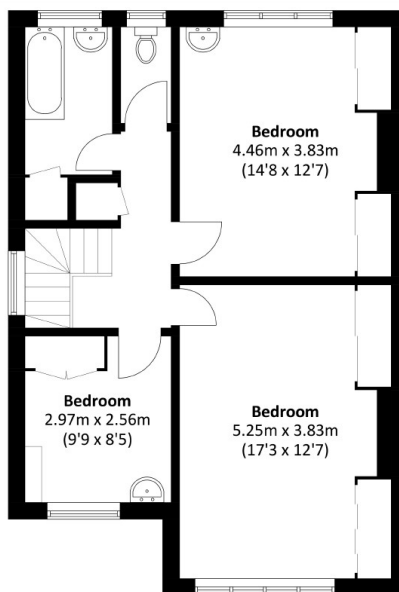
- Semi detached
- Three bedrooms
- Overlooking common
- Modernisation required
- Garage and driveway
- EPC: D



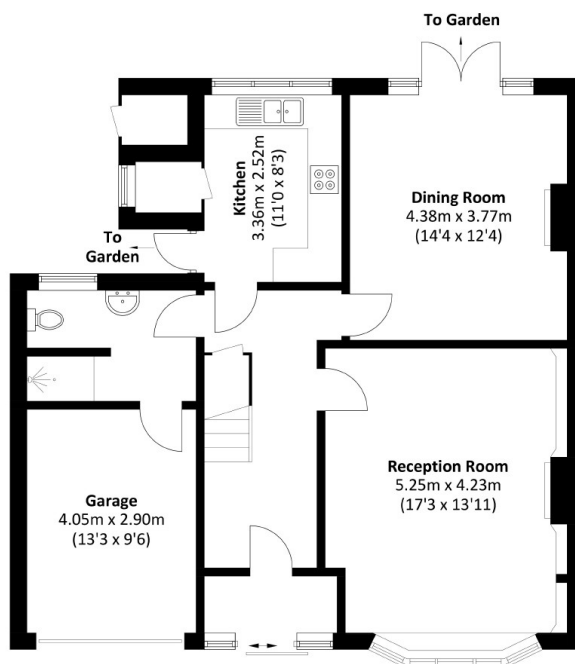




Crescent Way, London, SW16



First Floor



Ground Floor

Total area: Approx. 144.8 sq. meters (1558.6 sq. feet)
External Storage: 1.0 sq. meters (11.0 sq. feet)

Dexters

Norbury
1341 London Road
Norbury
SW16 4BE
Sales
020 8629 8028

Energy Rating: D. We aim to make our particulars both accurate and reliable. However they are not guaranteed; nor do they form part of an offer or contract. If you require clarification on any points then please contact us, especially if you're traveling some distance to view. Please note that appliances and heating systems have not been tested and therefore no warranties can be given as to their good working order.

 **RICS** | Regulated
Estate Agent
and Letting Agent

[dexters.co.uk](https://www.dexters.co.uk)