



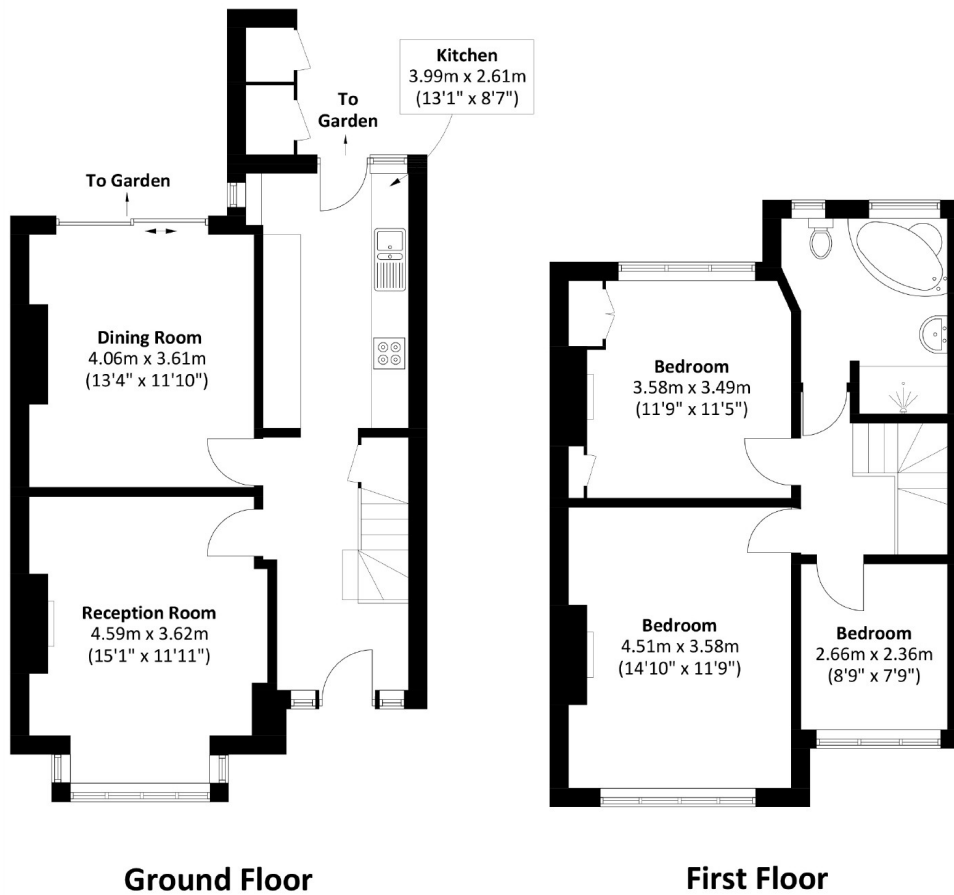
Melfort Road, CR7

£525,000

Retaining many of its original period features, this three bedroom house is ideal for those looking to put their stamp on their new home. Energy rating: D.

Melfort Road is conveniently located just 0.5 miles from Thornton Heath station and 1 mile from Norbury Station along with the area's local shop, restaurants and schools.

Three bedroom house, Private garden, Off street parking, 0.5 miles from station, Excellent potential, Energy rating: D



Total area: Approx. 102.2 sq. meters (1,100.0 sq. feet)
External Storage : 1.6 sq. meters (17.2 sq. feet)

James Alexander
1341 London Road,
Norbury, SW16 4BE
020 8629 8028
norburysales@jamesalexander.com

Energy Rating: D We aim to make our particulars both accurate and reliable. However they are not guaranteed; nor do they form part of an offer or contract. If you require clarification on any points then please contact us, especially if you're travelling some distance to view. Please note that appliances and heating systems have not been tested and therefore no warranties can be given as to their good working order.