



Darcy Road, SW16

£550,000 pcm

A three bedroom family home in need of updating, located just 0.7 miles from Norbury station and available chain free. Energy rating: E

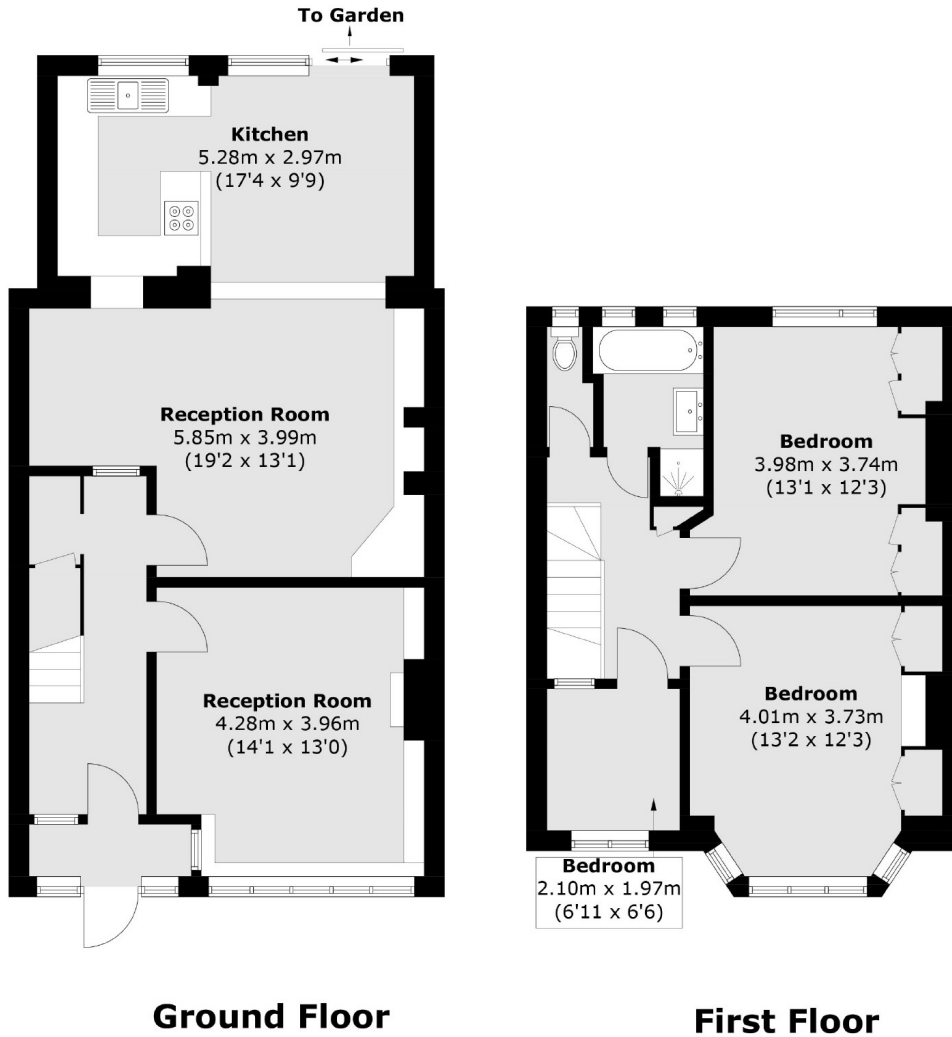


This family home offers three bedrooms to the first floor along with a family bathroom and access to loft space. To the ground floor there is a spacious front reception, rear sitting room which has been open to dining area and extended kitchen/breakfast room opening to the garden.

Darcy Road is conveniently situated just 0.7 miles from Norbury train station and the town centre, which offers a variety of local restaurants and shops. The property also benefits from easy access to local schools, including state and grammar schools, and the open green space of Pollards Hill, making it an ideal location for families.

Family home, Three bedrooms, Extended kitchen, Updating required, Chain free, Energy rating: E





Total area (approx.): 113.0 sq. m (1,216.3 sq. ft)

James Alexander
1341 London Road,
Norbury, SW16 4BE
020 8629 8029
norburylettings@jamesalexander.com

Energy Rating: E We aim to make our particulars both accurate and reliable. However they are not guaranteed; nor do they form part of an offer or contract. If you require clarification on any points then please contact us, especially if you're travelling some distance to view. Please note that appliances and heating systems have not been tested and therefore no warranties can be given as to their good working order.