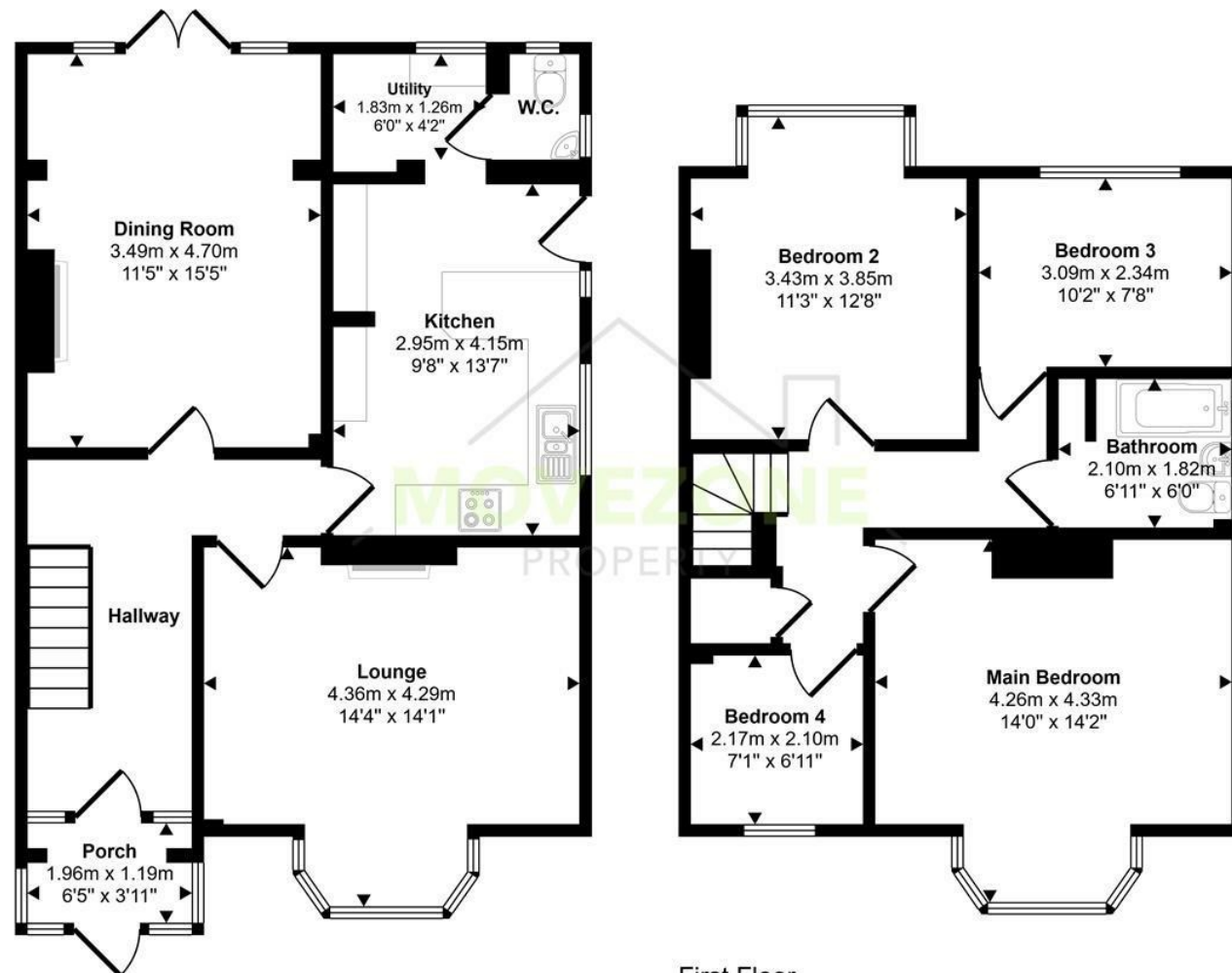




**4 Bed
House
located in**

Approx Gross Internal Area
120 sq m / 1288 sq ft



This floorplan is only for illustrative purposes and is not to scale. Measurements of rooms, doors, windows, and any items are approximate and no responsibility is taken for any error, omission or mis-statement. Icons of items such as bathroom suites are representations only and may not look like the real items. Made with Made Snappy 360.

Directions

Contact

223 Southborough Lane
Bromley
Kent
BR2 8AT

E: info@movezone.co.uk

T: 0208 3139075

<https://www.movezone.co.uk>



10 Selwood Road

Croydon
CR0 7 1D

£2,695 PCM



An exceptional opportunity to rent this spacious four-bedroom unfurnished semi-detached home, ideally located in a highly sought-after residential area of Croydon. Available for a SIX MONTH TENANCY.

The property offers generous living space throughout, featuring a modern fitted kitchen with breakfast bar and separate utility room, two bright reception rooms, and a convenient downstairs WC. Upstairs, the master bedroom is complete with fitted wardrobes, accompanied by three further well-proportioned bedrooms and a family bathroom.

Additional benefits include gas central heating, a large private rear garden, and a driveway providing parking for two cars.

The contingency deposit: £3173.00
EPC Rating: E
Council Tax Rating: E

This property is expected to let quickly, so early viewing is highly recommended.

