



Flat C, N4

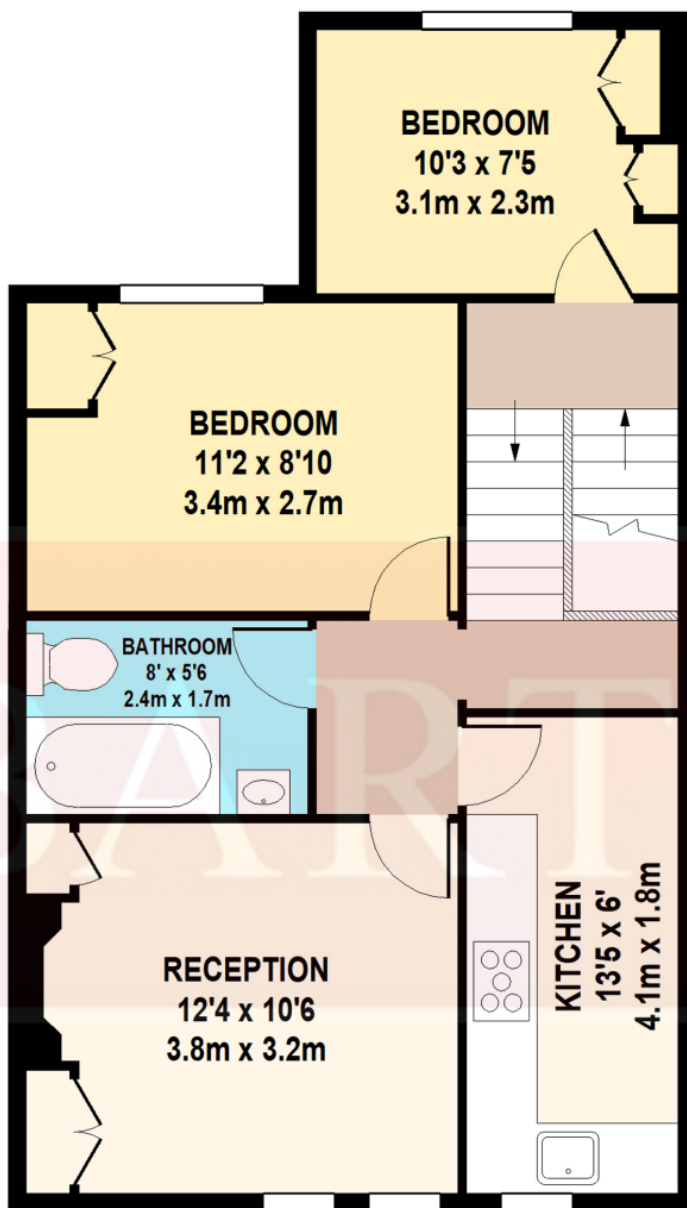
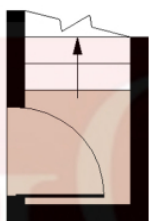
£2,000 pcm

Hobarts are pleased to offer this top-floor, split-level one-bedroom apartment with an additional office room, set within a charming Victorian conversion. The property features a double bedroom, separate office ideal for home working, a good-sized reception room, fitted kitchen and a bathroom with shower. Ideally located in the heart of Stroud Green, moments from local amenities and with excellent transport links, including Finsbury Park Underground and Haringay Overground within easy walking distance.

Hobarts Estate Agents
23 Ferme Park Road, Stroud Green, London, N4 4DS
stroudgreen@hobarts.co.uk
www.hobarts.co.uk
442083429000



- Top-floor, split-level apartment
- Bright reception room
- Bathroom with shower
- Ideal for home working
- Close to Finsbury Park & Haringay stations
- One double bedroom office room
- Separate fitted kitchen
- Victorian conversion
- Prime Stroud Green location



GROUND FLOOR

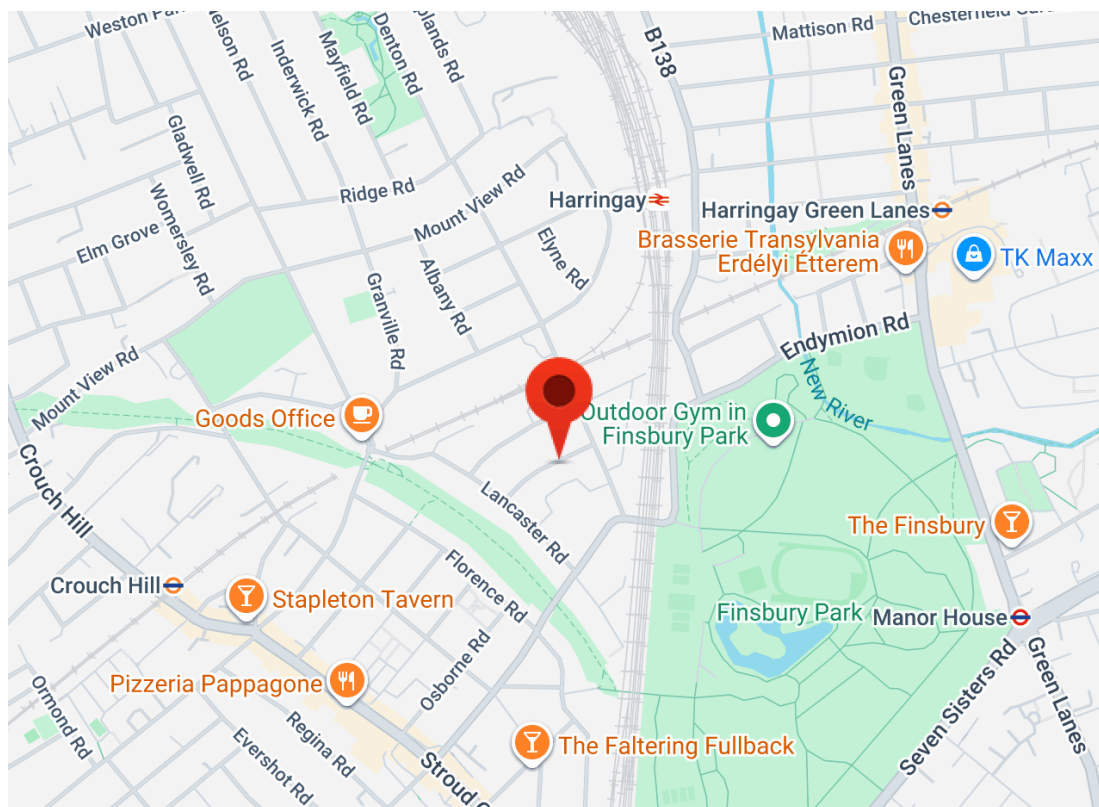
FIRST FLOOR

CORNWALL ROAD
TOTAL APPROX. FLOOR AREA 551 SQ.FT. (51 SQ.M.)

Whilst every attempt has been made to ensure the accuracy of the floor plan contained here, measurements of doors, windows, rooms and any other items are approximate and no responsibility is taken for any error, omission, or mis-statement.

This plan is for illustrative purposes only and should be used as such by any prospective purchaser.

The services, system and appliances shown have not been tested and no guarantee as to their operability or efficiency can be given.



Score	Energy rating	Current	Potential
92+	A		
81-91	B		
69-80	C	70 C	79 C
55-68	D		
39-54	E		
21-38	F		
1-20	G		

Tenure:**Ground rent:****Service Charges:****Local Authority:****Viewings:**

Strictly by appointment via
HOBARTS ESTATE AGENTS
442083429000

Contact:

23 Ferme Park Road, Stroud
Green, London, N4 4DS

stroudgreen@hobarts.co.uk
www.hobarts.co.uk

rightmove

PrimeLocation.com

homes24.co.uk

Zoopla.co.uk

propertyfinder.com



These property details, including measurements, floor plans and items depicted in photographs etc. are intended only as a brief guide to prospective purchasers and are not intended to be relied upon for any purpose whatsoever. Any interested party should satisfy themselves by inspection or otherwise as to the correctness of each statement contained in these details.