

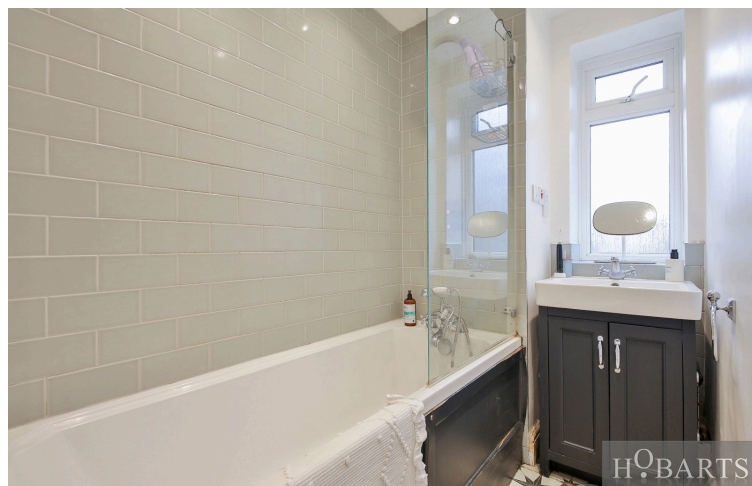
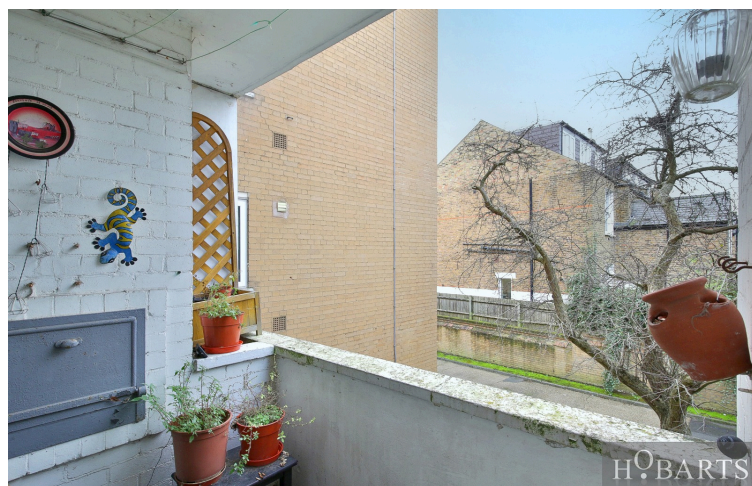


Otway Court, N4

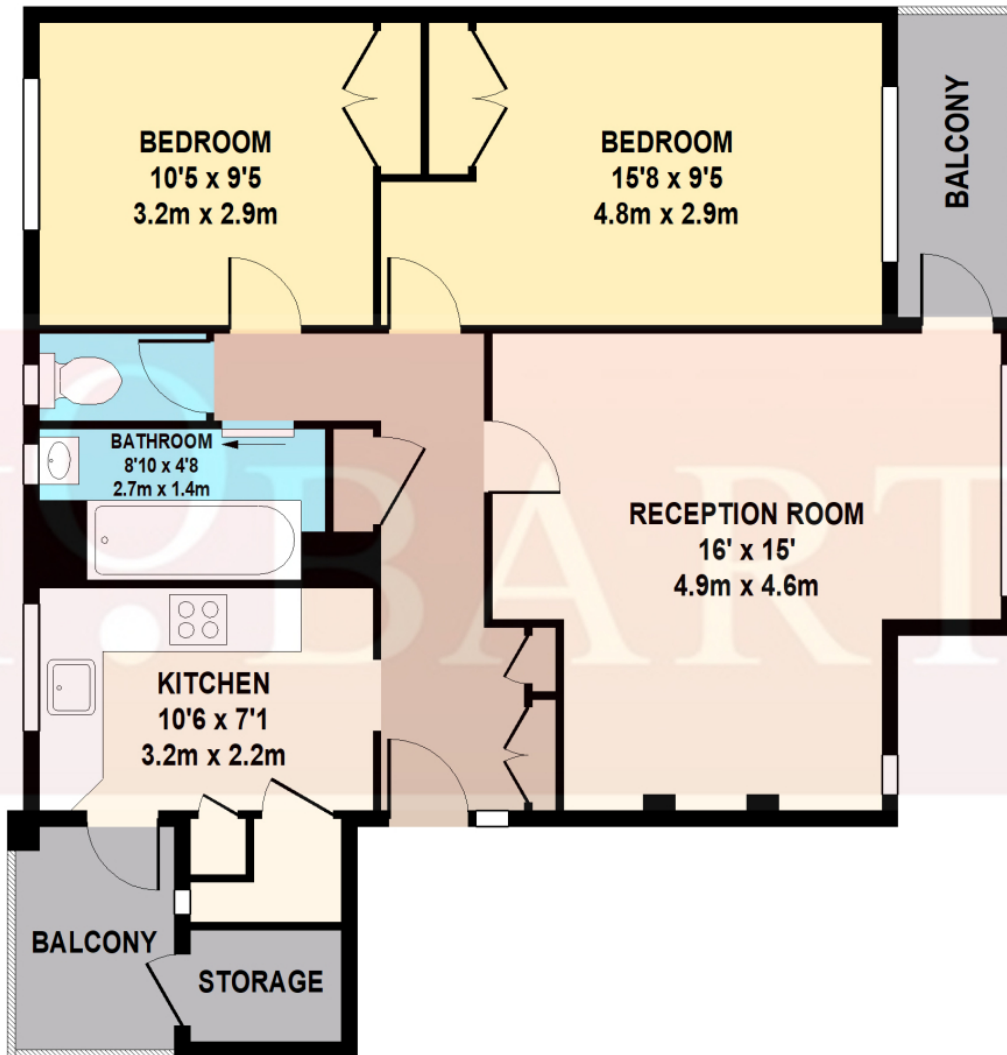
£2,300 pcm

Excellent opportunity to rent this spacious, two double bedroom, first floor purpose built flat. Situated in this conveniently positioned small block on a quiet residential road close to transport, shops and within easy access to Crouch End and Finsbury Park. Features include two balconies with green outlook, well-proportioned room sizes, ample storage, wooden parquet flooring and communal gardens. Sunlight floods in this lovely hill top flat, moments from Haringey BR station with frequent trains into the centre of London (Kings Cross/Old Street) 20 minute walk or bus ride to transport links at Finsbury Park and to Crouch End's vibrant shopping and amenities.

Hobarts Estate Agents
23 Ferme Park Road, Stroud Green, London, N4 4DS
stroudgreen@hobarts.co.uk
www.hobartsproperty.co.uk
442083429000



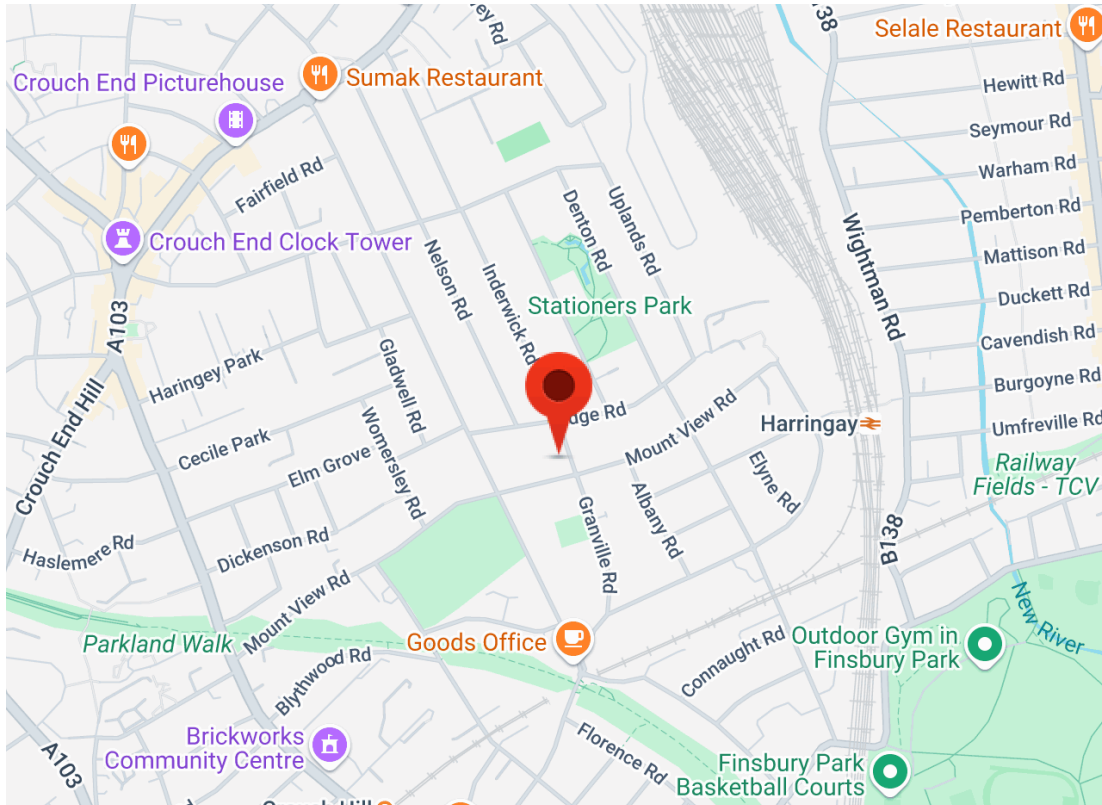
- Two double bedrooms
- Kitchen/diner
- Parquet flooring and double glazing
- Communal garden
- Shopping in Crouch End and Stroud Green close by
- Two balconies with leafy sunny outlooks
- Reception with wood burner
- Bathroom with shower and separate w.c.
- Transport links at Haringey over ground and Finsbury Park tube



1ST FLOOR

OTWAY COURT
TOTAL APPROX. FLOOR AREA 706 SQ.FT. (65.6 SQ.M.)

Whilst every attempt has been made to ensure the accuracy of the floor plan contained here, measurements of doors, windows, rooms and any other items are approximate and no responsibility is taken for any error, omission, or mis-statement. This plan is for illustrative purposes only and should be used as such by any prospective purchaser. The services, system and appliances shown have not been tested and no guarantee as to their operability or efficiency can be given.



Energy Efficiency Rating		Current	Potential
Very energy efficient - lower running costs			
(92+)	A		
(81-91)	B		
(69-80)	C		
(55-68)	D		
(39-54)	E		
(21-38)	F		
(1-20)	G		
Not energy efficient - higher running costs			
England, Scotland & Wales		70	79
EU Directive 2002/91/EC			

Address: Otway Court, N4

Tenure:

Ground rent:

Service Charges:

Local Authority:

Viewings:

Strictly by appointment via
HOBARTS ESTATE AGENTS
442083429000

Contact:

23 Ferme Park Road, Stroud
Green, London, N4 4DS

stroudgreen@hobarts.co.uk
www.hobartsproperty.co.uk

rightmove

PrimeLocation.com

homes24.co.uk

Zoopla.co.uk

propertyfinder.com



These property details, including measurements, floor plans and items depicted in photographs etc. are intended only as a brief guide to prospective purchasers and are not intended to be relied upon for any purpose whatsoever. Any interested party should satisfy themselves by inspection or otherwise as to the correctness of each statement contained in these details.