

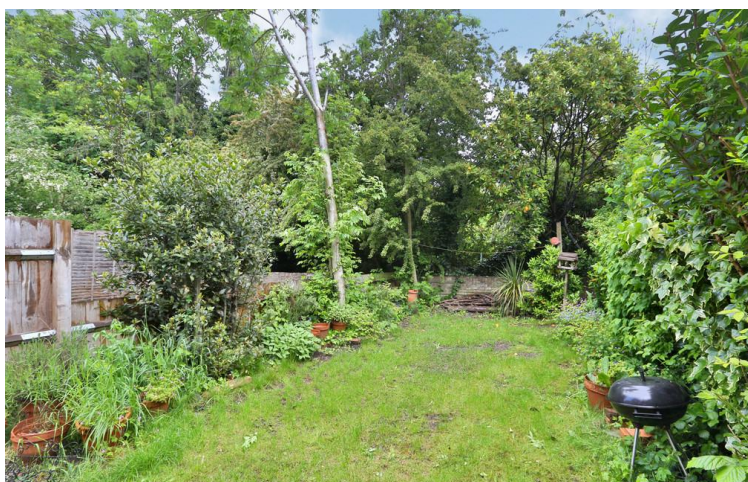


Florence Road, Finsbury Park, London, N4 4DJ

£1,550 pcm

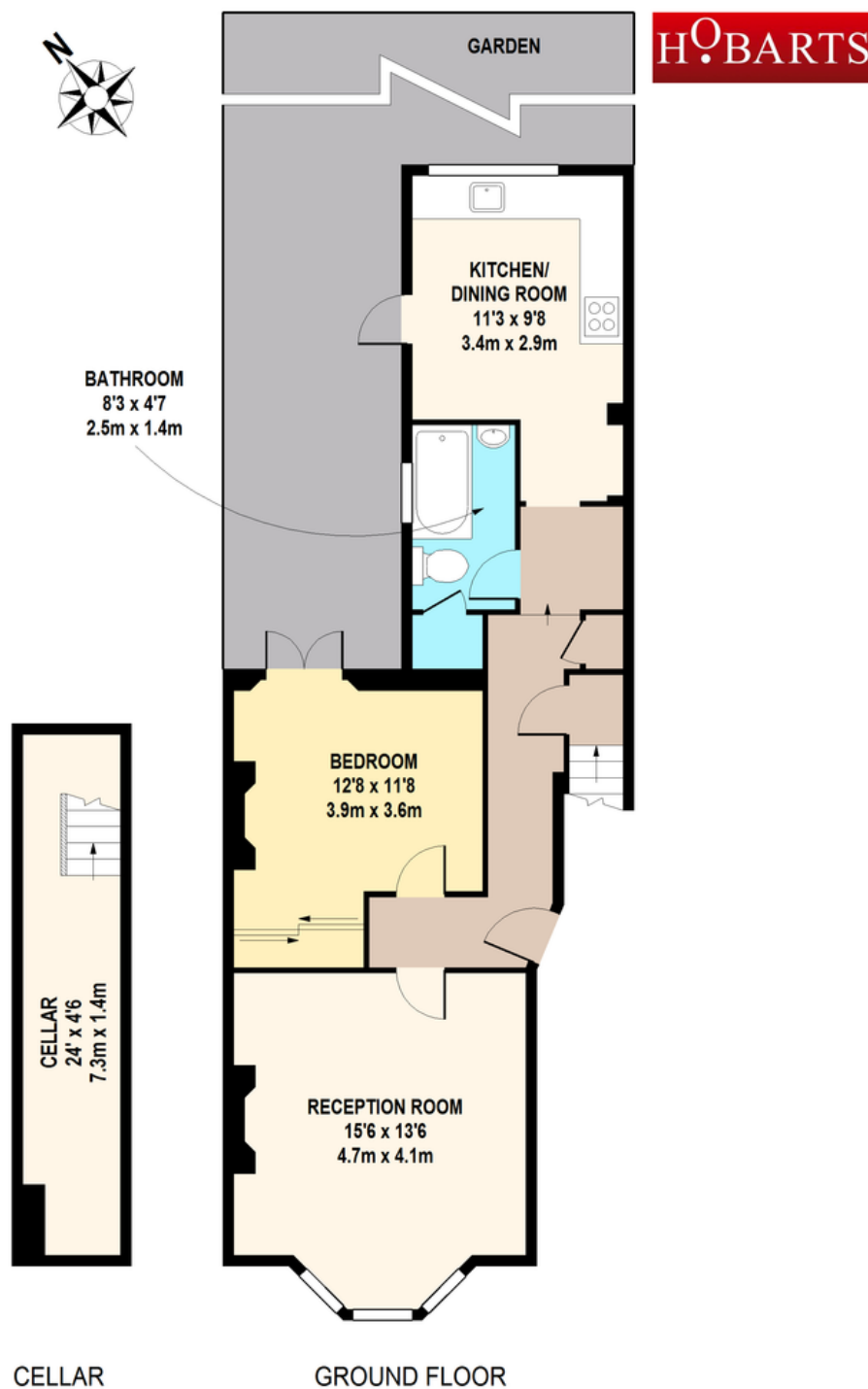
Very spacious one bedroom garden flat on a popular residential road in a period property. The property has been redecorated throughout and comprises of spacious bay fronted reception room, double bedroom with doors to garden, NEW bathroom with shower, cellar for storage and large kitchen diner with access to patio and pretty garden backing on to The Parkland Walk. Available now, furnished/unfurnished.

Early viewing recommended!



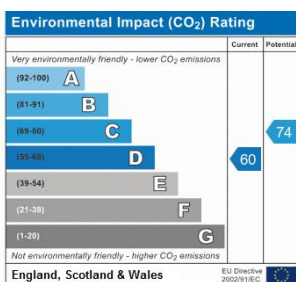
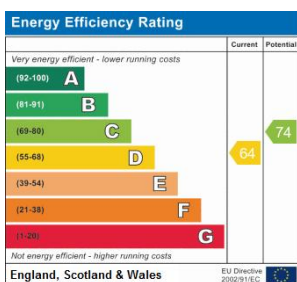
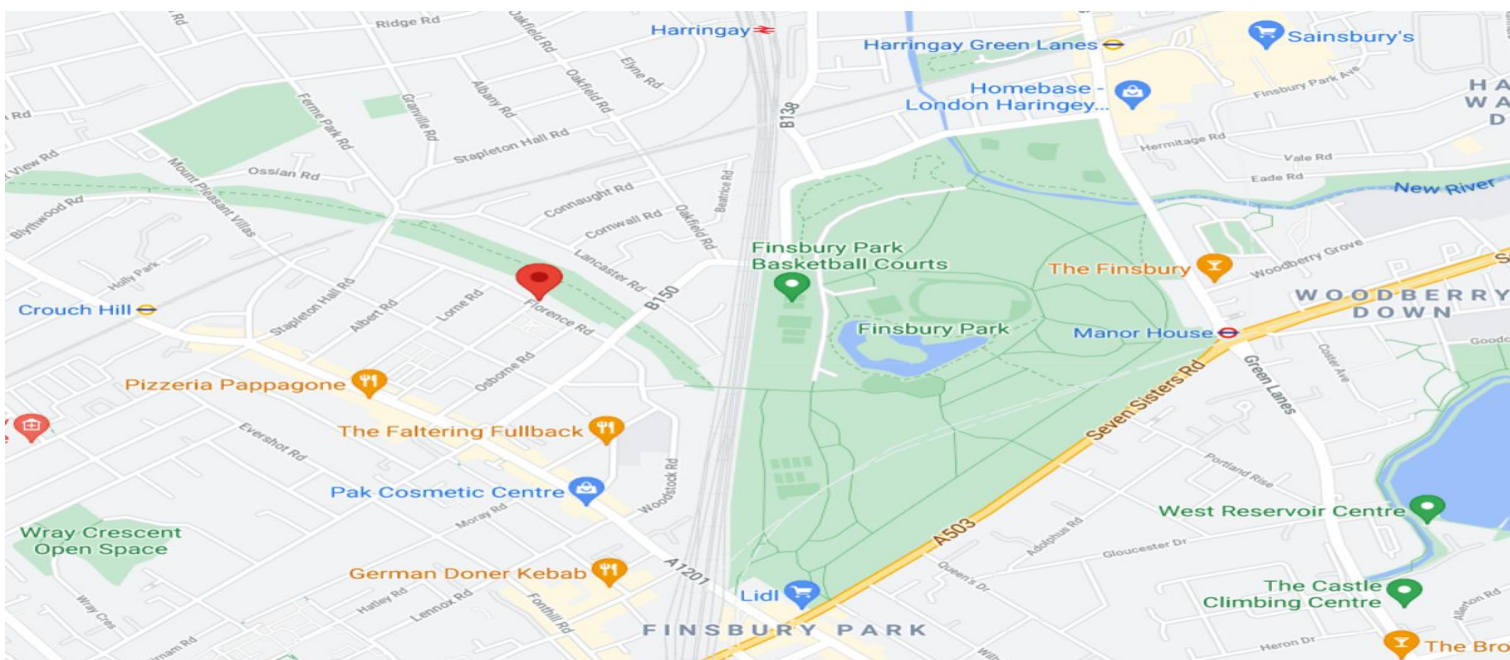
- One double bedroom
- Spacious reception room
- Large kitchen diner
- New bathroom with shower
- Garden with patio

- Cellar
- Backing on to The Parkland Walk
- Stroud green shops and amenities close by
- Transport links at Finsbury Park tube and Crouch Hill over ground train close by
- AVAILABLE NOW



FLORENCE ROAD,
TOTAL APPROX. FLOOR AREA 734 SQ.FT. (68.2 SQ.M.)

Whilst every attempt has been made to ensure the accuracy of the floor plan contained here, measurements of doors, windows, rooms and any other items are approximate and no responsibility is taken for any error, omission, or mis-statement. This plan is for illustrative purposes only and should be used as such by any prospective purchaser. The services, systems and appliances shown have not been tested and no guarantee as to their operability or efficiency can be given



Local Authority:
Haringey London
Borough Council

Viewings:
Strictly by appointment via
HOBARTS ESTATE AGENTS

Contact:
23 Ferme Park Road
N4 4DS

020 8342 9000
stroudgreen@hobarts.co.uk
www.hobarts.co.uk

rightmove

PrimeLocation.com

homes24.co.uk

Zoopla.co.uk

propertyfinder.com

