

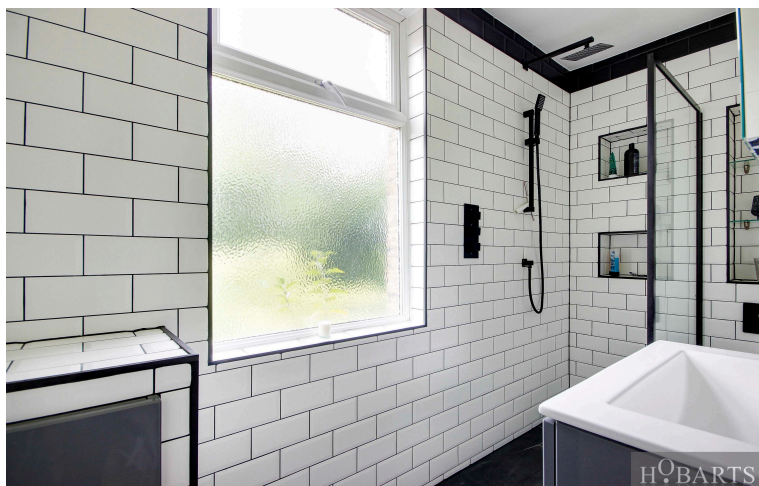
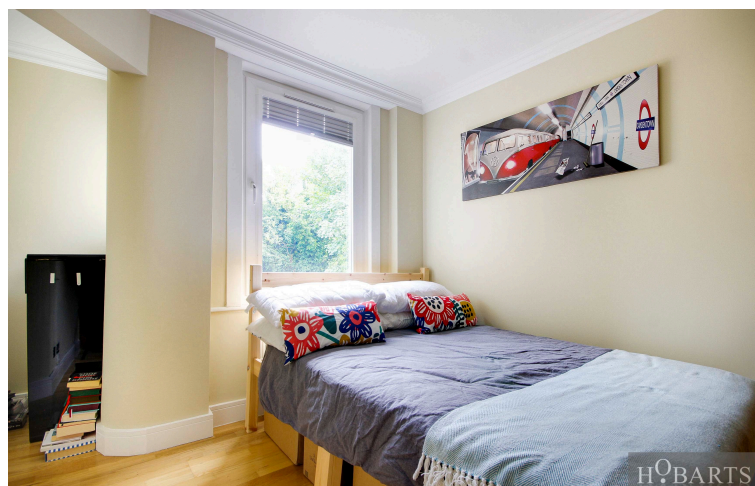
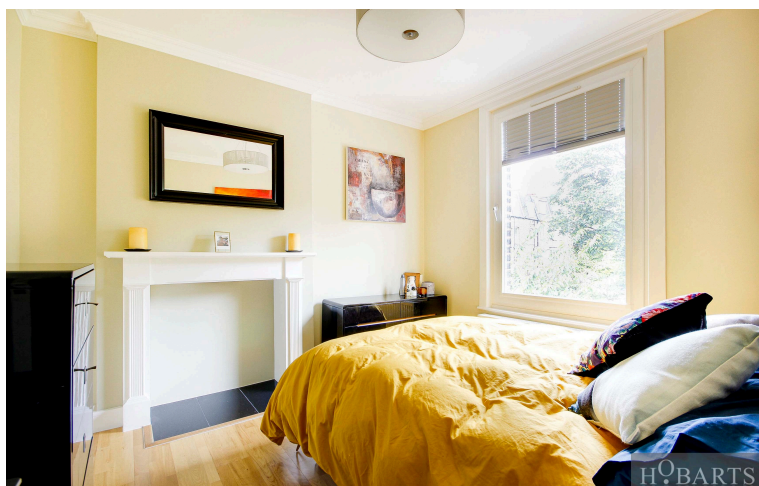


Oakfield Road, Stroud Green, N4 4QH

Asking Price £520,000

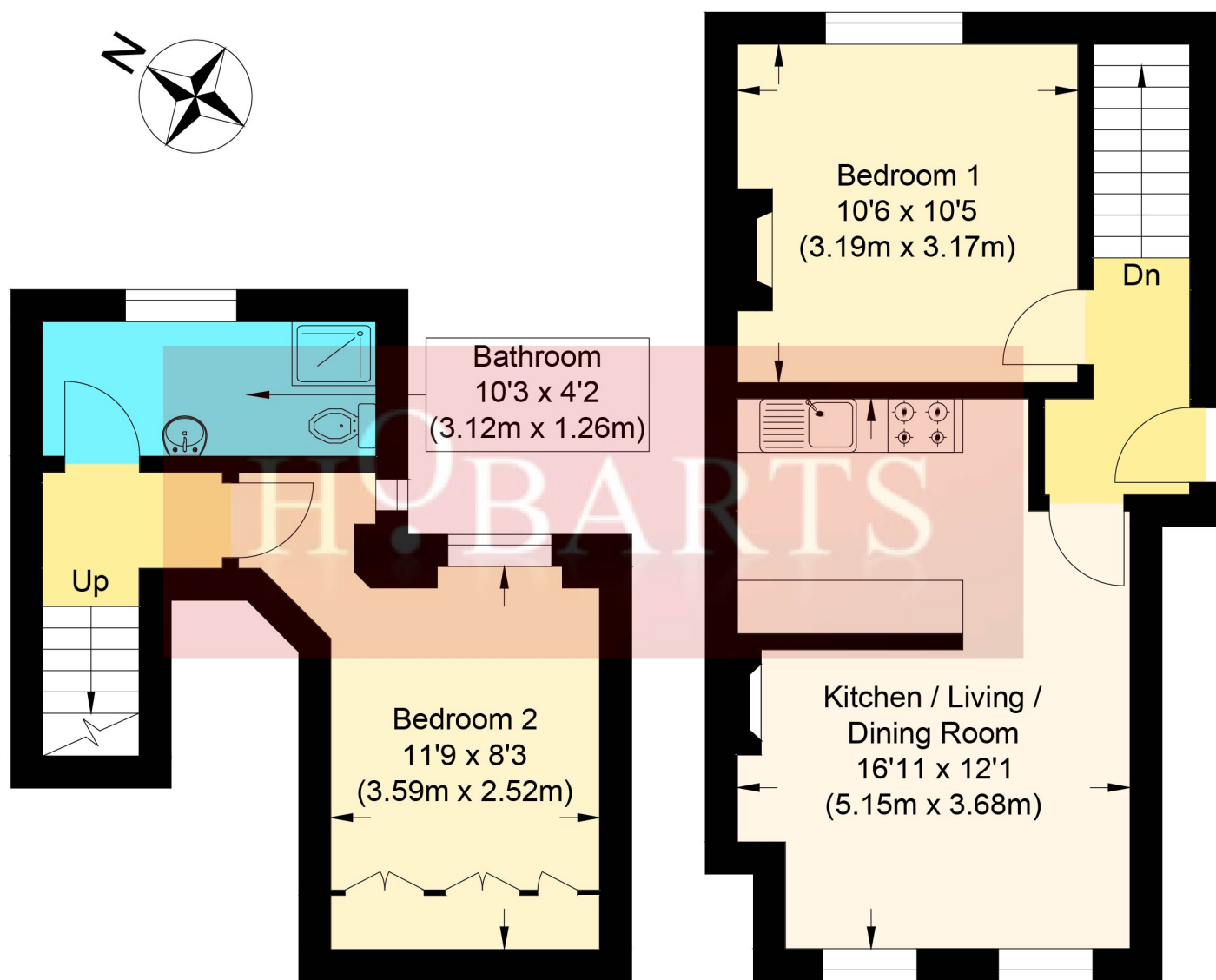
Beautifully presented, this two double bedroom, first-floor flat is set within a charming period house. The property features a fully fitted kitchen open to a bright and inviting reception room, a luxurious modern shower room, and two generously sized double bedrooms. Additional highlights include elegant wooden floors, double-glazed windows, charming fireplaces, inbuilt shutters, and stylish designer wardrobes. Located on one of Stroud Green's premier roads, the flat is just a short stroll from the vibrant Stroud Green Road, with its excellent array of shops, cafes, and restaurants, and superb transport links at Finsbury Park Tube and Haringay Rail Overground. Enjoy nearby green spaces including Finsbury Park and the leafy Parkland Walk, as well as excellent local schools. Offered chain-free and as a share of freehold.

Hobarts Estate Agents
23 Ferme Park Road, Stroud Green, London, N4 4DS
stroudgreen@hobarts.co.uk
www.hobarts.co.uk
442083429000



- Two double bedrooms
- Fully fitted kitchen open to reception
- Wooden floors throughout
- Designer wardrobes
- Chain-free
- Premier Stroud Green road location

- First-floor period flat
- Modern luxury shower room
- Fireplaces and inbuilt shutters
- Double-glazed windows
- Share of freehold
- Close to shops, cafes, Finsbury Park, and transport links



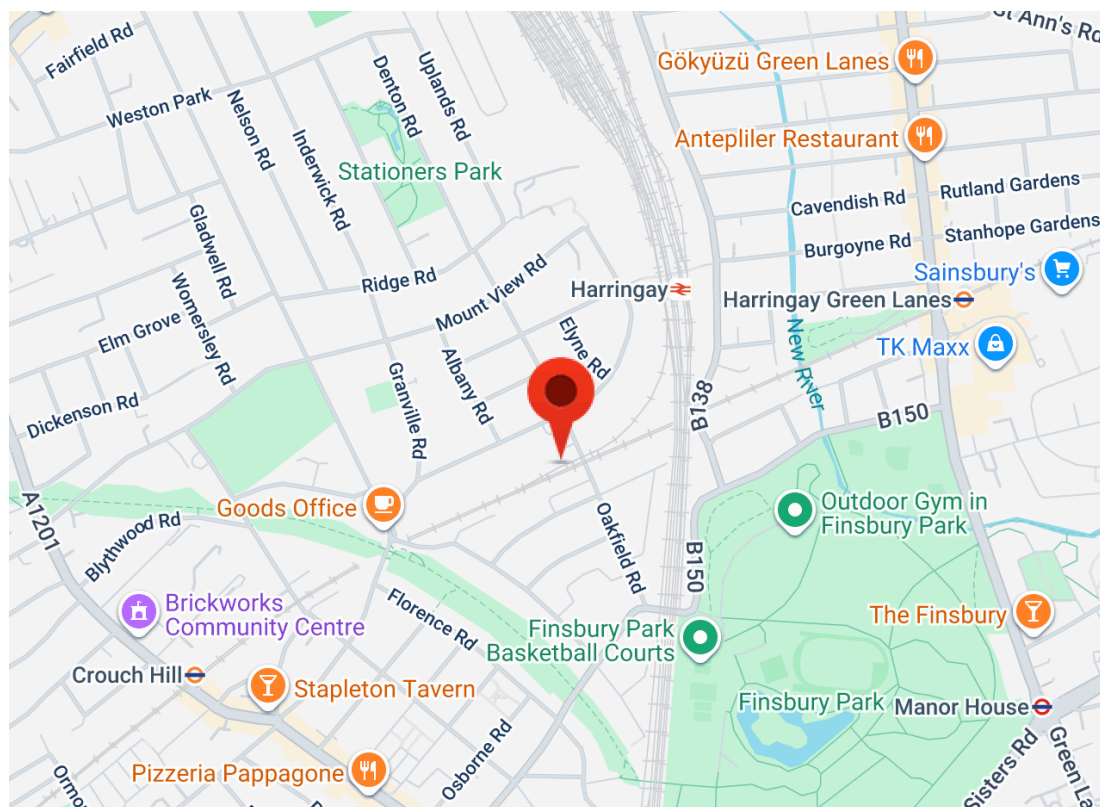
Ground Floor

First Floor

Oakfield Road N4

Approximate Gross Internal Floor Area : 51.10 sq m / 550.03 sq ft

Illustration for identification purposes only, measurements are approximate, not to scale.



Score	Energy rating	Current	Potential
92+	A		
81-91	B		
69-80	C		79 C
55-68	D	68 D	
39-54	E		
21-38	F		
1-20	G		

Tenure:

Share of Freehold

Ground rent:**Service Charges:****Local Authority:****Viewings:**

Strictly by appointment via
HOBARTS ESTATE AGENTS
442083429000

Contact:

23 Ferme Park Road, Stroud
Green, London, N4 4DS

stroudgreen@hobarts.co.uk
www.hobarts.co.uk

rightmove

PrimeLocation.com

homes24.co.uk

Zoopla.co.uk

propertyfinder.com



These property details, including measurements, floor plans and items depicted in photographs etc. are intended only as a brief guide to prospective purchasers and are not intended to be relied upon for any purpose whatsoever. Any interested party should satisfy themselves by inspection or otherwise as to the correctness of each statement contained in these details.