

Stapleton Hall Road, Stroud Green, London N4 4QA

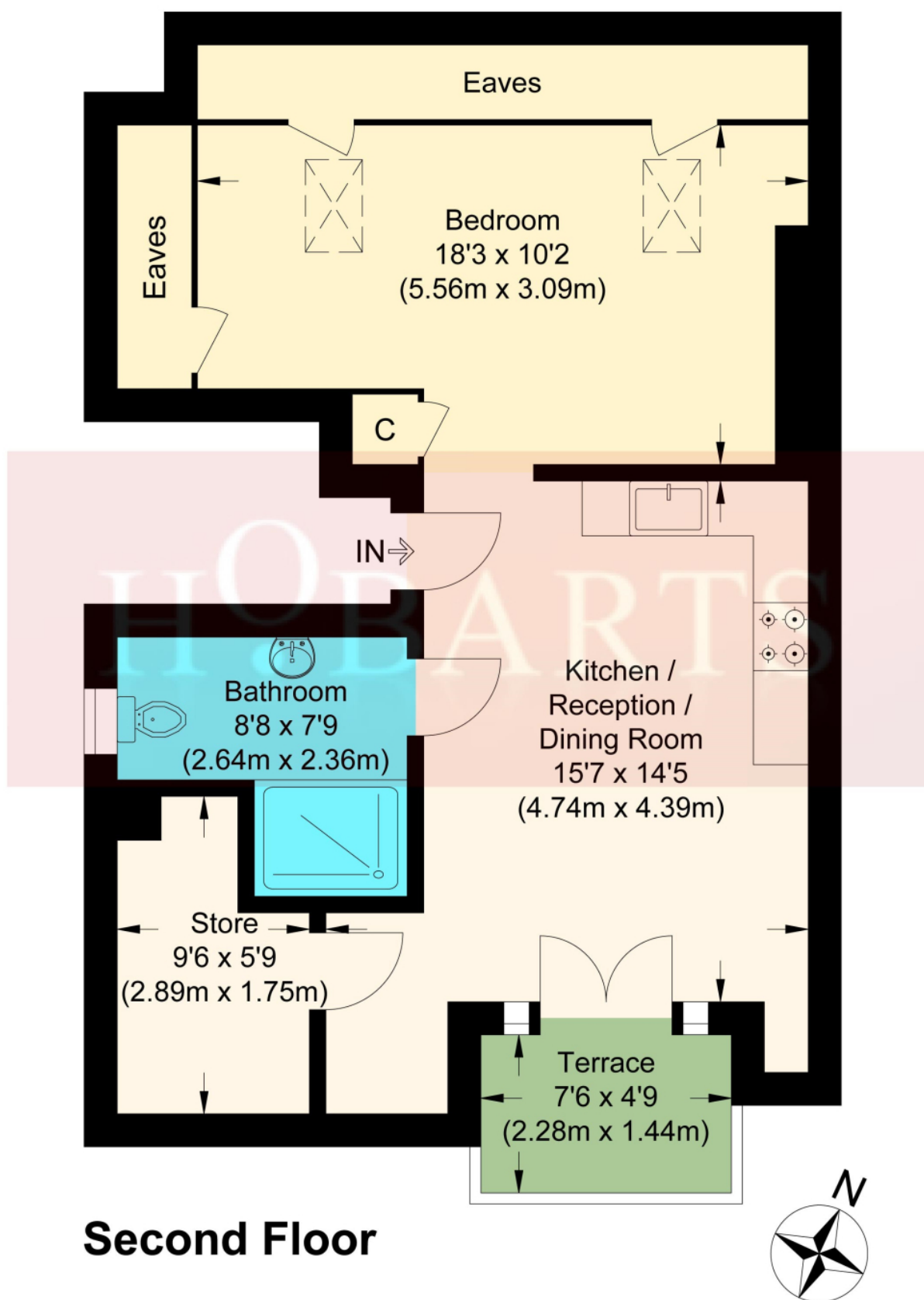
Asking Price £385,000

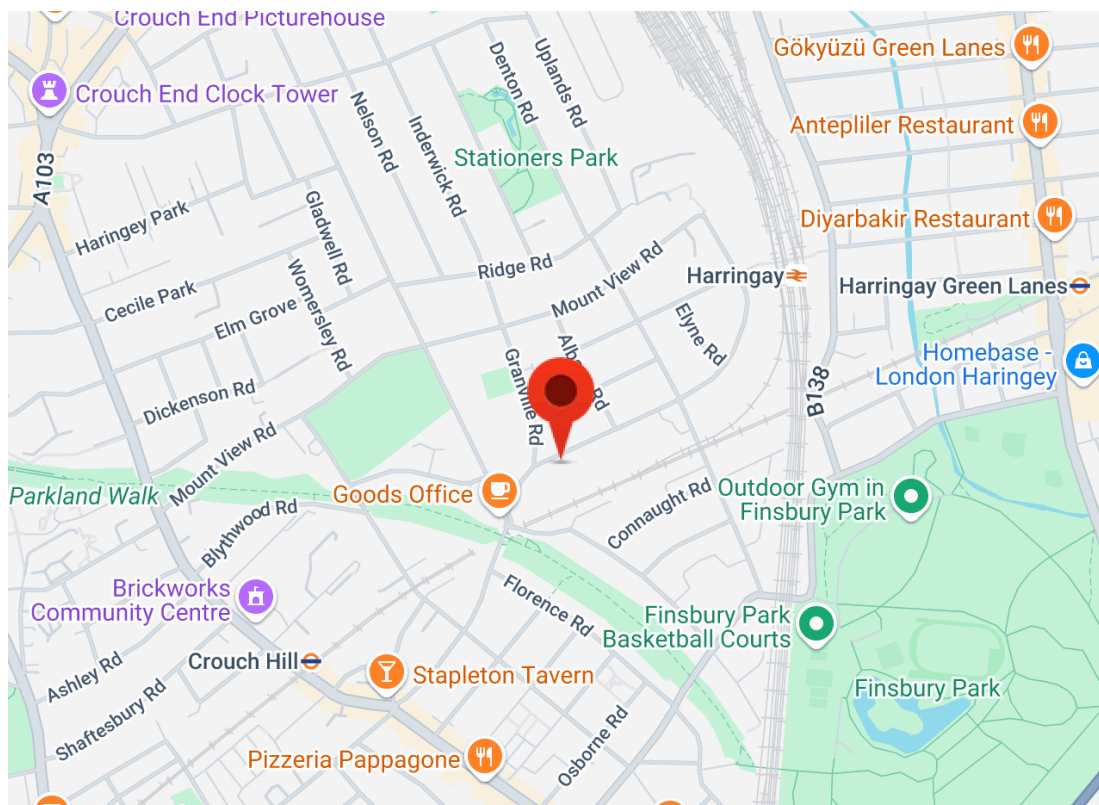
A fantastic top floor studio flat beautifully presented, refurbished from top to bottom to a hi specification. Accommodation includes open plan kitchen/reception with doors to a balcony with great views of the London sky line. Shower room and separate bedroom area. Stapleton Hall Road is conveniently located for good transport connections at Haringey overground and Finsbury Park tube. Array of shops and restaurants in Crouch End, on Stroud Green Road and extensive regeneration at Finsbury Park. The Parkland Walk nature reserve and Finsbury Park are a few minutes away.

Hobarts Estate Agents
23 Ferme Park Road, Stroud Green, London, N4 4DS
stroudgreen@hobarts.co.uk
www.hobartsproperty.co.uk
442083429000



- Top floor studio
- Re furnished through out
- Modern open plan kitchen/reception
- Moments from the open spaces of Finsbury Park
- Balcont with London sky line views
- Top floor of a period conversion
- Storage space
- Near a choice of local shops





Energy Efficiency Rating		
	Current	Potential
Very energy efficient - lower running costs		
(92+) A		
(81-91) B		
(69-80) C	78	78
(55-68) D		
(39-54) E		
(21-38) F		
(1-20) G		
Not energy efficient - higher running costs		
England, Scotland & Wales		
EU Directive 2002/91/EC		

Address: 118 Stapleton Hall Road, N4

Tenure:
Leasehold

Ground rent:

Service Charges:

Local Authority:

Viewings:

Strictly by appointment via
HOBARTS ESTATE AGENTS
442083429000

Contact:

23 Ferme Park Road, Stroud
Green, London, N4 4DS

stroudgreen@hobarts.co.uk
www.hobartsproperty.co.uk

rightmove

PrimeLocation.com

homes24.co.uk

Zoopla.co.uk

propertyfinder.com



These property details, including measurements, floor plans and items depicted in photographs etc. are intended only as a brief guide to prospective purchasers and are not intended to be relied upon for any purpose whatsoever. Any interested party should satisfy themselves by inspection or otherwise as to the correctness of each statement contained in these details.