



Biggerstaff Street, Finsbury Park, N4 3FH

Asking Price £415,000

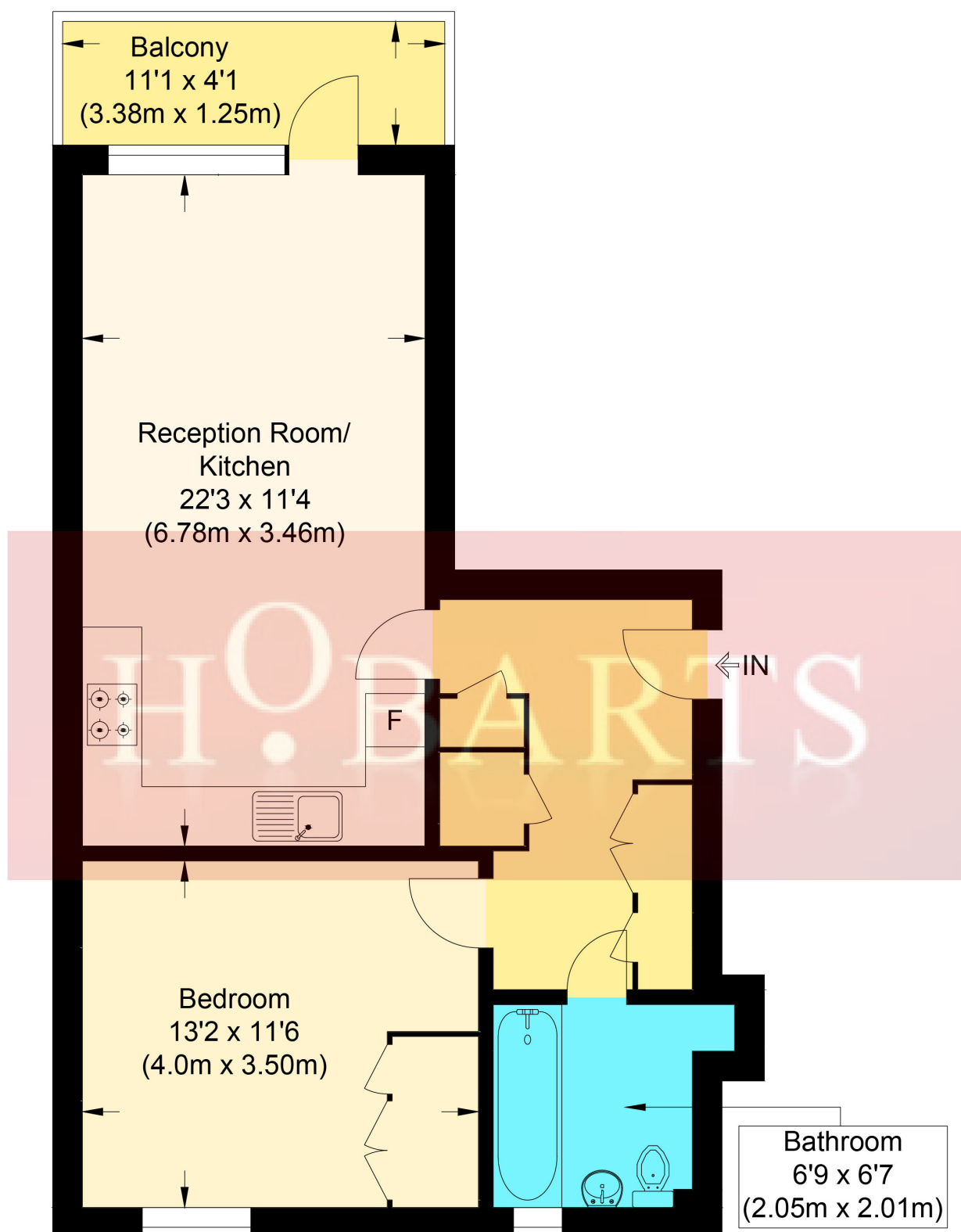
Nestled within a sought-after modern development, this elegant one-bedroom luxury apartment offers a perfect blend of style and convenience. Just a short stroll from Finsbury Park's exceptional transport links and vibrant shopping amenities, the property boasts a thoughtfully designed open-plan living space, a sleek contemporary kitchen complete with an integrated dishwasher, and a private balcony ideal for relaxing or entertaining. Additional highlights include a modern bathroom with a shower, secure bike storage, and access to an exclusive gated communal outdoor area. With the added advantage of being offered chain-free, this apartment is an excellent choice for discerning buyers. Early viewing is strongly recommended to secure this outstanding home.

Hobarts Estate Agents  
23 Ferme Park Road, Stroud Green, London, N4 4DS  
stroudgreen@hobarts.co.uk  
www.hobartsproperty.co.uk  
442083429000





- Modern new build
- Fully fitted kitchen
- Balcony off reception room
- Bike shed
- Finsbury Park transport hub minutes away
- One double bedroom
- Open plan kitchen reception room
- Modern bathroom with shower
- Communal gated outdoor space
- Shopping and amenities of Finsbury Park and Holloway close by



## Maplefield

Approximate Gross Internal Floor Area : 52.90 sq m / 569.41 sq ft

Illustration for identification purposes only, measurements are approximate, not to scale.





Score	Energy rating	Current	Potential
92+	<b>A</b>		
81-91	<b>B</b>	82 B	82 B
69-80	<b>C</b>		
55-68	<b>D</b>		
39-54	<b>E</b>		
21-38	<b>F</b>		
1-20	<b>G</b>		

**Tenure:**

Leasehold

**Ground rent:****Service Charges:****Local Authority:****Viewings:**

Strictly by appointment via  
HOBARTS ESTATE AGENTS  
442083429000

**Contact:**

23 Ferme Park Road, Stroud  
Green, London, N4 4DS

stroudgreen@hobarts.co.uk  
www.hobartsproperty.co.uk

rightmove

PrimeLocation.com

homes24.co.uk

Zoopla.co.uk

propertyfinder.com



These property details, including measurements, floor plans and items depicted in photographs etc. are intended only as a brief guide to prospective purchasers and are not intended to be relied upon for any purpose whatsoever. Any interested party should satisfy themselves by inspection or otherwise as to the correctness of each statement contained in these details.