



SUNROCK
RESIDENCES

Imagine a place where the beauty
of tranquillity seamlessly blends
with the elegance of modern
living – a place where every day
feels like a retreat.

Welcome to Sunrock Residences, an
exclusive and sophisticated complex
featuring 46 luxurious apartments and
penthouses in the suburban area of
Germasogeia. Sunrock is designed for
those who seek the ultimate in comfort,
convenience, and security, offering a
perfect balance between the sea and
the mountains for a serene and tranquil
lifestyle.



SUNROCK
RESIDENCES

A PROJECT BY
BLUE REEF DEVELOPMENTS

www.sunrockresidences.com



GREAT LIVING
REIMAGINED



Sunrock Residences exists in perfect harmony with its surroundings, blending architecture, amenities, location, community, culture and the natural world into one unified element – a source of refined living and great pleasure.



Known for its stunning beaches, vibrant nightlife, high-class shopping, and rich cultural heritage, Limassol is a magnet for those seeking the best of all worlds.



Germasogeia is a unique location that offers residents a peaceful, suburban escape that is still just minutes from the city. A world away, yet incredibly connected.



Limassol Beach Front

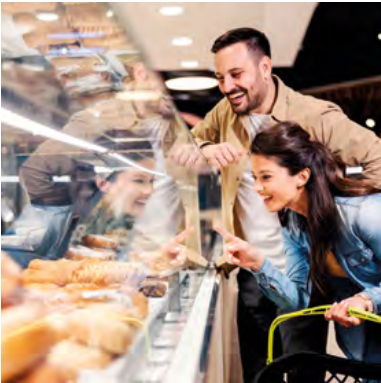


Germasogeia Dam just 8 min drive from Sunrock Residences



A GREAT BALANCE
BETWEEN THE SEA
& MOUNTAINS FOR
CALM LIVING

Everyday amenities nearby



Enjoy local cuisine at nearby tavernas





Sunrock Residences offers a lifestyle unlike anything found in the area, striking a perfect harmony between the coastal attractions, the vibrant local community, and the serenity of the wider natural countryside. Germasogeia is an upmarket residential neighbourhood, and Sunrock Residences rests on a quiet hillside that enjoys a relaxed suburban atmosphere while seamlessly connecting to an urban pulse in which convenience mixes comfortably with character and tradition.

Just moments away from not only many beaches, hotels and restaurants, but also the down-town central business district, Germasogeia unfolds as a charming suburb of both contemporary and traditional architecture with the best of Limassol's leisure and recreation establishments at its door.

Short Distance

- | | |
|------------------------|--------|
| 1. Kindergarden | 2 mins |
| 2. Kiosk | 3 mins |
| 3. Municipality Office | 3 mins |
| 4. Market | 5 mins |
| 5. Restaurants | 5 mins |
| 6. Soccer Field | 5 min |
| 7. Pharmacy | 5 mins |
| 8. Bakery | 5 mins |
| 9. Bank | 5 mins |
| 10. Elementary School | 7 mins |
| 11. Barber & Salon | 7 mins |
| 12. Vets | 7 mins |
| 13. Mini Footbal Field | 7 mins |
| 14. Flower Store | 7 mins |

In The City

- | | |
|-------------------------|---------|
| 15. Beach | 9 mins |
| 16. Supermarket | 9 mins |
| 17. Restaurants & Cafes | 9 mins |
| 18. Hotels & Spa | 9 mins |
| 19. Services | 10 mins |
| 20. Bank | 10 mins |
| 21. Local Schools | 10 mins |
| 22. City Centre | 18 mins |
| 23. Limassol Castle | 20 mins |
| 24. Old Shopping Area | 20 mins |
| 25. Limassol Marina | 21 mins |
| 26. Limassol Port | 25 mins |
| 27. Limassol Mall | 25 mins |
| 28. Casino | 25 mins |

To International Schools

- | | |
|-------------------------|---------|
| 29. Foley's School | 5 mins |
| 30. The Grammar School | 12 mins |
| 31. Oscar International | 15 mins |
| 32. Pascal School | 15 mins |
| 33. American Academy | 20 mins |
| 34. Heritage | 25 mins |
| 35. The Island School | 25 mins |
| 36. Trinity School | 30 mins |

Out Of Limassol

- | | |
|-----------------|---------|
| Nicosia | 45 mins |
| Larnaka | 35 mins |
| Larnaka Airport | 35 mins |
| Protaras | 90 mins |
| Paphos | 45 mins |
| Paphos Airport | 35 mins |
| Platres | 40 mins |
| Troodos | 50 mins |





WE HAVE CREATED A MATURE HAVEN
OF DIVERSE ARCHITECTURE WITH
SPACES THAT BOOST WELLBEING
AND IMPROVE LIFE





LIVING AMIDST GREEN SPACES BOOSTS YOUR WELLBEING AND IMPROVES YOUR LIFE



Events Area



BBQ Area

Fire Pit



THE AMENITIES

Featuring distinct spaces and moods for engaging or unplugging, with thoughtful touches and an emphasis on personal wellness, the green, open and social amenities at Sunrock Residences reflect the ethos of calm living – a balance of gathering, connecting, relaxing and escaping. And you're never far from perhaps the best amenity of all – the incredible swimming pool with its ever-present restful views.







Children's Pool & Swimming Pool



Covered Pergola Areas



Large Scale Chess Area



Children's Playground



Relaxation Corner



Cinema Area



Apartment Building Entrances



EVERYTHING YOU NEED TO STAY IN SHAPE AND KEEP HEALTHY

Enjoy your own private facilities where fitness, health, and luxury converge into perfection.

- SAUNA
- STEAM ROOM
- INDOOR POOL
- JACUZZI
- MASSAGE ROOM
- PILATES & GYM AREA
- CHANGING ROOMS
- EXTERIOR YOGA AREA



Reception



External Yoga Area



Gated Secured Parking

Gated Side Entrance



Rear Side



Rear Access

Guest Parking



CONVENIENCE AND SAFETY

Experience peace of mind and effortless convenience at our thoughtfully designed complex, where safety and accessibility are prioritised. Fully enclosed and gated, the complex features secure parking for residents, guest parking, and multiple access points, including gated side and rear entries, for ultimate ease. With charging stations for electric vehicles and a family-friendly environment, every detail has been crafted to ensure comfort, safety, and practicality for you and your loved ones.





BEAUTIFUL APARTMENTS EMBRACED BY SUNLIGHT & PANORAMAS

A new vision and a new benchmark is set. Combining the most sought-after elements of luxury urban living, Sunrock Residences sets the bar higher than ever before.



2 BEDROOM APARTMENTS

Enjoy a welcoming, free-spirited vibe in a space that encourages total relaxation and sociable togetherness within your home. Life here effortlessly adapts to any mood, occasion or season

Living Room





Open Plan Kitchens

A design focal point where families can congregate and gourmet meals be prepared. Sleek, clean lines, well-planned workspaces and practical functionality define the beauty of our fully equipped apartment kitchens.



Bathrooms

Immerse yourself in your sumptuous bathroom, where every curve, texture, and finish is a testament to your style. Whether you envision yours as a contemporary haven or a timeless retreat, your dreams will become reality.



Bedrooms

When it's time to relax, this is where you'll want to be. Spacious, light-filled and with plenty of storage, the fitted bedrooms provide the ideal opportunity for you to look good and feel good.

3 BEDROOM APARTMENTS

Our sophisticated 3-bedroom apartments redefine family living and entertaining. Featuring expansive interiors and thoughtfully designed layouts, these homes provide the ideal blend of space and elegance. Each unit boasts a private veranda or a lush roof garden, offering panoramic views of the city and sea, and some enjoy serene mountain scenery. Smart home features further enhance the modern living experience, making these apartments a perfect choice for comfort and practicality.



Living Room





Open Plan Kitchen

The perfect blend of practical and playful, these stunning kitchens bring versatility to the hub of the home. They offer a great area to entertain, but at the same time provide an everyday space for the family to get together. Here is where your culinary creativity will come to life.



Bedrooms

The stresses of modern life and fast-paced lifestyles are at an all-time high. So now is the time to embrace relaxing interior styling that presents a much-sought-after sense of calm. Having a bedroom that has an expensive feel, with a neutral palette and luxurious fittings, is perfect for helping to relax and quieten your mind.

Bathrooms

Bathrooms are more than where you start and end your days; they are also a place for you to relax, refresh, and renew. That's because people enjoy a hot bath or a cool shower with the perfect pressure and temperature. If you've had a particularly stressful day, a bubble bath and a glass of wine can do wonders for your mood. Here is your perfect place.





4 BEDROOM APARTMENTS

Indulge in the pinnacle of luxury with our exclusive 4-bedroom apartments. Perfect for larger families or those desiring expansive living spaces, these residences feature exquisite interiors and premium finishes. Each apartment is complemented by a spacious veranda or a luxurious roof garden, providing breathtaking views of the city, sea, and, in select units, the tranquil mountains. Thoughtful additions, like smart home technology, add an extra layer of convenience to these sophisticated homes.

Living Room





Open Plan Kitchens

Proving that modern luxurious kitchens can be simultaneously streamlined and inviting, our kitchen layouts provide the perfect place for creating memorable meals, whilst at the same time they encourage gathering and socialising. Characterised by stunning finishes and materials, these light-filled spaces reflect a very modern approach to living.



Bathrooms

Finished with the natural textures of fine ceramics and highlight timbers, bathrooms present the perfect combination of comfort and design. No detail has been overlooked, and every contemporary convenience is integrated, resulting in bathrooms that are welcoming and inviting.



Bedrooms

Probably the most intimate rooms in the apartment. Spacious, light-filled, and with fitted cupboards, these bedrooms are a blank canvas for you to decorate according to your taste, so that they can be as individual as you are. Sleep soundly in a wonderful dreamy environment, and wake refreshed ready for the new day.



W.C.

APARTMENT ROOF GARDENS

Selected apartments have roof gardens that offer breathtaking city and sea views that create the perfect backdrop for relaxation and entertainment. Thoughtfully designed for every occasion, these exclusive spaces feature a fully equipped kitchen, BBQ area, cosy fire pit, lounge area, convenient storage, and a dedicated W.C. Combining style and practicality, the roof gardens are private retreats that redefine outdoor living.

Hallway & Storage



ROOF GARDEN FEATURES

- KITCHEN
- BBQ
- FIRE PIT
- LOUNGE AREA
- STORAGE
- W.C.



MASTER PLAN



1. BBQ & Multi Use Area
2. Underground Parking Entrance
3. Fire pit
4. Chess Area
5. Social Area
6. Kids Swimming Pool
7. In-Pool Loungers
8. Swimming Pool
9. Refuse
10. Yoga Area
11. Cinema Area
12. Sitting Area
13. Indoor Pool
14. Jacuzzi
15. Hammam
16. Sauna
17. Changing Room
18. Office
19. Massage Room
20. Pilates & Gym area
21. Kids Zone
22. Relax Area
23. External Guest Parking
24. Guest Parking with Charging Station
25. Mini Garden



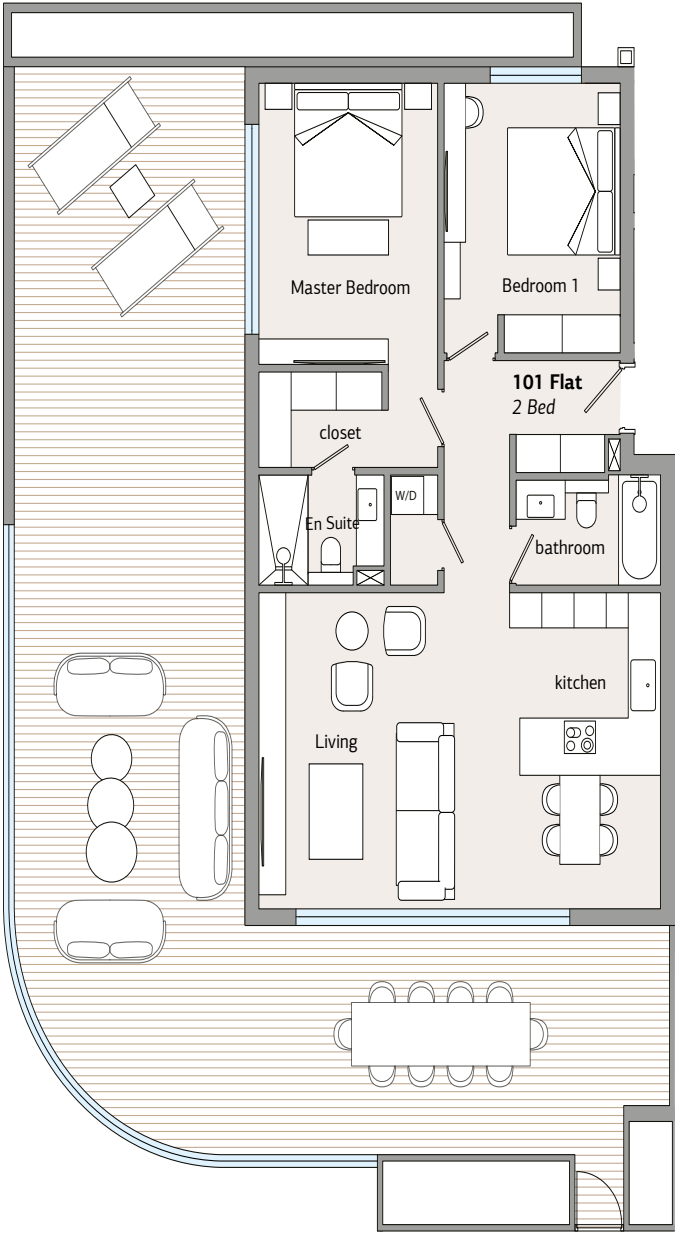






TWO BEDROOM
APT. PLANS

BLOCK A
1 | Flat 101

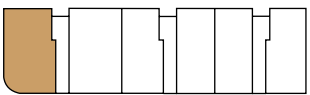


FLAT: 101

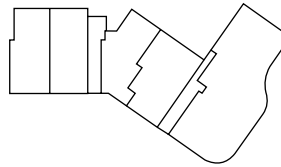
Bedrooms: 2
Bathrooms: 2
Area: 100m²
Covered Veranda: 55m²
Uncovered Veranda: 50m²
Total Area: 155m²
Parking: 1
Storage: 2.8m²



Mountain View



Sea View



BLOCK & APARTMENT LOCATION

BLOCK B

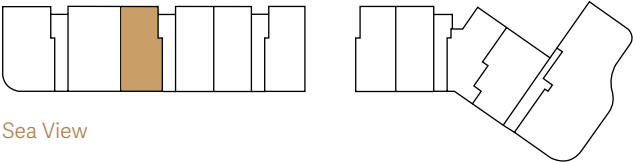
1 | Flat 103

FLAT: 103

Bedrooms: 2
Bathrooms: 2
Area: 101m2
Covered Veranda: 23m2
Uncovered Veranda: 3m2
Total Area: 124m2
Parking: 1
Storage: 2.8m2

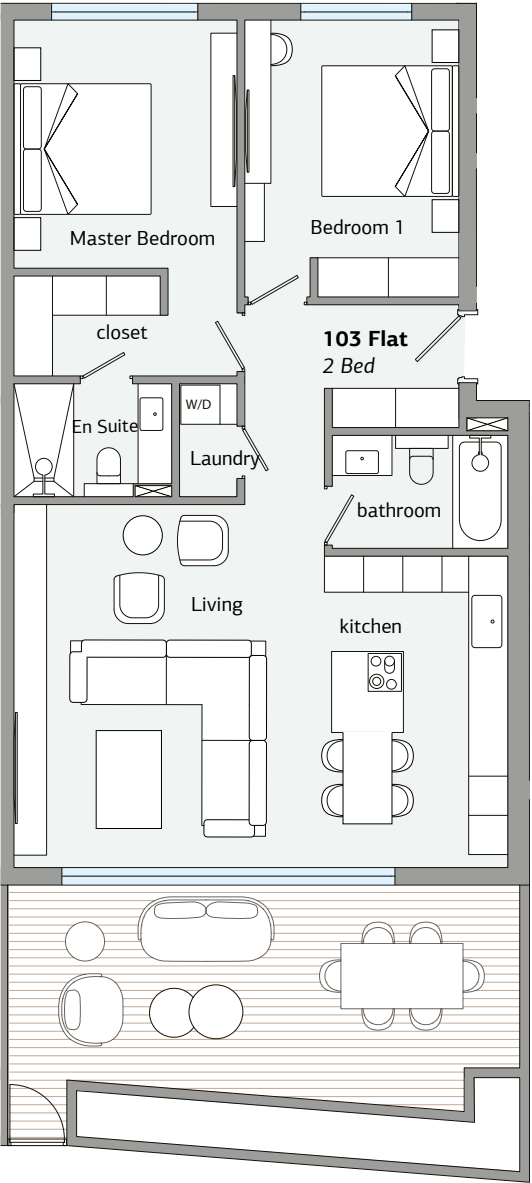


Mountain View



Sea View

BLOCK & APARTMENT LOCATION



BLOCK E

1 | Flat 108-109

FLAT: 108

Bedrooms: 2
Bathrooms: 2
Area: 96m2
Covered Veranda: 22m2
Uncovered Veranda: 4m2
Total Area: 118m2
Parking: 1
Storage: 2.8m2

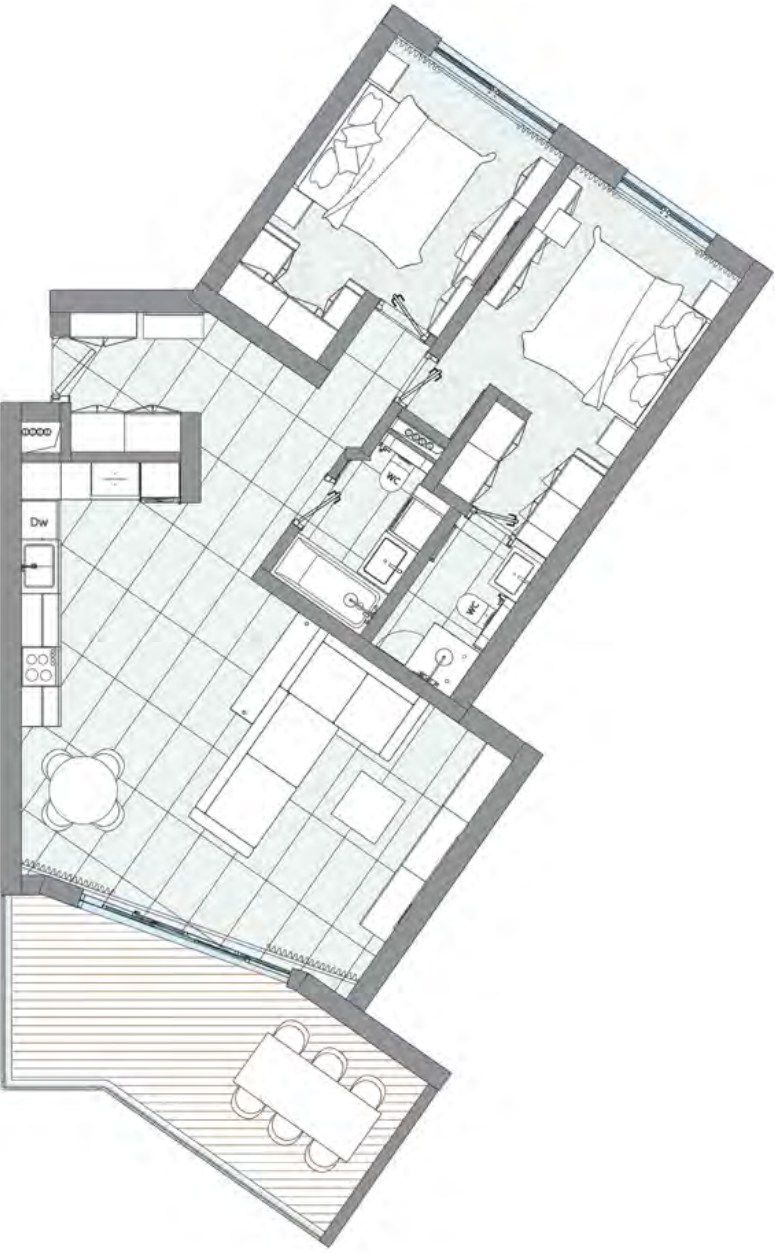
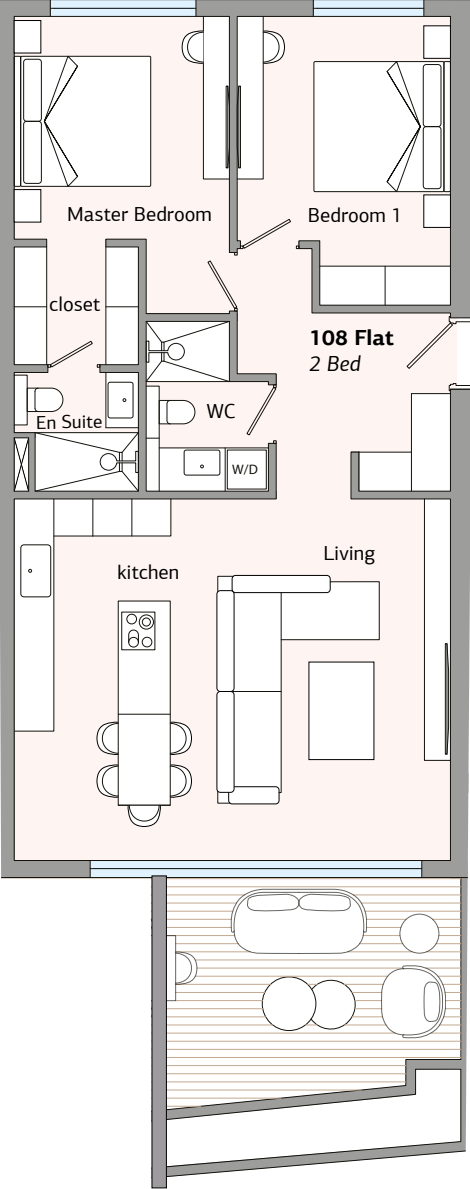
FLAT: 109

Bedrooms: 2
Bathrooms: 2
Area: 99m2
Covered Veranda: 17m2
Uncovered Veranda: 5m2
Total Area: 116m2
Parking: 1
Storage: 2.8m2



Sea View

BLOCK & APARTMENT LOCATION

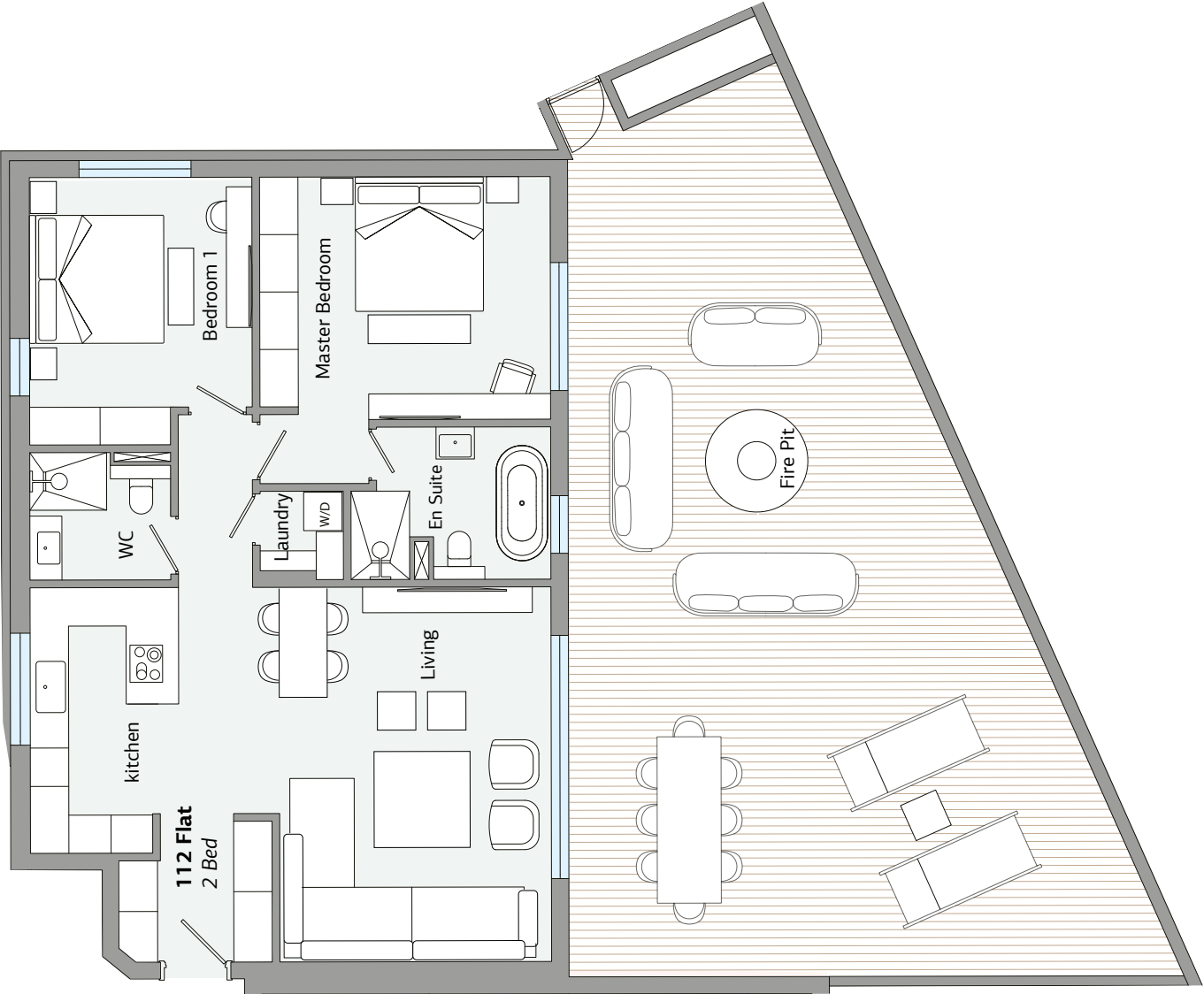


BLOCK F

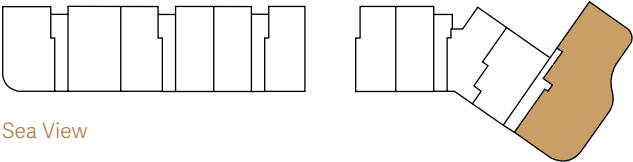
1 | Flat 112

FLAT: 112

Bedrooms: 2
Bathrooms: 2
Area: 107m2
Covered Veranda: 41m2
Uncovered Veranda: 45m2
Total Area: 148m2
Parking: 1
Storage: 2.8m2



Mountain View



Sea View

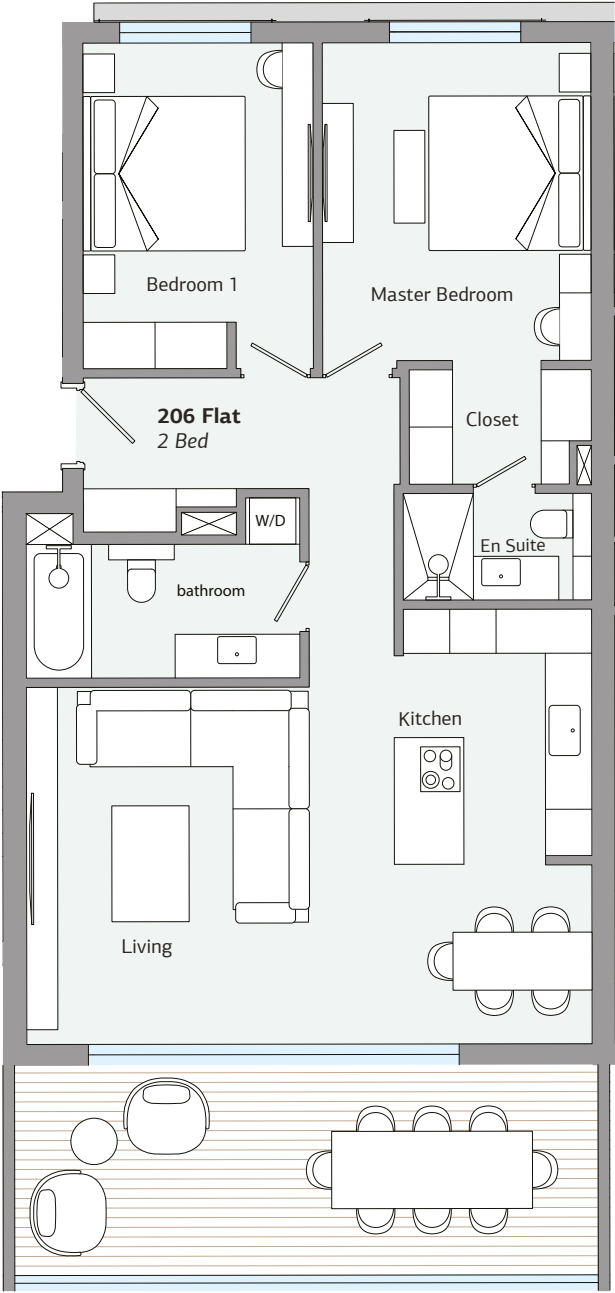
BLOCK & APARTMENT LOCATION

BLOCK C

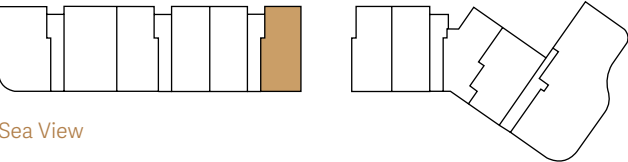
2 | Flat 206

FLAT: 206

Bedrooms: 2
Bathrooms: 2
Area: 97m2
Covered Veranda: 22m2
Total Area: 119m2
Parking: 1
Storage: 2.8m2



Mountain View



Sea View

BLOCK & APARTMENT LOCATION

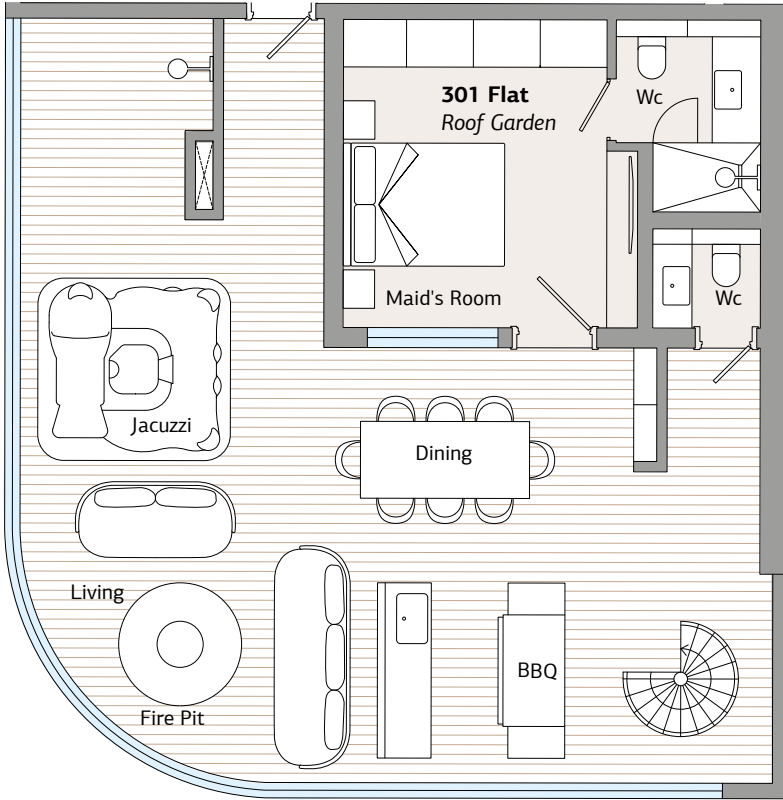
BLOCK F

3 | Flat 301

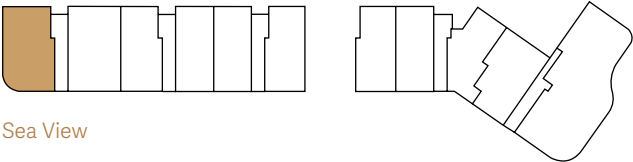
FLAT: 301

Bedrooms: 2+1
Bathrooms: 4
Area: 100m2
Covered Veranda: 55m2
Roof Garden: 96sqm
Roof Garden Cov. Area: 25sqm
Total Area: 180m2
Parking: 1
Storage: 2.8m2

Roof Garden Flat 301



Mountain View



Sea View

BLOCK & APARTMENT LOCATION

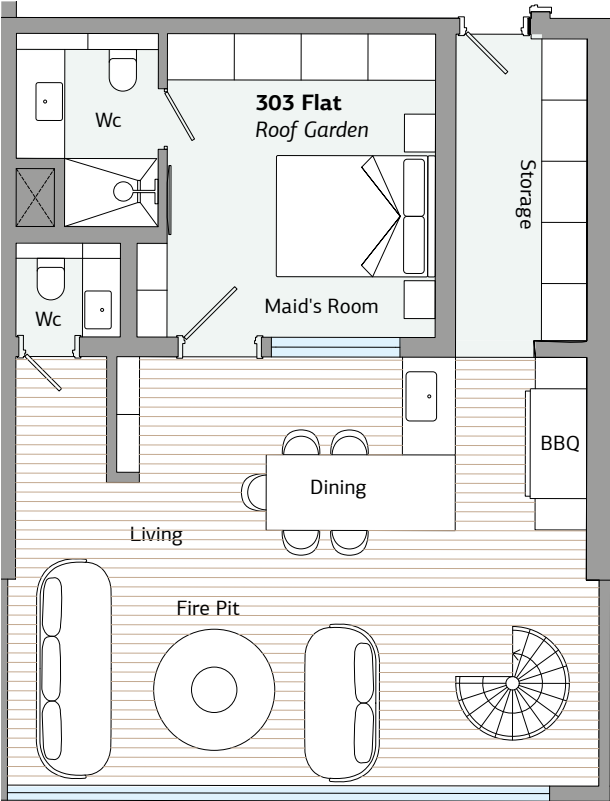
BLOCK C

3 | Flat 303

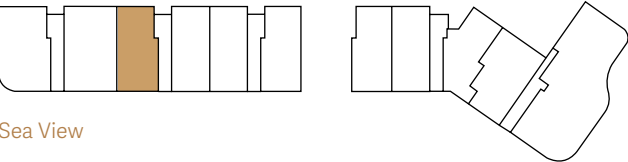
FLAT: 303

Bedrooms: 2+1
Bathrooms: 4
Area: 101m2
Covered Veranda: 23m2
Total Area: 124m2
Parking: 1
Storage: 7.7m2

Roof Garden Flat 303



Mountain View



Sea View

BLOCK & APARTMENT LOCATION



THREE BEDROOM APT. PLANS

BLOCK A 1 | Flat 102

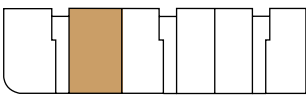


FLAT: 102

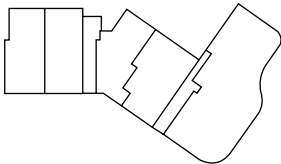
Bedrooms: 3
Bathrooms: 3
Area: 135m2
Covered Veranda: 29m2
Uncovered Veranda: 5m2
Total Area: 164m2
Parking: 1
Storage: 2.8m2



Mountain View



Sea View



BLOCK & APARTMENT LOCATION

BLOCK C

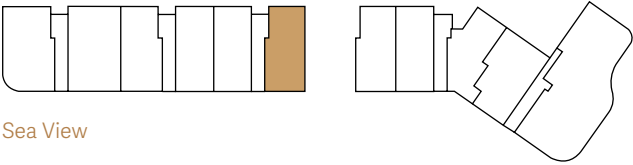
1 | Flat 106

FLAT: 106

Bedrooms: 3
Bathrooms: 2
Area: 125m2
Covered Veranda: 27m2
Uncovered Veranda: 11m2
Total Area: 152m2
Parking: 1
Storage: 2.8m2

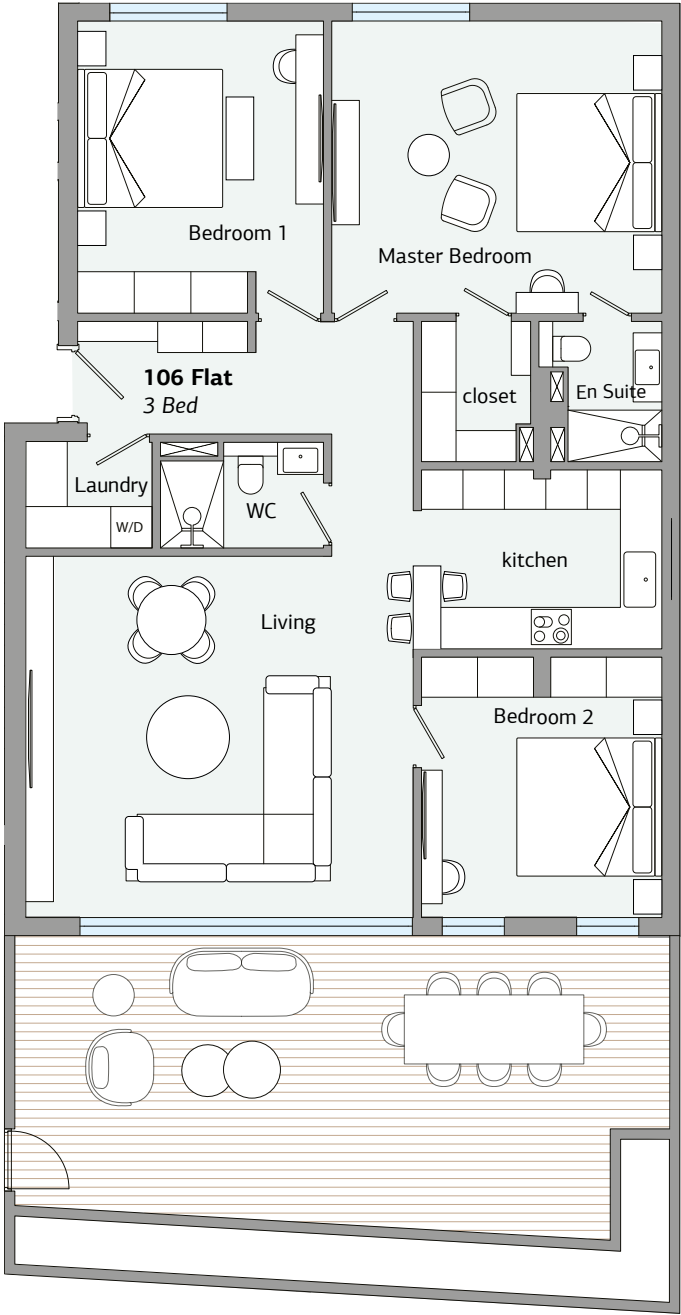


Mountain View



Sea View

BLOCK & APARTMENT LOCATION

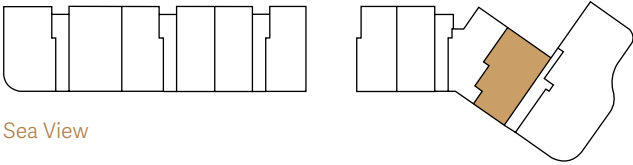


FLAT: 211

Bedrooms: 3
Bathrooms: 3
Area: 125m2
Covered Veranda: 21m2
Total Area: 144m2
Parking: 1
Storage: 2.8m2



Mountain View



Sea View

BLOCK & APARTMENT LOCATION



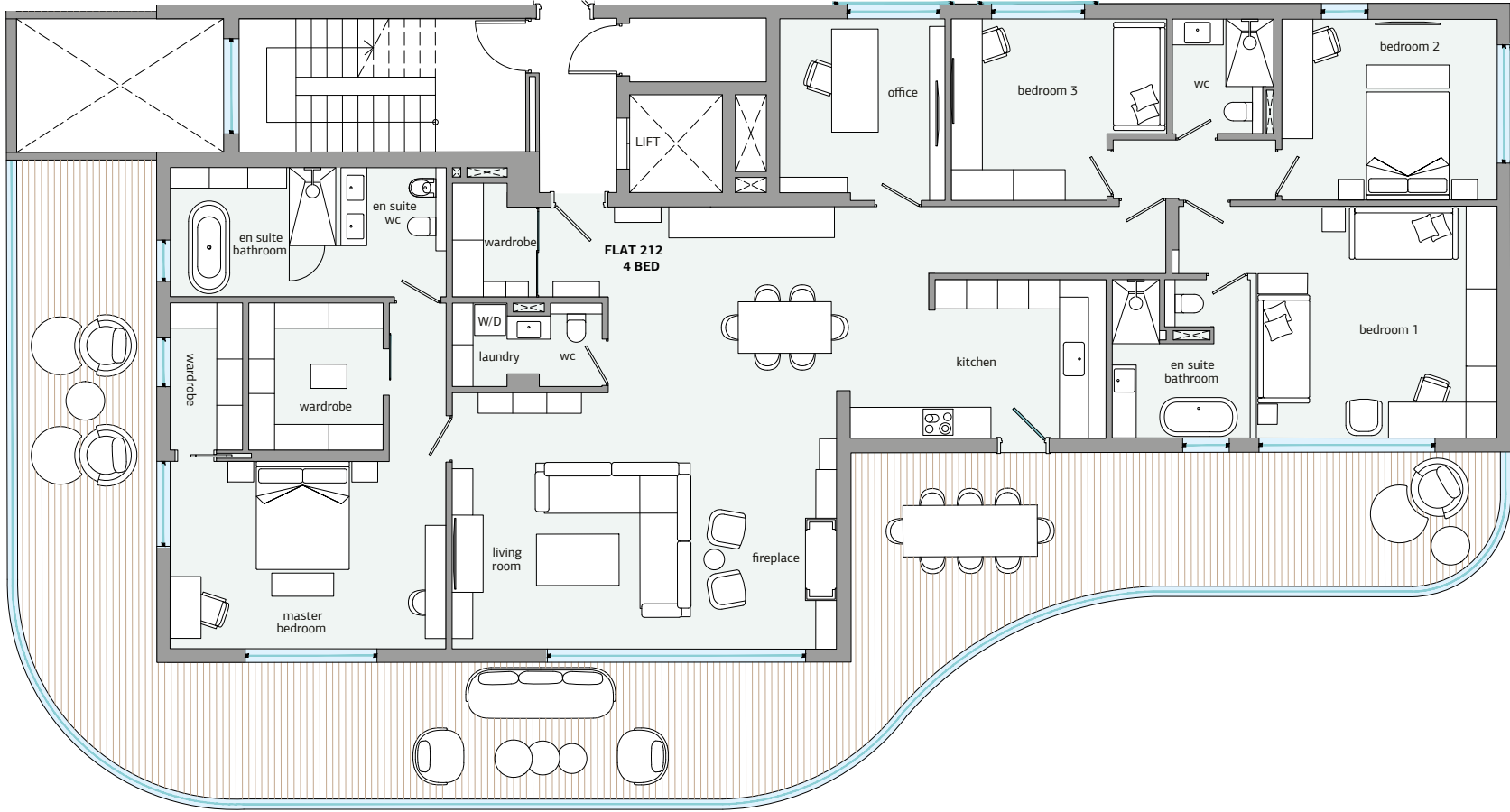
FOUR BEDROOM APT. PLANS

BLOCK F

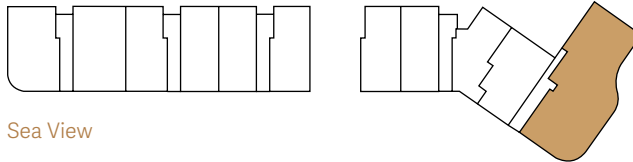
2 | Flat 212

FLAT: 212

Bedrooms: 4 + 1
Bathrooms: 4
Area: 243m2
Covered Veranda: 111m2
Total Area: 354m2
Parking: 2
Storage: 5.6m2



Mountain View



Sea View

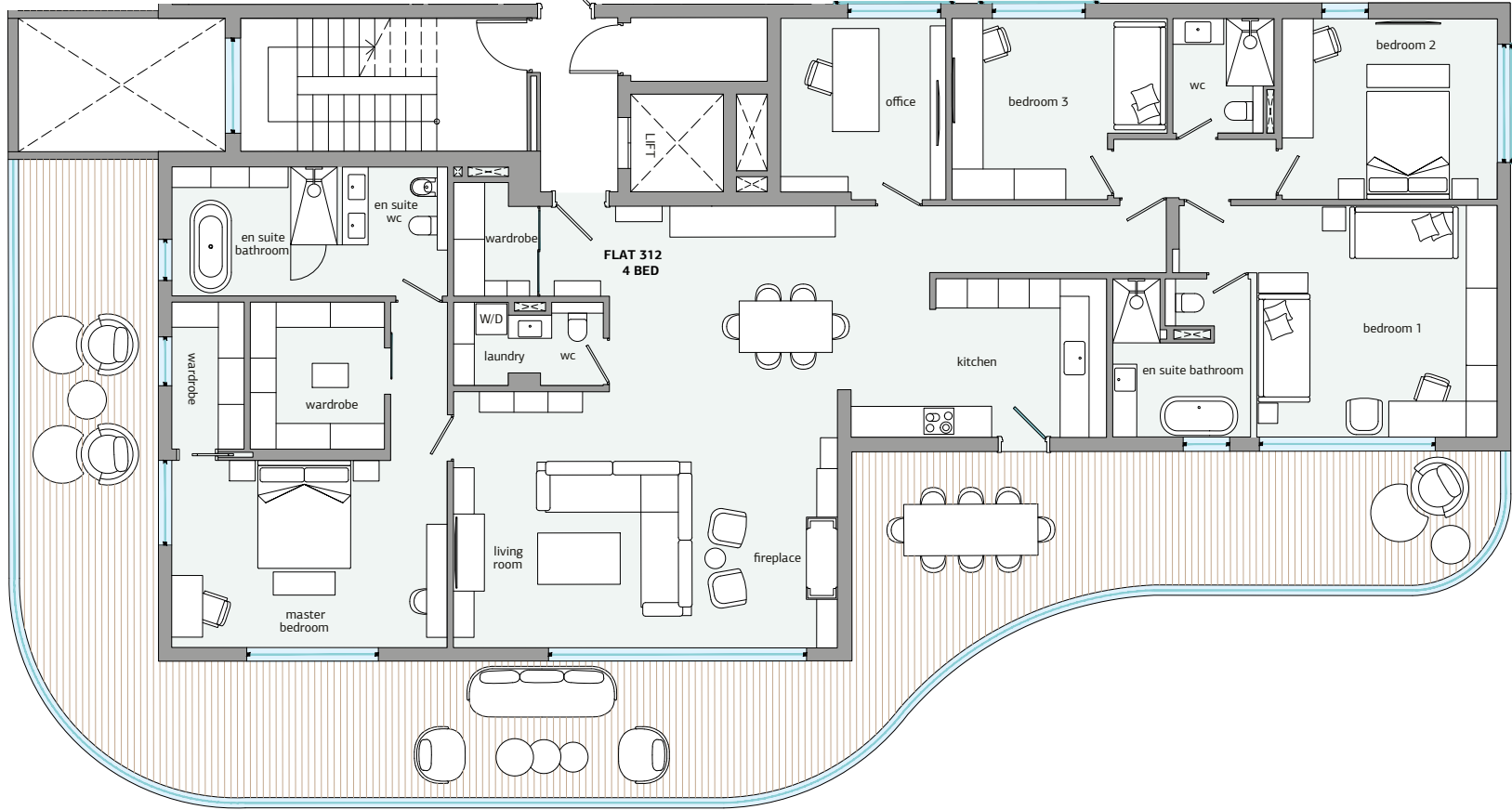
BLOCK & APARTMENT LOCATION

BLOCK F

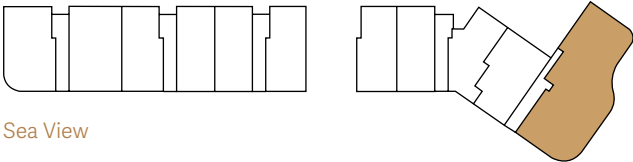
3 | Flat 312

FLAT: 312

Bedrooms: 4 + 1
Bathrooms: 4
Area: 243m2
Covered Veranda: 111m2
Total Area: 354m2
Parking: 2
Storage: 5.6m2



Mountain View



Sea View

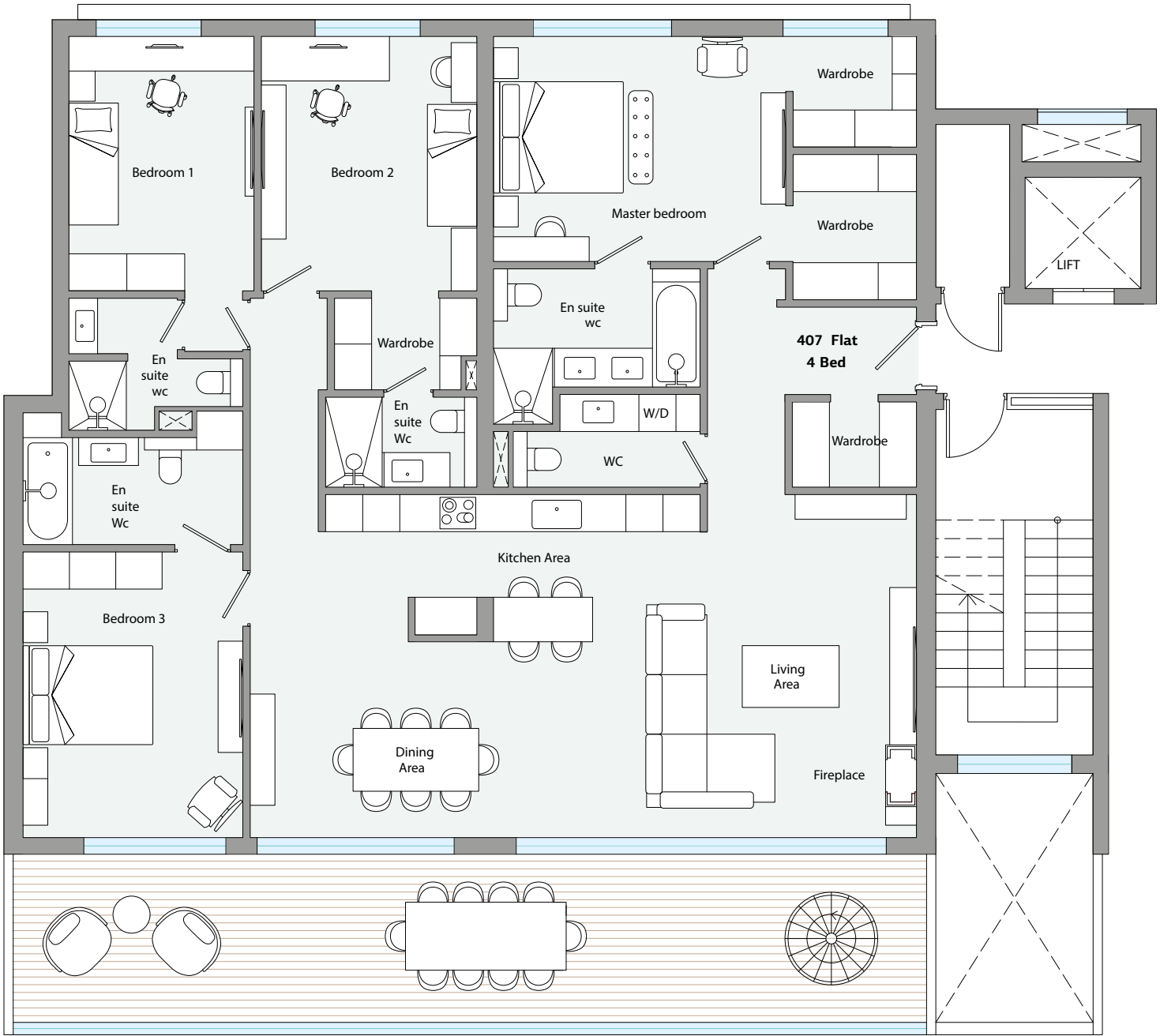
BLOCK & APARTMENT LOCATION

BLOCK C

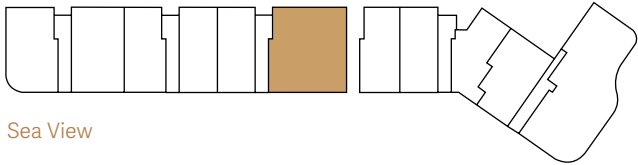
4 | Flat 407

FLAT: 407

Bedrooms: 4+1
Bathrooms: 7
Area: 192m2
Covered Veranda: 43m2
Roof Garden: 112m2
Total Area: 266m2
Parking: 2
Storage: 8.4m2



Mountain View

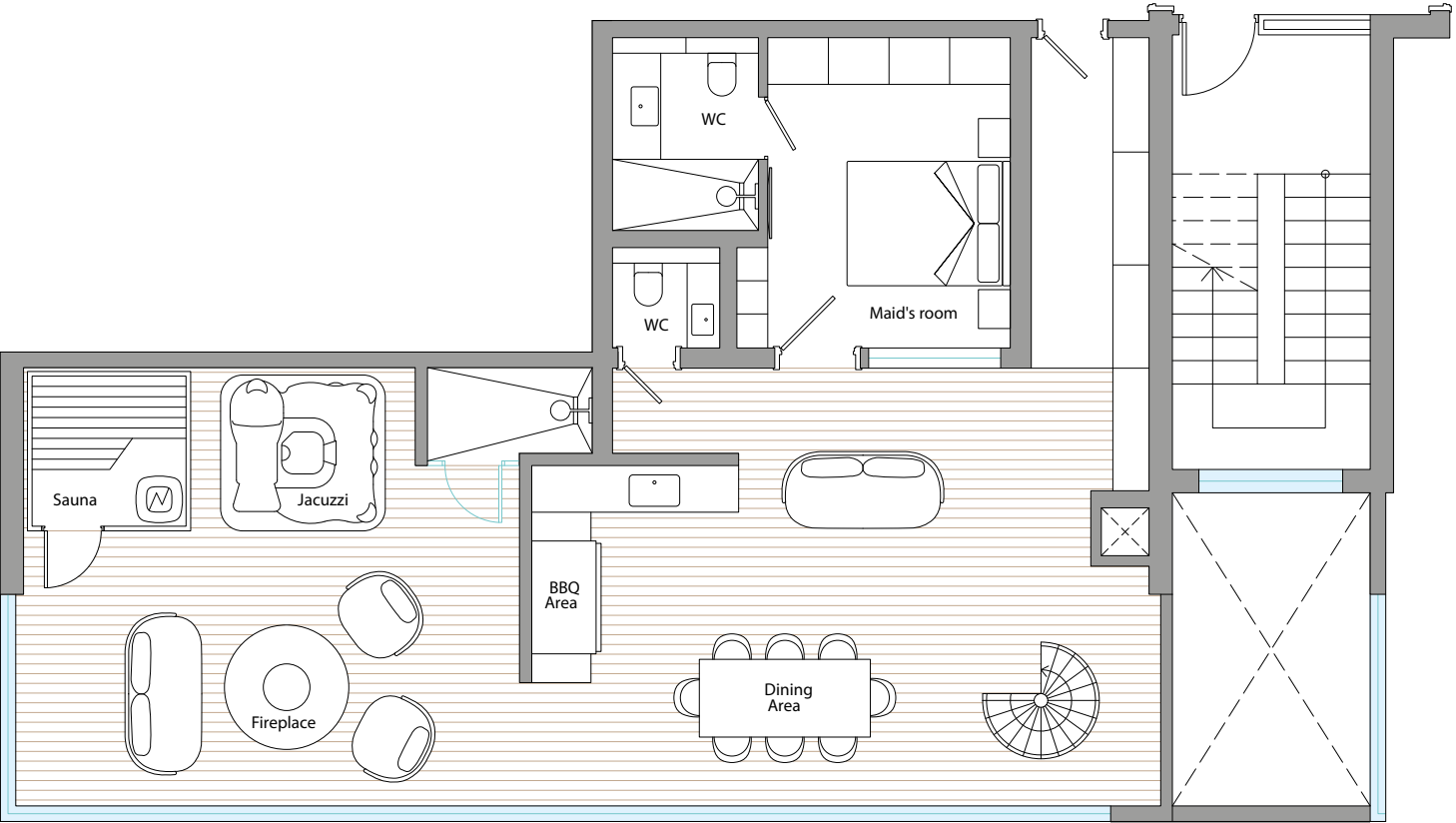


Sea View

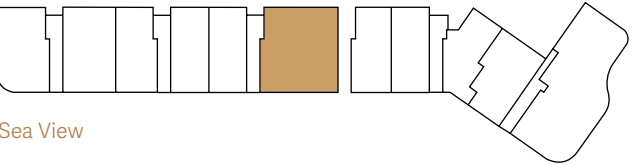
BLOCK & APARTMENT LOCATION

ROOF GARDEN

4 | Flat 407



Mountain View



Sea View

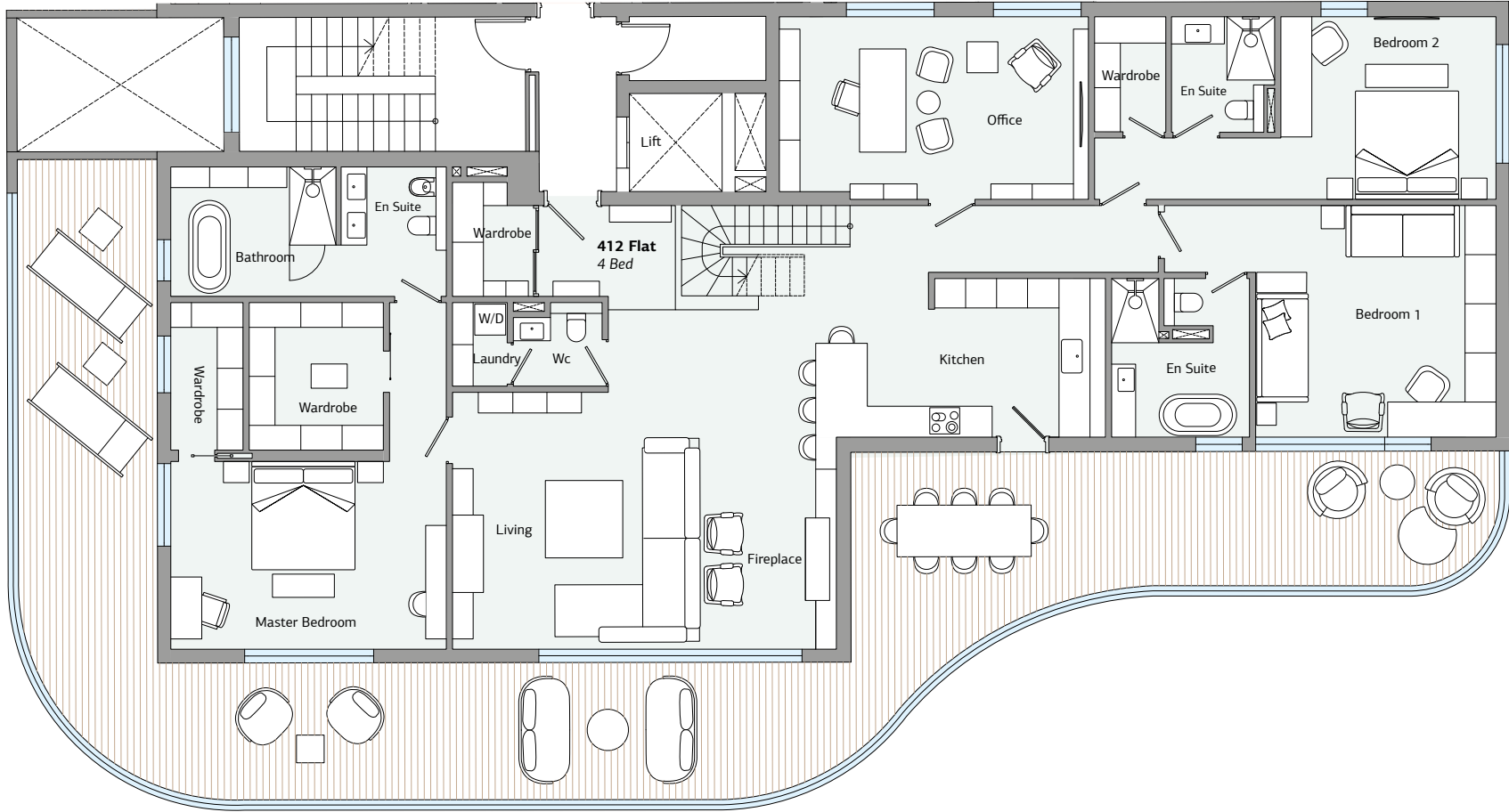
BLOCK & APARTMENT LOCATION

BLOCK F

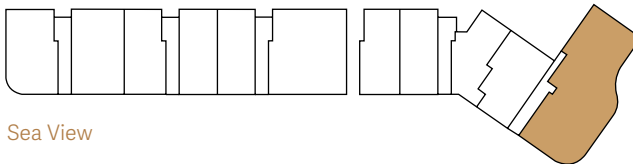
4 | Flat 412

FLAT: 412

Bedrooms: 4 & Office
Bathrooms: 6
Area: 243m2
Covered Veranda: 111m2
Roof Garden: 213sqm
Roof Garden Cov. Area: 55sqm
Total Area: 409m2
Parking: 3
Storage: 17m2



Mountain View

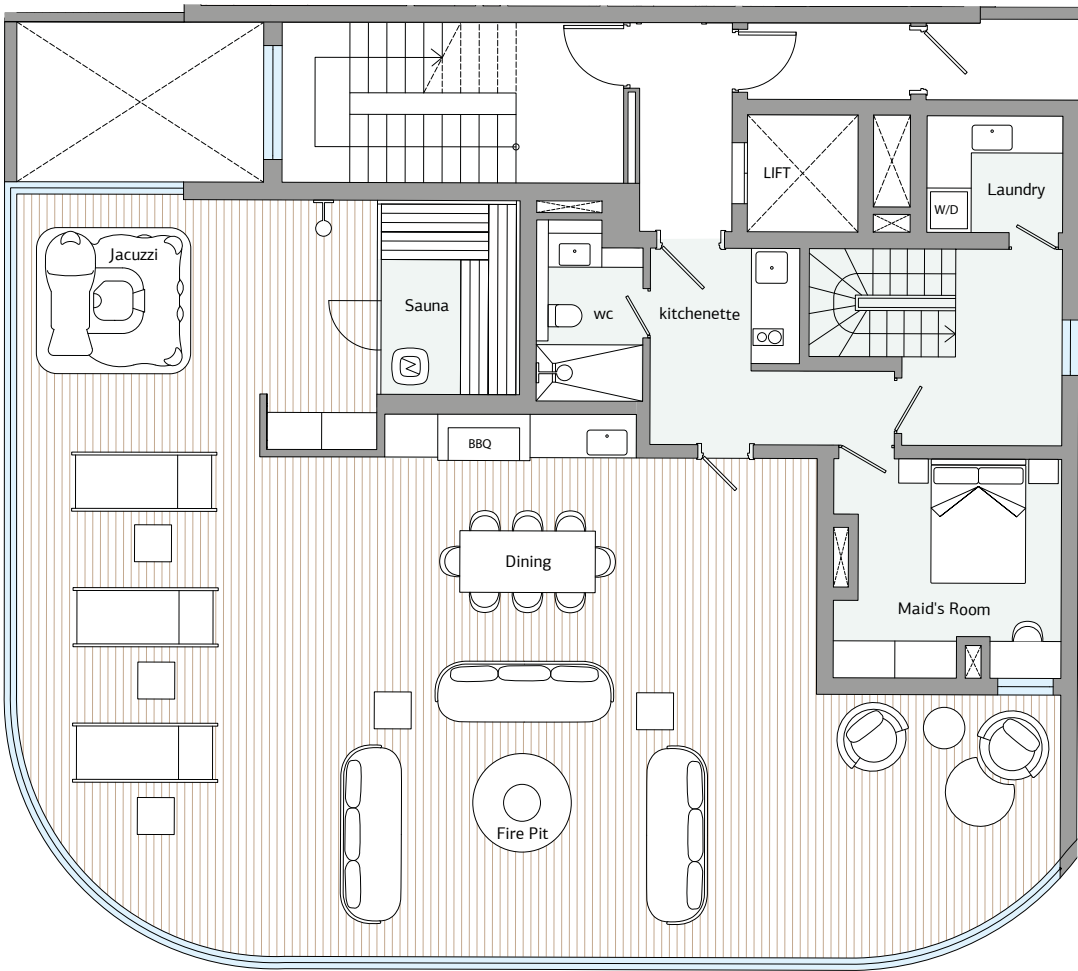


Sea View

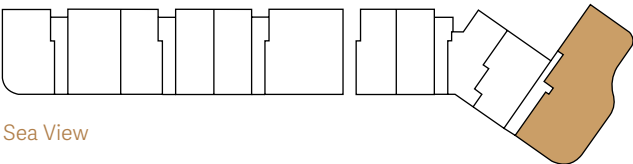
BLOCK & APARTMENT LOCATION

ROOF GARDEN

4 | Flat 412



Mountain View



Sea View

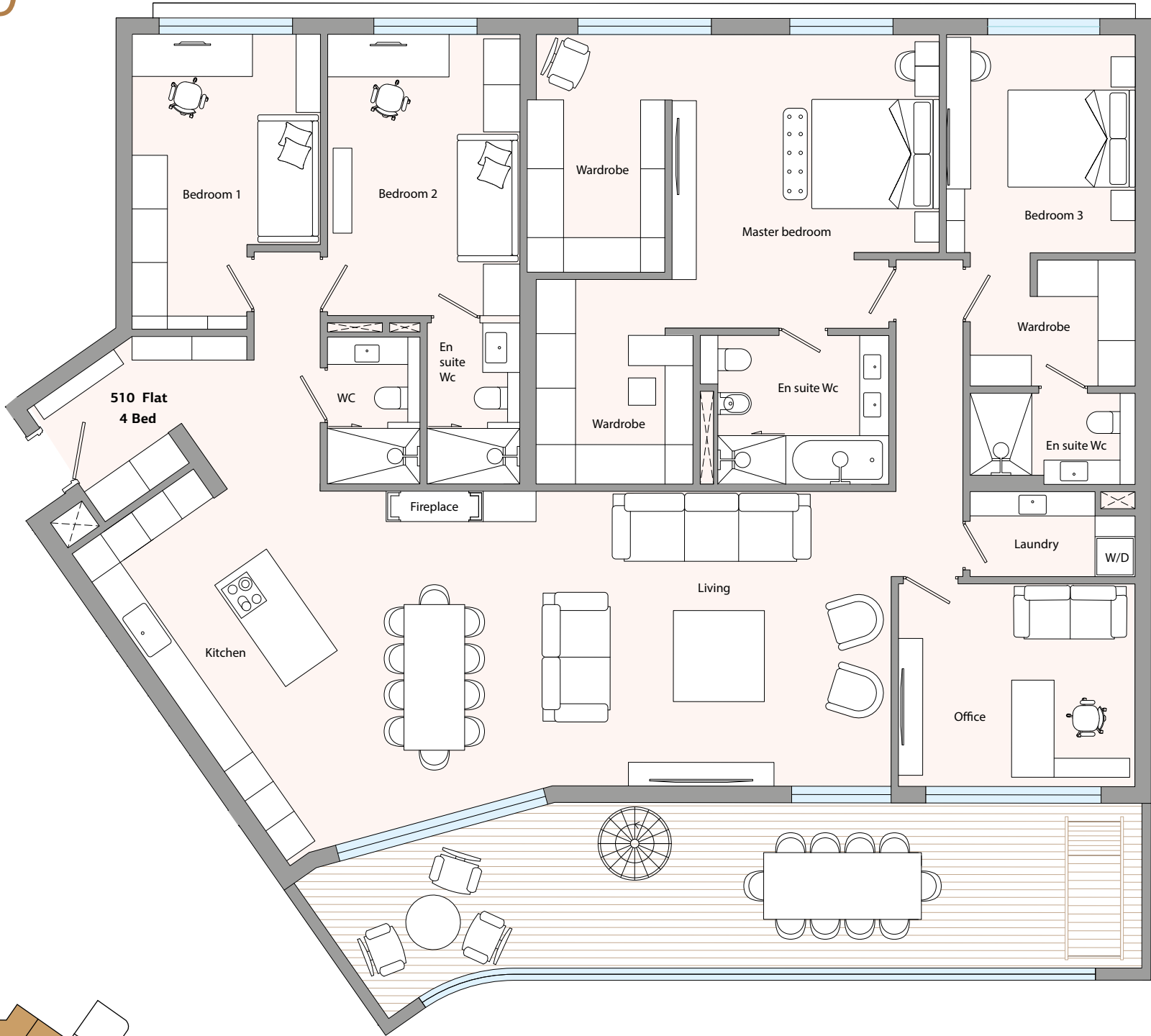
BLOCK & APARTMENT LOCATION

BLOCK E

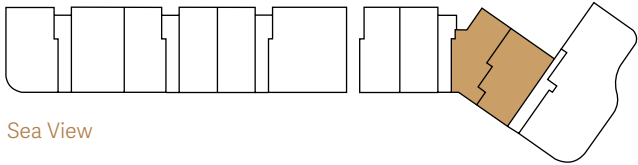
5 | Flat 510

FLAT: 510

Bedrooms: 4 + Office
Bathrooms: 4
Area: 222m2
Covered Veranda: 38m2
Roof Garden: 84sqm
Total Area: 260m2
Parking: 2
Storage: 5.6m2



Mountain View

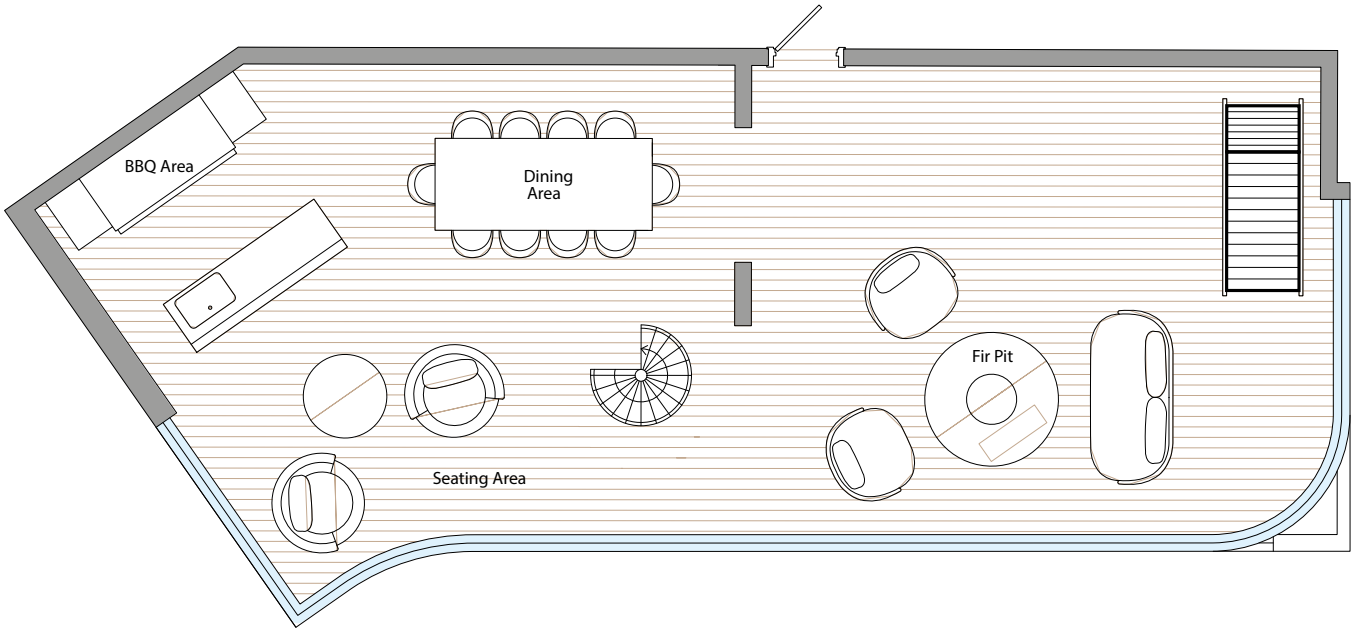


Sea View

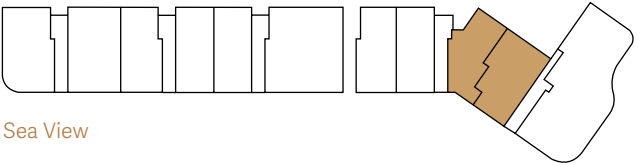
BLOCK & APARTMENT LOCATION

ROOF GARDEN

5 | Flat 510



Mountain View



Sea View

BLOCK & APARTMENT LOCATION





+357 94 00 99 99
+357 94 00 88 88
sales@sunrockresidences.com

www.sunrockresidences.com

Visit The
Website



Download
Full Plans



A PROJECT BY
BLUE REEF DEVELOPMENTS

All Material included in this brochure are indicative of final specification and are subject to change.
The information in this document has been prepared solely for the purpose of providing general information about the project. We have taken care to ensure that the information is accurate at the time of its inclusion in this brochure, but do not guarantee the accuracy or completeness and shall not be liable for any loss or damage which may arise from reliance on the information. The developers reserve the right to make modifications and changes to architectural and interior features and finishes, brands, colours, materials, building design, specifications, ceiling heights, flooring patterns and floor plans without notification. Actual plans may have minor variations to the typical plans shown in this document. All matters will be governed by the applicable purchase and sales agreement. The Developer retains the copyright of material in this brochure and may change the content or format at any time.



SUNROCK
RESIDENCES