

Country Rose  
S O U N I

### **A few words about Country Rose Ltd**

The company began its operations with its first project in Platres, a popular holiday resort located in the Troodos Mountains. In 1999 after the successful completion and sale of the Platres project, Country Rose began its work in the village of Souni, where it has been successfully building homes of distinction ever since. Country Rose strives for excellence in every aspect of the company's operations. Quality is ensured by the fact that the construction company is fully owned and operated by Country Rose, which means every aspect of the process of building is under our control and can meet our stringent quality criteria. Aftersales play an equally important role for the company and our goal is to offer full support to the client long after completion of the sale of a property, providing him with help and assistance wherever required. At the time of writing the company has constructed more than 200 villas in the area of Souni.

## **A few words about Souni**

Situated on the foothills of Troodos Mountain, the area is famed for its wineries and its local flora, which is dominated by pine, olive and carob trees. It is a quiet area with proximity to Erimi (7kms) Episkopi (8kms) and Kolossi (9kms) large towns where supermarkets, restaurants, pharmacies, bars, banks, petrol stations, garages and shops can be found. The famous Kourio beach, one of the best beaches in Limassol is 12kms away. Souni is also serviced by a bus route that goes through Kantou to Limassol.

## **Places of Interest in Souni**

- Coffee shop (<https://www.facebook.com/SouniZanakiaCCS/>)
- Blue Island gourmet restaurant (<https://www.facebook.com/p/Blue-Island-Restaurant-100063539381665/>)
- Pharmacy (<https://www.facebook.com/fusecassandrapanayiotou/>)
- Kindergarten and primary school
- Post office

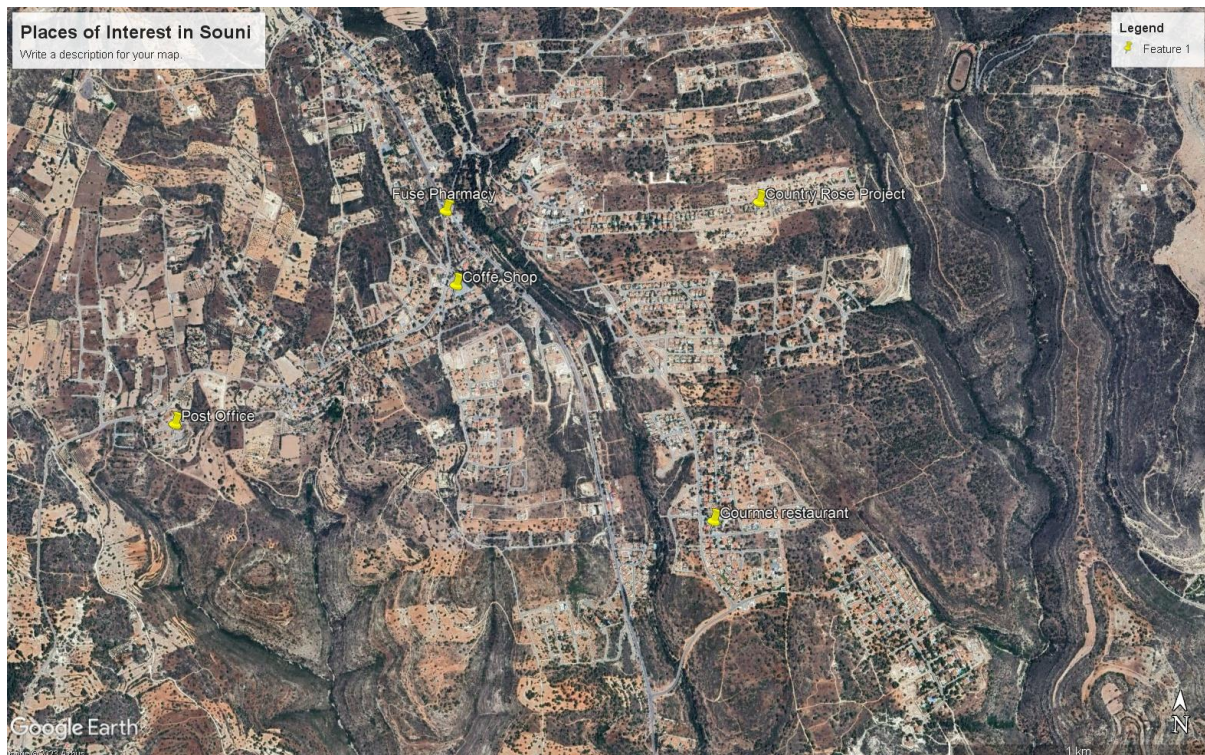
## **Places of Interest close to Souni**

- Bank of Cyprus in Erimi (8kms) 9mins drive
- Lysiotis Supermarket in Episkopi (9kms) 10mins drive
- New Football Stadium in Kolossi (11kms) 12mins drive
- Alpha Mega Supermarket Kolossi (11kms) 14mins drive
- Kourio Beach (12kms) 15mins drive
- General Hospital in Limassol (17kms) 17mins drive
- Omodhos wineries in Omodhos village (19kms) 20mins
- My Mall shopping center in Limassol (20kms) 22mins drive
- City of Dreams Hotel Resort and Casino in Limassol (21kms) 23mins drive

## **Other Places of Interest**

- Ladys Mile beach (23kms) 25 mins drive
- Heritage Private School in Palodia (24kms) 25mins drive
- Paphos International airport (47kms) 35 mins drive
- Larnaca International airport (86kms) 55mins drive





*Maps indicating various locations. The houses are situated in the location marked Country Rose Project*

