



Old Guildford Road, Broadbridge Heath, RH12

£495,000

🛏 3 🍳 3 🛋 2



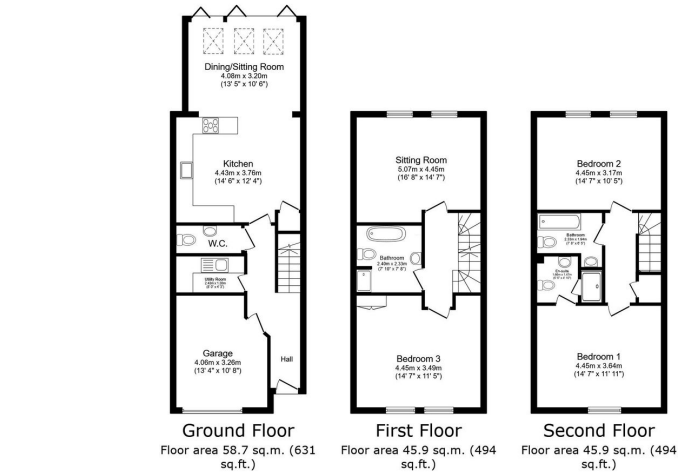
- 3 Double Bedrooms
- Off Street Parking
- Modern Kitchen Diner Extension
- Two Ensuits Bathrooms
- Large Family Bathroom
- Electric Car Charging Point
- Low Maintenance Garden
- Garage Prime For Conversion
- South Facing Garden
- Utility Room



Clickmymove.com are proud to present this exceptional three double bedroom townhouse, arranged over three floors, offering a top-of-the-range kitchen/diner with quartz worktops, a spacious open-plan lounge and dining area, an additional lounge, a separate utility room, a low-maintenance garden, a large family bathroom, and two modern en-suites. Additional features include a garage with conversion potential, driveway parking, and an electric car charging point, all set within the highly desirable Broadbridge Heath.



Mulberry Gardens, Horsham, RH12 3NH



Total floor area: 150.5 sq.m. (1,619 sq.ft.)
*This floor plan is for illustrative purposes only. It is not drawn to scale. Any measurements, floor areas (including any total floor area), openings and orientations are approximate. No details are guaranteed, they cannot be relied upon for any purpose and do not form any part of any agreement. No liability is taken for any error, omission or misstatement. A party must rely upon its own inspection(s). Powered by www.propertybox.co.uk

