





# West Green, Stokesley

£585,000

4 1 1





Town meets country at this charming and impressive character home, situated in a priceless location overlooking West Green and close to the vibrant amenities of Stokesley.

At 42 West Green, you can enjoy a café culture and then retreat to your own piece of the country, with extensive gardens, a separate paddock and off-street parking for multiple cars.

Here a stylish, warm and welcoming interior will greet you:

**To the Ground Floor** - Very spacious entrance hall with wooden floor, understairs cupboard and period style doors leading to all rooms, including a cloakroom/wc and utility room.

A delightful reception room with a beautiful bay window, with window seat and under storage, overlooking West Green and a multi-fuel burning stove, adding both warmth and charm, perfect for cosy evenings. With a blend of classic elegance and practicality, this room offers a welcoming atmosphere, ideal for relaxation and entertaining.

The traditional kitchen dining room is a cook's paradise and provides a rustic feel with stone floor tiles, integrated appliances and an island / breakfast bar. West facing French doors lead to the rear garden, while a window in the dining area has a leafy view of West Green.

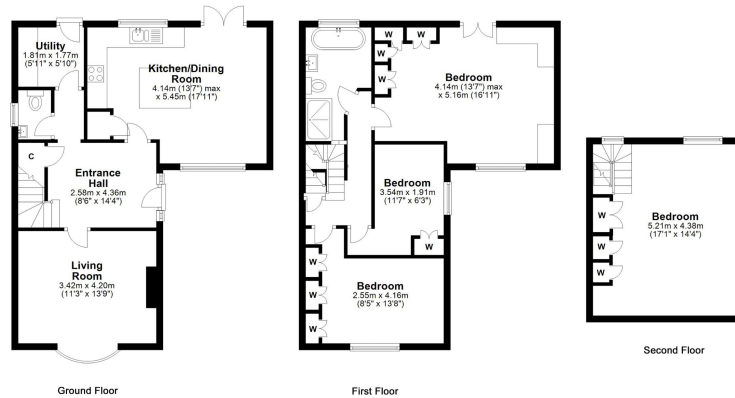
**To the first floor** - 3 bedrooms – all with fitted wardrobes (what a bonus!) and a recently refurbished, beautifully designed bathroom with a bath and separate shower. The very spacious master bedroom is bright and airy with French doors and Juliette balcony to the rear and window to the front looking over West Green.

**To the second floor** - A bedroom with a great range of fitted storage and windows flooding the room with light. Feeling away from it all, this space is a teenager's dream!

**Externally** - Garden to the front with double gates to the side leading to driveway multiple storage sheds for added convenience and parking for multiple cars.

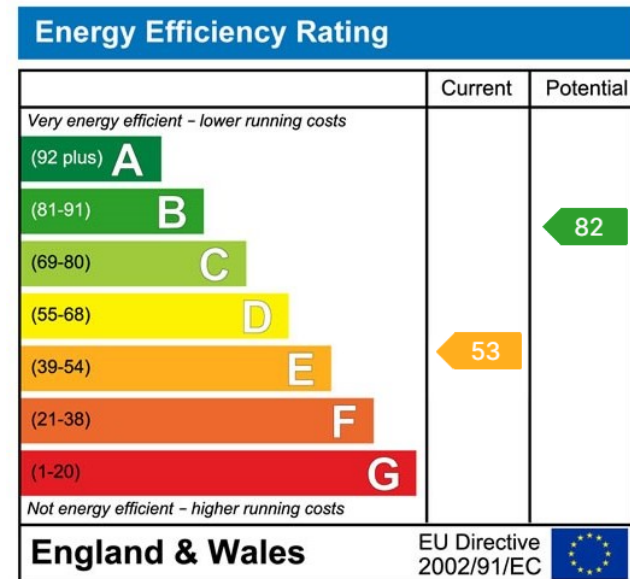


# West Green Stokesley



Whilst every attempt has been made to ensure the accuracy of the floorplans contained here, measurements of doors, windows, rooms and any other items are approximate and no responsibility is taken for any error, omission or mis-statement. This plan is not drawn to scale and is for illustrative purposes only & should be used as such by any prospective purchaser. Created by VueStudy Ltd

- Character end-of-terrace
- Extensive grounds – gardens, parking, small paddock
- Priceless location, close to amenities
- 4 bedrooms – 3 first floor, 1 second floor
- Cloakroom/wc & utility room
- Kitchen/dining room
- Delightful lounge – multi-fuel stove
- Refurbished bathroom – shower & bath
- Fantastic storage inside and out



[www.kathrynbarrestateagents.co.uk](http://www.kathrynbarrestateagents.co.uk)

Holme Lane, Seamer  
North Yorkshire, TS9 5LL



Kathryn Barr Estate Agents Ltd, Company number 16225259 is registered in England at office Holme Lane, Seamer, North Yorkshire TS9 5LL  
Member of Property Redress Scheme, membership number PRS050432

Tel: 01642 798707  
[kathryn@kathrynbarrestateagents.co.uk](mailto:kathryn@kathrynbarrestateagents.co.uk)