



The Gables, Potto

£750,000

🛏 4 🚿 2 🛋 4



Welcome to The Gables at Potto Hall, a magnificent period conversion, full of atmosphere, elegance and grand proportions, you can enjoy over 3000 square feet of luxurious, classic character combined with up-to-date comfort.

Ground Floor - Step into the welcoming entrance hall, with its fine staircase to the first floor, oak doors off to all rooms and beautiful wooden floor that also flows through to the drawing room and the dining room. A study, with a fitted desk, is quietly situated at the front of the home. The inviting living room has a feature fireplace, windows providing a leafy view and a door leading through to the kitchen breakfast room. The drawing room features on-trend wood paneling, painted in green to give a country feel. With three huge windows and the exquisite wooden floor, the dining room is stunning.

The heart of the home is an extremely spacious, flexible and well appointed kitchen breakfast room, with a real country house feel. Maple wood units in the kitchen breakfast room are complemented by a central island, granite worktops, stainless steel Belfast style sink, SMEG range cooker, American-style fridge freezer, integrated appliances and a charming log burner, making this room somewhere for everyone to linger, especially on cold winter's days.

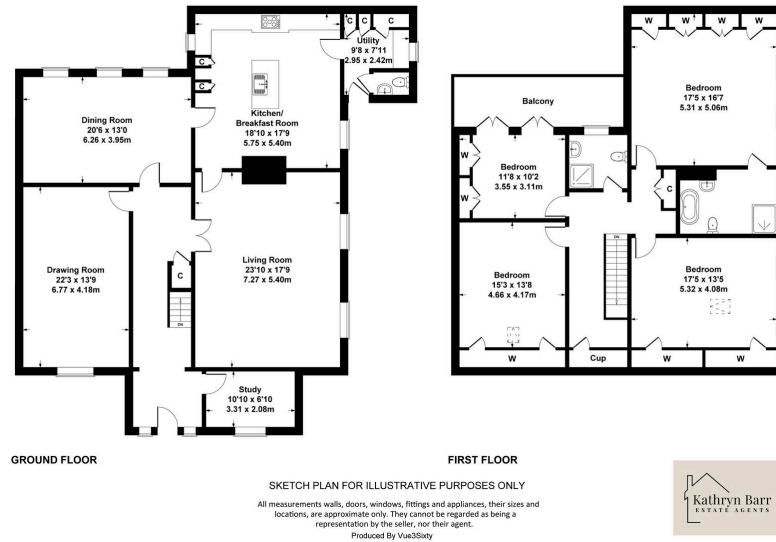
Leading from the kitchen is a practical and smart utility/boot room fitted with floor to ceiling units together with base units and worktop. This in turn leads to a cloakroom/wc.

First Floor - Four bedrooms, spacious landing. The master bedroom has a vaulted ceiling, adding character and a run of fitted wardrobes. There is also the most luxurious and stylish en-suite ever, with a spacious shower and a bath. Three further double bedrooms - one with vaulted ceiling, one with doors opening onto a balcony and two benefiting from fitted wardrobes - all share a stunning and spacious shower room, with a period feel.

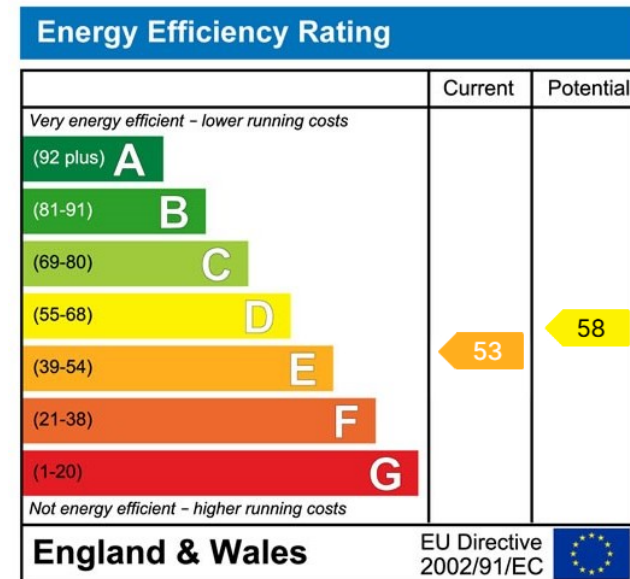
Externally - To the front is a lawned area, to the rear you can enjoy a private enclosed garden, from your private garden you can also access to a maintained communal woodland and double garage.



6 Potto Hall, DL6 3EU
Approximate gross internal area
House - 288 sq m - 3100 sq ft



- Period Conversion
- Country House Setting
- Four Bedrooms - master en-suite
- Four Reception Rooms
- Kitchen Breakfast Room
- Utility/Boot Room, cloaks/wc
- Secure Gated Entrance
- Lovely Private Garden
- Enchanting Communal Woodland
- Detached Double Garage



www.kathrynbarrestateagents.co.uk

Holme Lane, Seamer
North Yorkshire, TS9 5LL



Kathryn Barr Estate Agents Ltd, Company number 16225259 is registered in England at office Holme Lane, Seamer, North Yorkshire TS9 5LL
Member of Property Redress Scheme, membership number PRS050432

Tel: 01642 798707
kathryn@kathrynbarrestateagents.co.uk