




## Preseli Grove, Ingleby Barwick, TS17 5HB

Offers In Region Of £285,000

 4  2  1



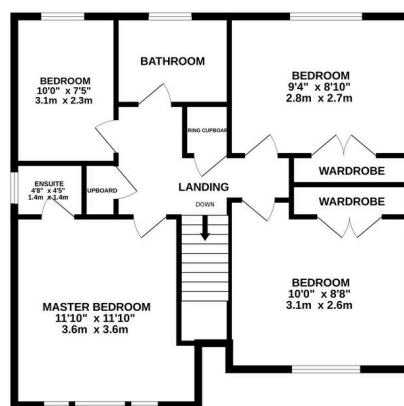
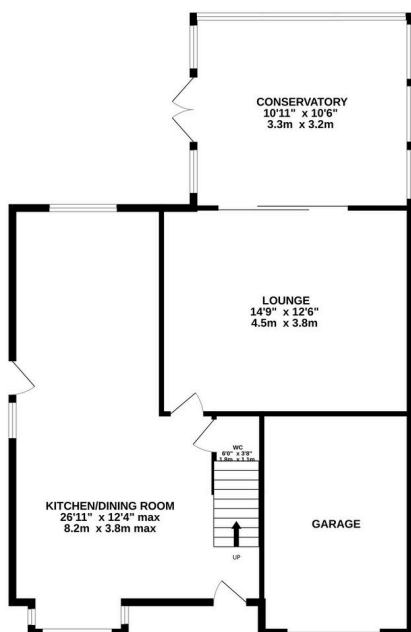
- Detached family home
- Open plan kitchen/dining/living room
- Master bedroom with en-suite
- 2 bedrooms offering fitted wardrobes
- Single Garage
- 4 Bedrooms
- Separate lounge & conservatory
- Recently refurbished family bathroom
- Front and rear gardens
- Driveway for Multiple cars



GROUND FLOOR  
1202 sq.ft. (111.7 sq.m.) approx.



1ST FLOOR  
855 sq.ft. (79.4 sq.m.) approx.



TOTAL FLOOR AREA: 2057 sq.ft. (191.1 sq.m.) approx.  
Whilst every attempt has been made to ensure the accuracy of the floorplan contained here, measurements of doors, windows, rooms and any other items are approximate and no responsibility is taken for any error, omission or mis-statement. This plan is for illustrative purposes only and should be used as such by any prospective purchaser. The services, systems and appliances shown have not been tested and no guarantee as to their operability or efficiency can be given.  
Made with Metropix ©2025

With great kerb appeal, this must-see detached home is impressive.

**Disclaimer Note:** 1. Whilst every care has been taken in the preparation of these particulars, and they are believed to be correct, intending purchasers should satisfy themselves as to the correctness of the information given. Kathryn Barr Estate Agents does not accept responsibility for any errors in the information provided. 2. Our particulars are for guidance only and do not form part of any offer or contract. They should not be relied upon as statements or representation of fact or warranty. 3. All dimensions and shapes are approximate. 4. We have not tested any services, appliances, equipment, facilities or fittings and cannot verify that they are in working order.

