

More sides to city living.

# The Octagon

[theoctagonbirmingham.co.uk](http://theoctagonbirmingham.co.uk)

# Contents

<u>Introduction</u>	03
<u>Your neighbourhood</u>	04
<u>Living at The Octagon</u>	08
<u>Apartment types</u>	10
<u>Your spaces</u>	18



The Octagon is the world's first purely octagonal high-rise residential building. At 155 metres, it is Birmingham's tallest building, offering unparalleled views of the city and beyond.

Live in an iconic landmark where bold design meets refined elegance. The Octagon's sculpted, metallic façade creates a striking crystalline form, reflecting light and shadow throughout the day - offering ever-changing beauty from every angle.





Perfectly placed in the heart of Birmingham. Connect to culture, entertainment, creativity, business, the rest of the UK and the world. This is Paradise.

Experience life with everything at your fingertips. The Octagon, positioned at the northern gateway of Paradise, is a dynamic and creative neighbourhood where food, design, and culture come together. Immerse yourself in a thriving community, where every corner holds something new to explore.

# At the centre of it all



# Your neighbourhood

The City's heartbeat, right outside. A place packed with world-class shopping, top-tier dining, and cultural attractions, all just moments away. Enjoy scenic walks along the canal, explore bustling streets, or relax in nearby green spaces. The Octagon places you on the doorstep of everything Birmingham has to offer.

## A PARADISE All within a 5 min walk

From coffee to culture, there's plenty to explore that's right on your doorstep.

- ① ROSA'S THAI CAFE
- ② ALBERT'S SCHLOSS
- ③ LA BELLEZZA
- ④ DISHOOM
- ⑤ COW & SOW
- ⑥ BIRMINGHAM MUSEUM AND ART GALLERY
- ⑦ F1 ARCADE
- ⑧ YORK'S CAFE

## B JEWELLERY QUARTER Approx. 11 min walk

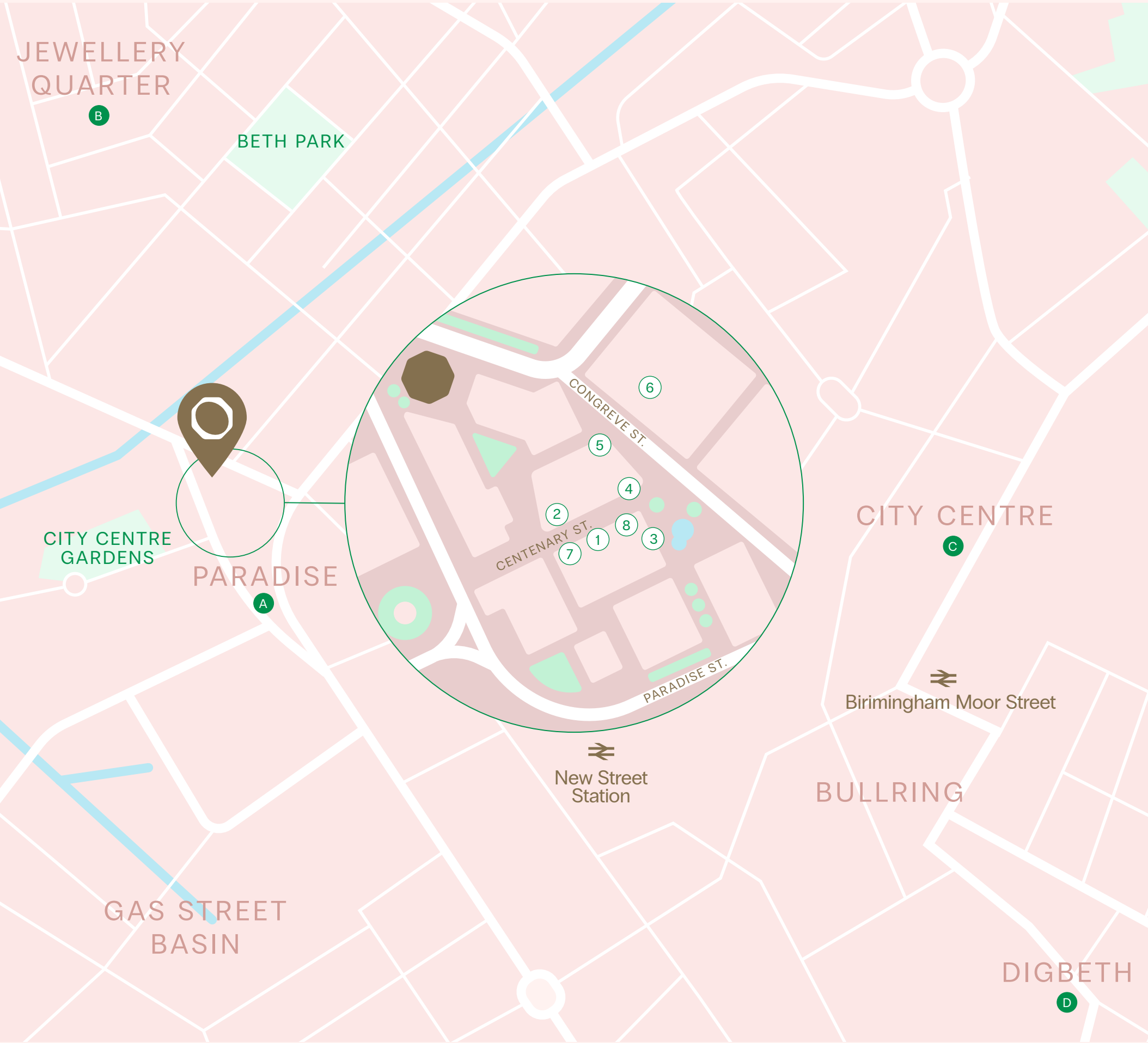
A historic area with jewellers, independent, trendy bars and a thriving food scene.

## C CITY CENTRE Approx. 12 min walk

A dynamic mix of shopping and dining, including the Bullring & Grand Central Shopping Centre.

## D DIGBETH Approx. 20 min walk

A creative and cultural hotspot, known for its street art, independent bars, and vibrant nightlife.





# 8 wonders in Paradise



1.



2.



3.



4.



5.

Some of our neighbourhood top picks right on your doorstep.

1. **ROSA'S THAI CAFE**  
3 min walk, One Chamberlain Sq,  
A family of foodies dedicated to serving up authentic Thai food.

2. **ALBERT'S SCHLOSS**  
3 min walk, Paradise Circus, Chamberlain Sq  
Bavarian-style restaurant and bar with roaring fires and live performances.

3. **LA BELLEZZA**  
4 min walk, 2 Chamberlain Sq,  
Beautiful Italian restaurant and pizzeria, with an outdoor terrace.

4. **DISHOOM**  
3 min walk, One Chamberlain Sq,  
Restaurant and bar serving Bombay comfort food.

5. **COW & SOW**  
3 min walk, One Chamberlain Sq  
Steakhouse featuring an array of prime aged steaks.

6. **BIRMINGHAM MUSEUM AND ART GALLERY**  
3 min walk, Chamberlain Sq  
Get your culture fix with collections ranging from fine art to archaeology.

7. **F1 ARCADE**  
4 min walk, 2 Chamberlain Sq,  
A thrilling simulation racing experience with tasty food, and unique cocktails.

8. **YORK'S CAFE**  
4 min walk, Two Chamberlain Sq,  
Vibrant, all-day dining with high-quality coffee and award-winning brunch.



6.



7.



8.

# MORE

sides to  
city living.



A new landmark, rising above the city's tallest. This is life from a new vantage point, a world-first in city living. Large opening windows frame exceptional views.

The building's unique shape creates apartments that are larger, wider and lighter than conventionally shaped equivalents, with large opening windows that frame an unparalleled skyline.

# The high life



*Computer generated images are indicative only.*



# Premium design

Discover generous living spaces within a truly unique architectural landmark, designed by award winning architect practice Howells.

Bright and spacious apartments blend style, comfort, and functionality, with large windows that flood each room with natural light.

Clean lines, open layouts, and quality finishes made for modern living enhance the sense of openness in each apartment.



2 bedroom apartment



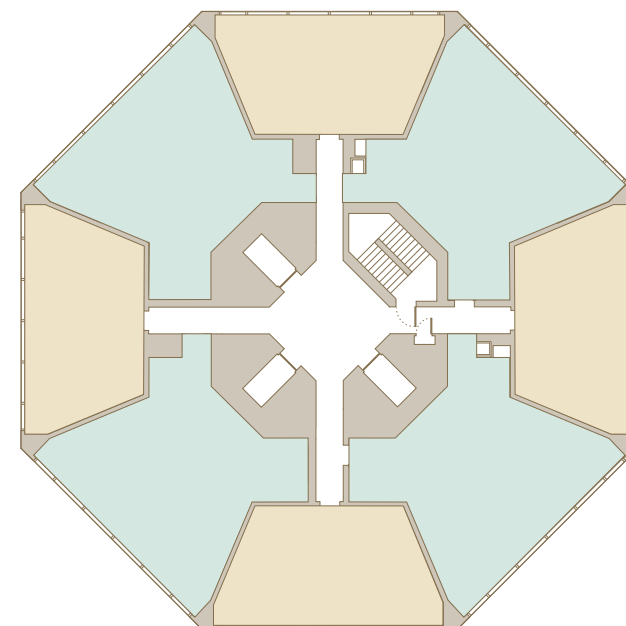
# Find your apartment

- 1 Bedroom
- 2 Bedroom
- 3 Bedroom

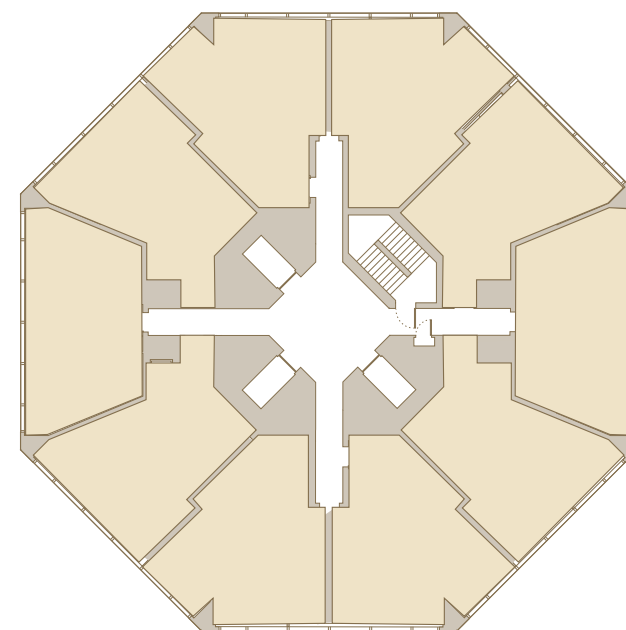
The Octagon is home to 370 apartments offering a mix of one, two and three-bedroom options. Discover a collection of beautifully designed homes where skyline views, Scandinavian comfort, and city energy come together. Modern wooden flooring and soothing, neutral tones create a serene and inviting atmosphere.

From stylish 1-bedroom apartments to expansive 3-bedroom penthouses, each space is crafted for modern living - defined by refined interiors, tactile materials, and a distinctly urban edge, courtesy of BoConcept's award-winning design.

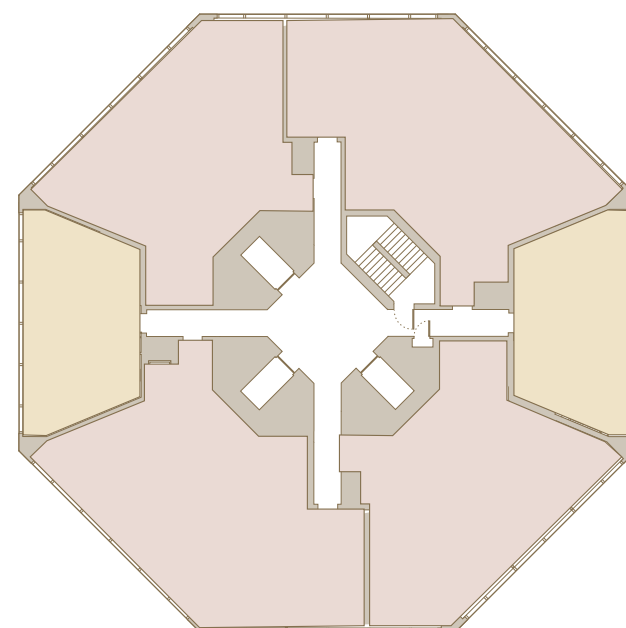
## Levels 1-36



## Levels 37-43



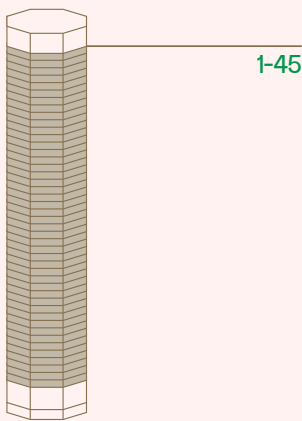
## Levels 44-45





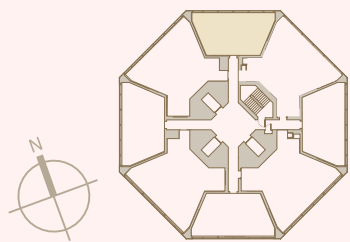
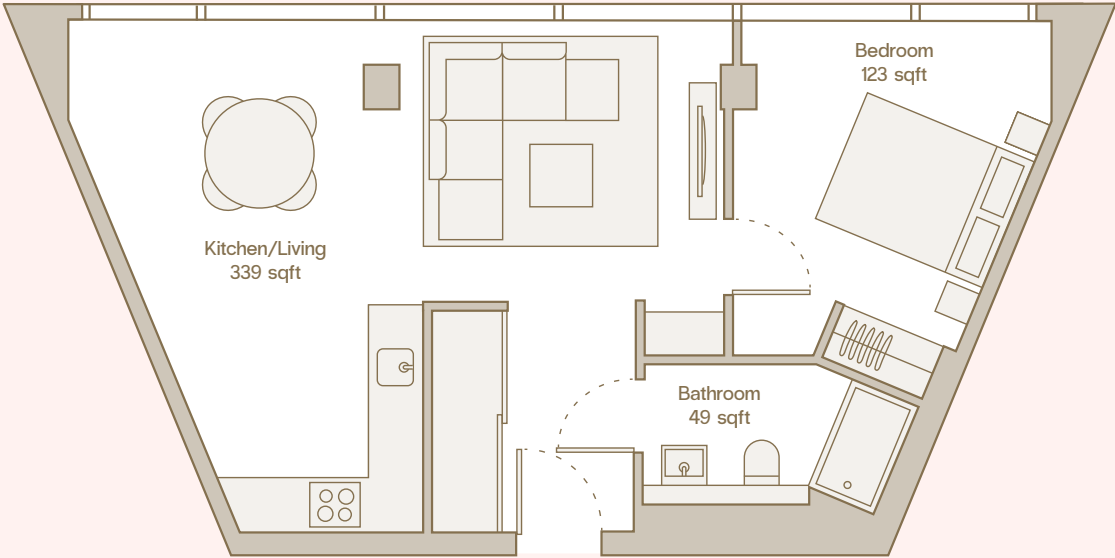
# 1 Bedroom

A space designed for effortless living. Thoughtfully crafted interiors, open-plan design, and room wide windows create a light-filled sanctuary in the city.



TYPE A LEVELS 1-45

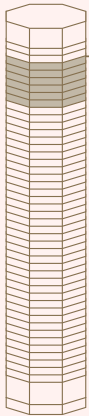
Total Area	Kitchen/Living	Bedroom	Bathroom
577 sqft	339 sqft	123 sqft	49 sqft



1 bedroom apartment



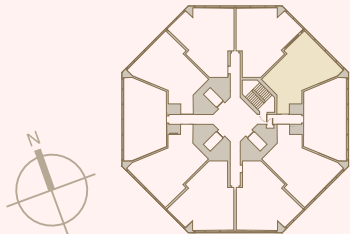
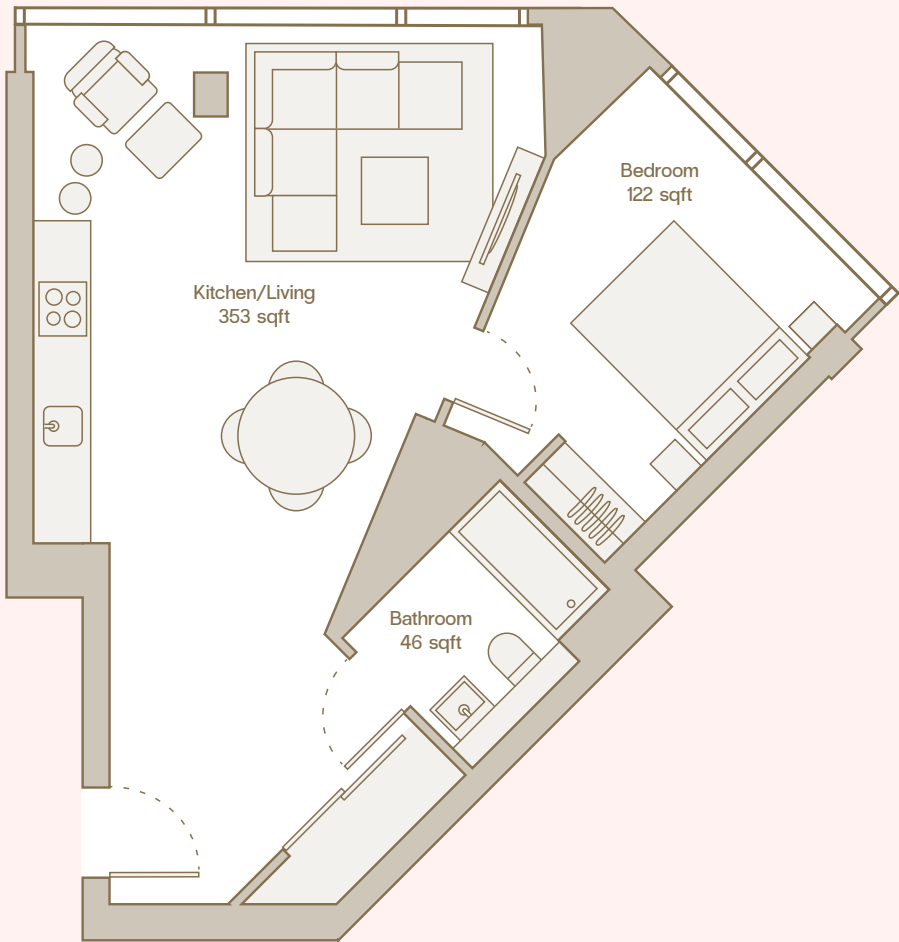
# 1 Bedroom



37-43

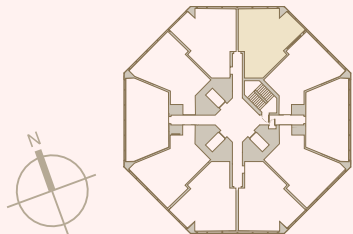
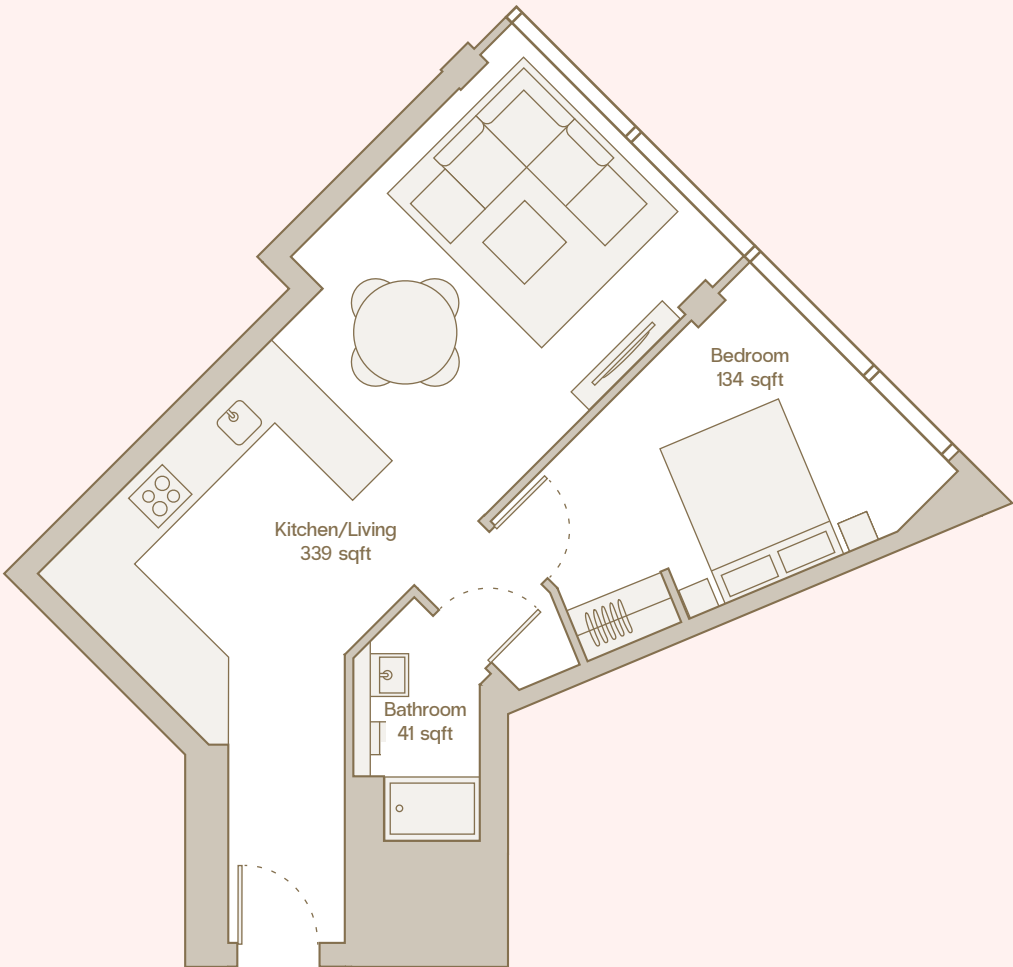
TYPE B LEVELS 37-43

Total Area	Kitchen/Living	Bedroom	Bathroom
583 sqft	353 sqft	122 sqft	46 sqft



TYPE C LEVELS 37-43

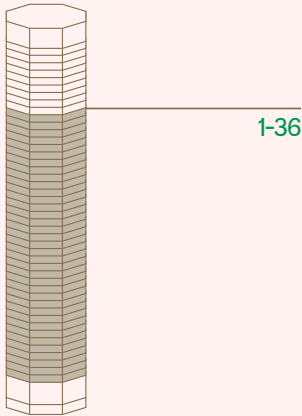
Total Area	Kitchen/Living	Bedroom	Bathroom
573 sqft	339 sqft	134 sqft	41 sqft





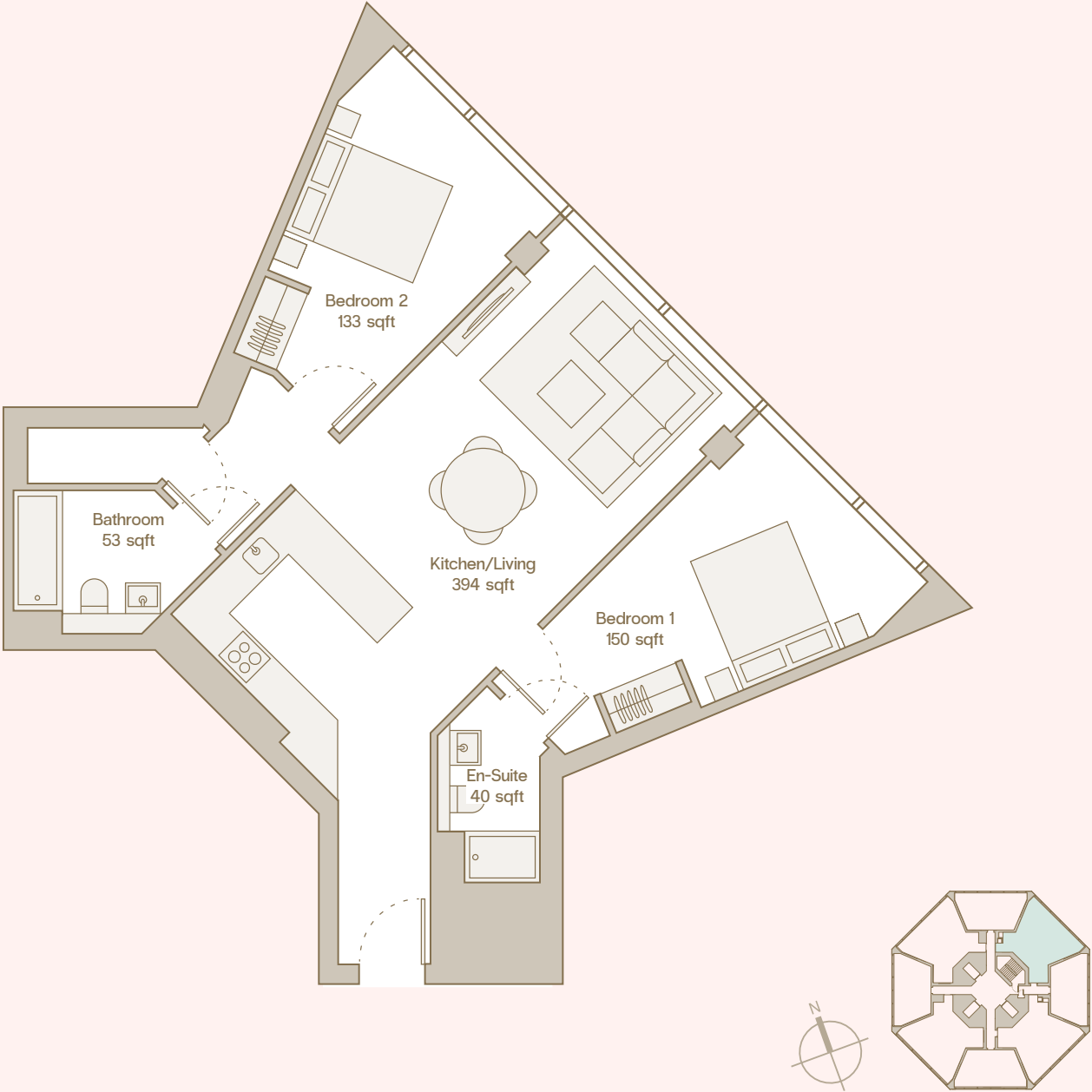
# 2 Bedroom

More room, more possibilities. A refined balance of style and space, these two-bedroom apartments offer generous open plan living area, premium finishes, and breathtaking city views. Perfect for sharing, hosting, or stretching out in comfort.



TYPE D - ALL 2 BEDROOMS

Total Area	Kitchen/Living	Bedroom 1	En-Suite	Bedroom 2	Bathroom
860 sqft	394 sqft	150 sqft	40 sqft	133 sqft	53 sqft

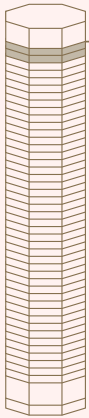


2 bedroom apartment



# Penthouse Collection

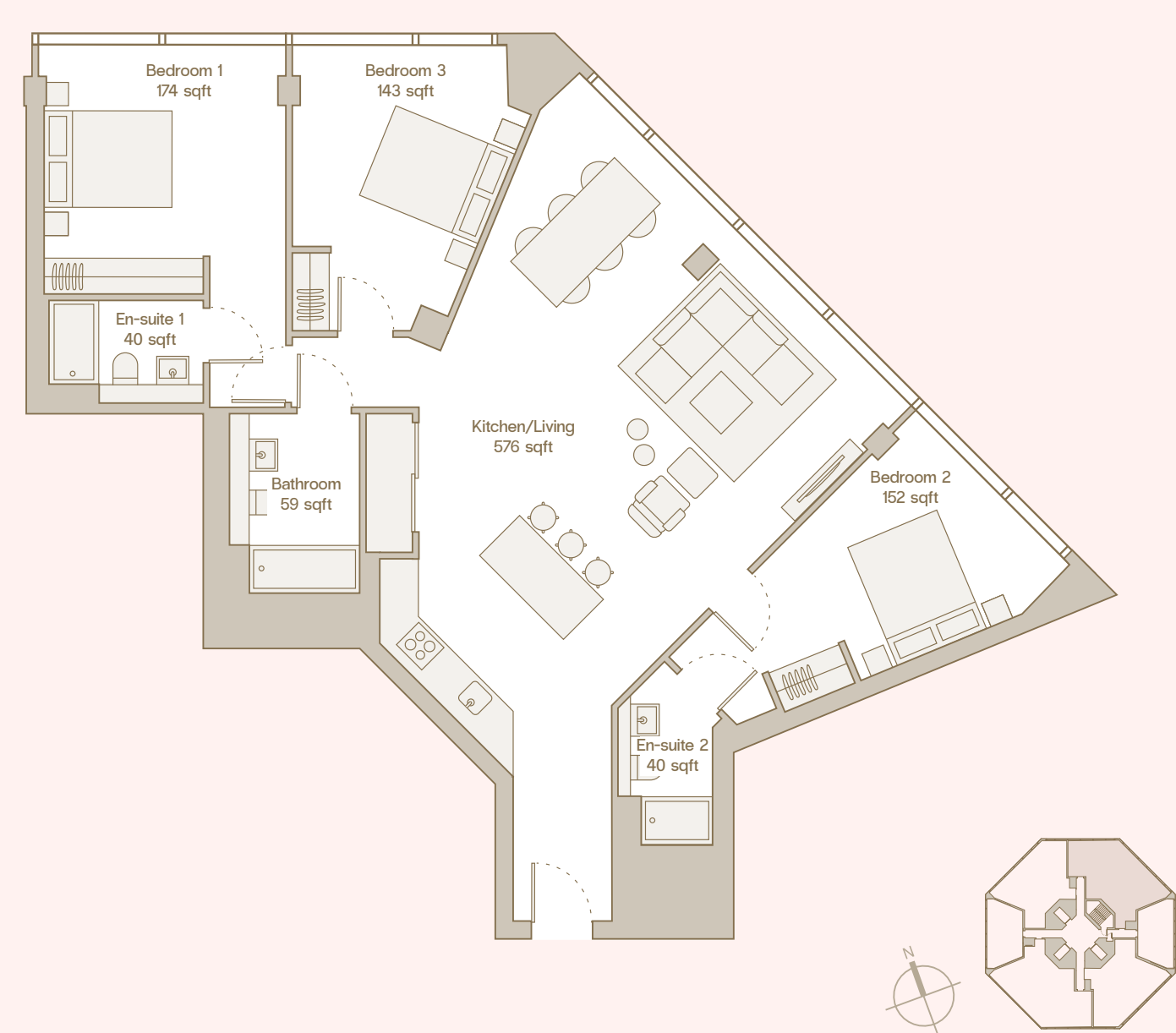
A home with a view, and room to grow. Designed for those who want space without compromise, the Penthouse Collection combines elegant design, panoramic outlooks, and an effortless connection to the city's best views.



44-45

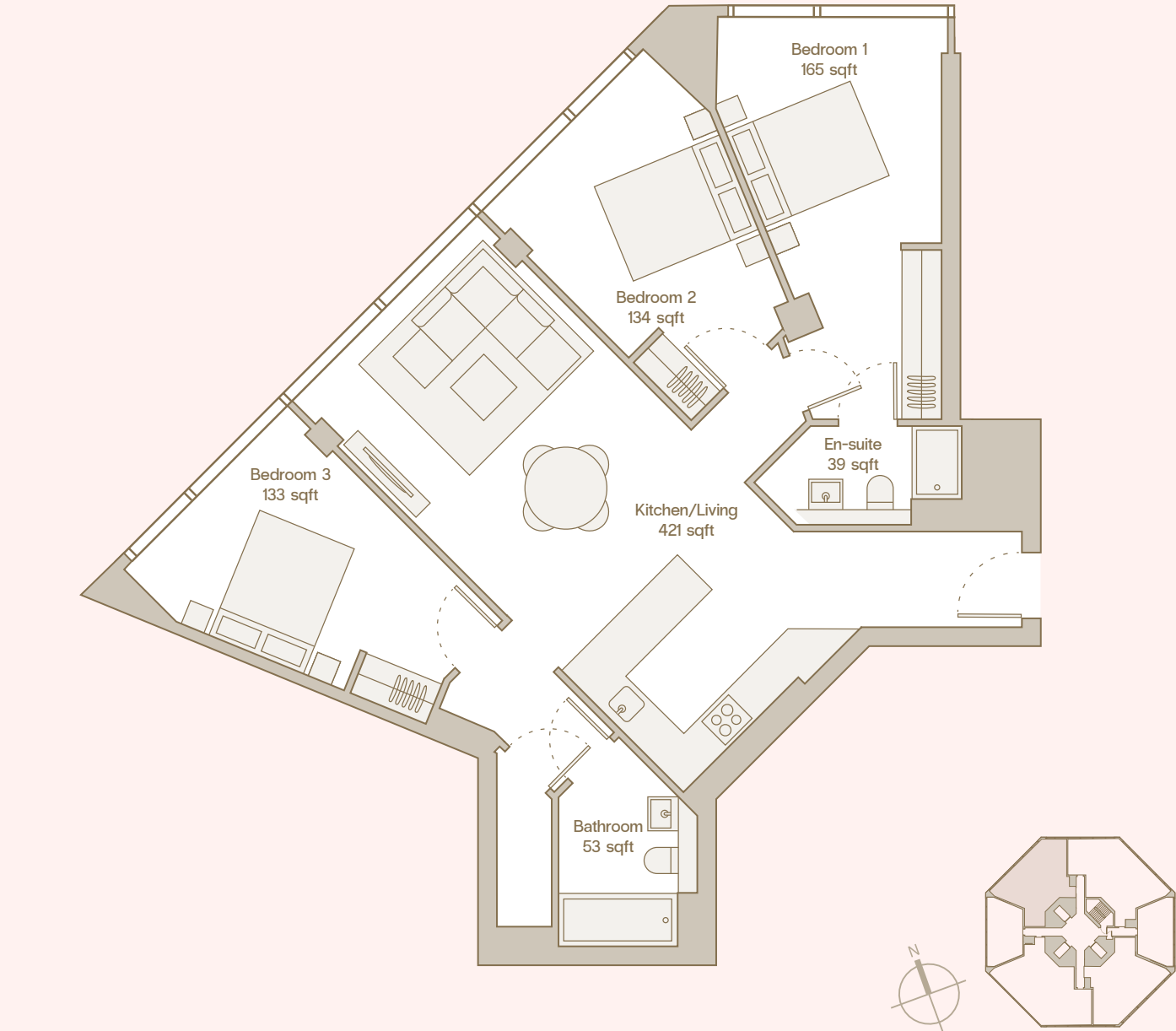
TYPE E

Total Area	Kitchen/Living	Bedroom 1	En-suite 1	Bedroom 2	En-suite 2	Bedroom 3	Bathroom
1292 sqft	576 sqft	174 sqft	40 sqft	152 sqft	40 sqft	143 sqft	59 sqft



TYPE F

Total Area	Kitchen/Living	Bedroom 1	En-Suite	Bedroom 2	Bedroom 3	Bathroom
1044 sqft	421 sqft	165 sqft	39 sqft	134 sqft	133 sqft	53 sqft







2 bedroom apartment



Each space is elegantly furnished by BoConcept - awarded Best Luxury Furniture & Homeware Brand in the World, 2022.









Homes with individuality, with each apartment enjoying a generous 13-metre facet of The Octagon.



1 bedroom apartment

## TH EXTRAS INCLUDED SIDE

Thoughtfully curated amenities designed to elevate everyday living. Enjoy access to the gym, co-working spaces, and stylish resident lounges perfect for socialising or unwinding. With on-site maintenance, and pet-friendly policies, our apartments combine comfort, convenience, and community.

Resident lounge 

Gym 

Skyline views 

Private dining 

Meeting rooms 

Guest suite 

Bicycle storage 

Co-working 

Reception 


Maintenance 

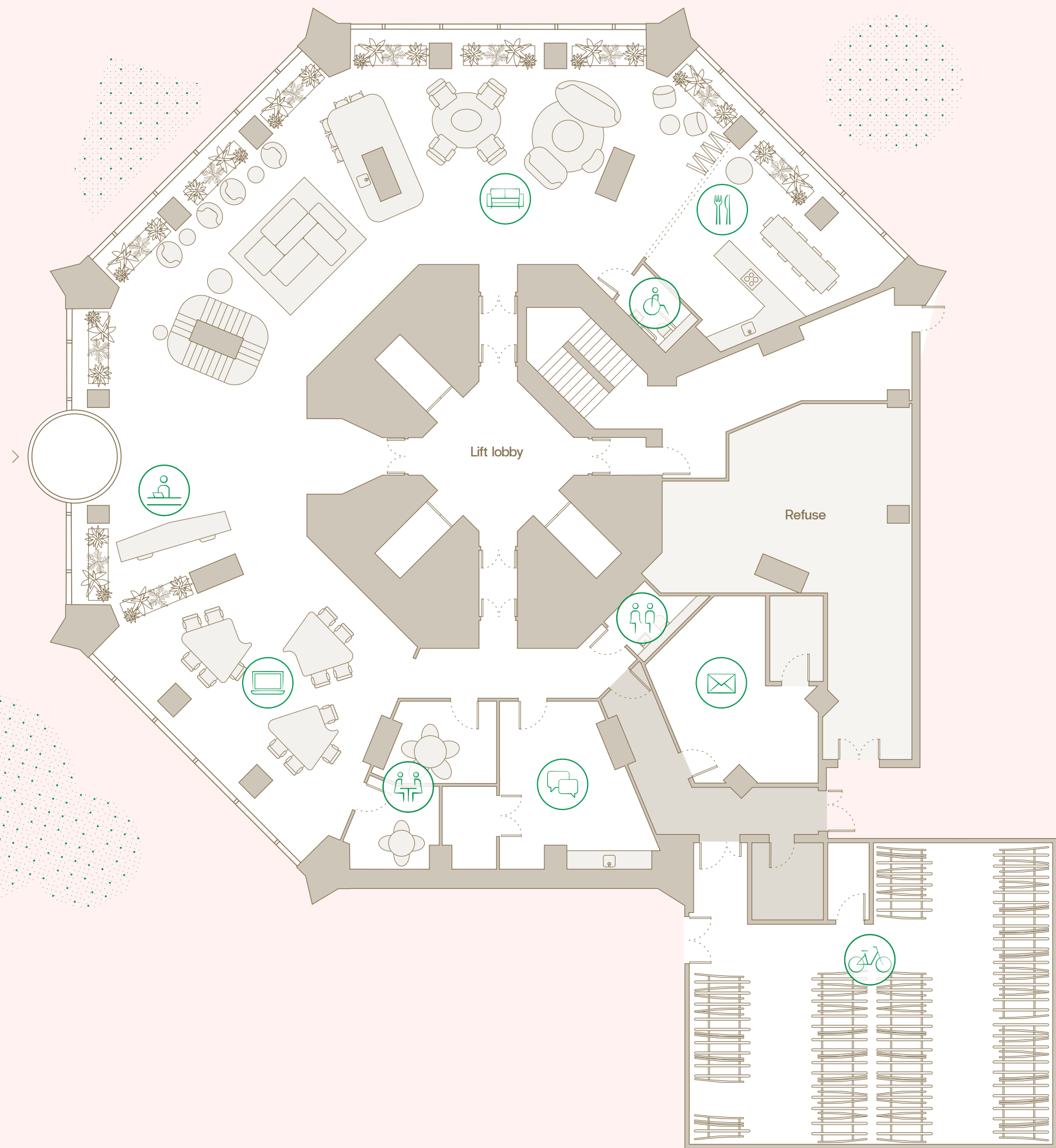


# Lower Ground Floor Amenities

Designed with comfort and style in mind, the interiors not only compliment the building’s unique design but also softens its bold edges.

Warm tones and rich textures define spaces for both getting work done and kicking back to relax. As you move from the work zones to the lounge areas, pops of colour and modern touches make the whole space feel fresh and inviting. You’ll spot iconic pieces from Danish favourites like &Tradition and Audo CPH, plus sleek Italian-designed furniture that ties it all together beautifully.

 Private dining	 Post room
 Lounge	 Cycle store
 Co-work	 WC
 Reception	 Accessible WC
 Meeting room	 Management office











Lounge and bar

Computer generated images are indicative only.



## THE WINE AND DINE SIDE

Enjoy the bookable private dining space - perfect for dinner parties, celebrations, or gatherings. Fitted out with a modern kitchen and elegant furnishings.



Private dining

Computer generated images are indicative only.

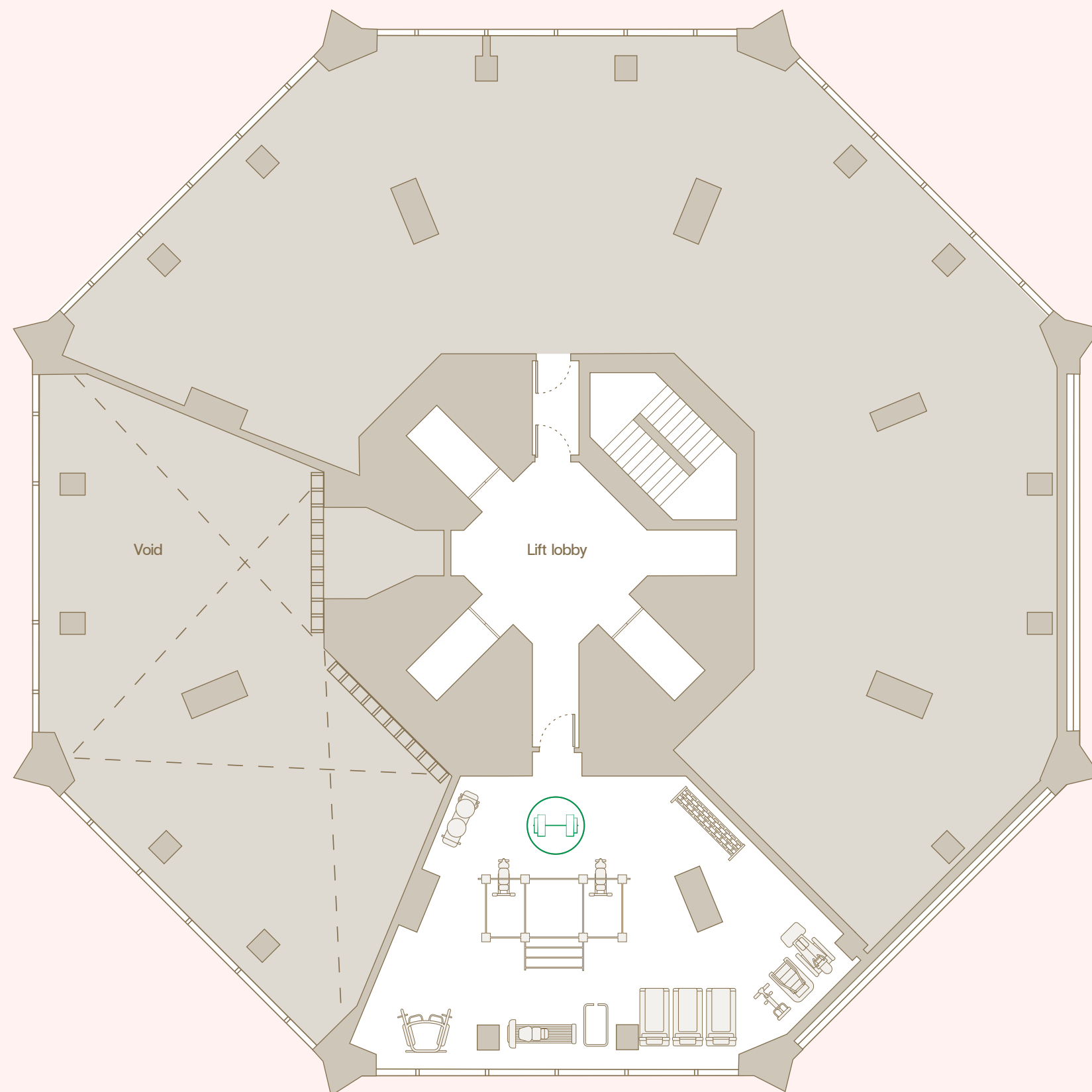


# Upper Ground Floor Amenity

The Octagon has partnered with Technogym to bring you a fully equipped gym that's perfect for every fitness level.

From immersive virtual training experiences on Excite Live Treadmill, Vario and Climb, to a wide range of free weights and HIIT training cardio products such as the Skillrun and Skillup. Take your spin and cycling to the next level using the Technogym Bike with a vast array of on-demand and live spin classes.

The complimentary Technogym App allows you to track all your Technogym workouts and any workouts outside the gym, as well as providing lots of training and wellness content.



Gym









# Ready to make your move?

Book a viewing today and meet our dedicated on-site team. Live in the heart of Birmingham and experience more sides to city living.

✉ [info@theoctagonbirmingham.co.uk](mailto:info@theoctagonbirmingham.co.uk)

🌐 [theoctagonbirmingham.co.uk](https://theoctagonbirmingham.co.uk)

📱 [theoctagonbirmingham](#)

Brought to you by CDL and managed by  
Allsop, creating exceptional homes.



**CITY  
DEVELOPMENTS  
LIMITED**

**allsop**

