



Highgrove Mews
Grays

£200,000



Highgrove Mews, Grays, RM17 6XD

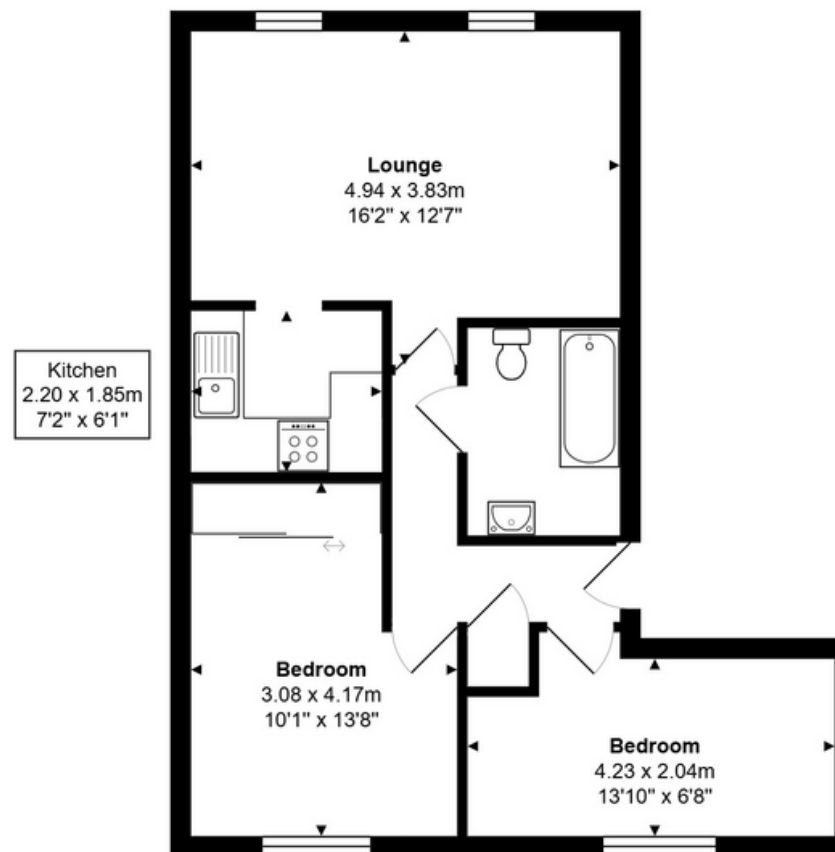
Situated in the popular Highgrove Mews development, this top-floor apartment offers a great opportunity for those looking to create their perfect home. While the property requires modernisation, it benefits from a bright and airy living room, loft area access and a gated covered carport offering excellent potential to add value and transform it into a stylish and contemporary space.

Commuting to London couldn't be easier! Grays C2C Train Station is just a short distance away, providing direct access to London Fenchurch Street in under 40 minutes. Perfect for busy professionals or city commuters.

With ongoing and planned developments in the area, this area is set to see exciting growth, making it an ideal investment for the future.

Energy Efficiency Rating		
	Current	Potential
Very energy efficient - lower running costs		
(92 plus) A		
(81-91) B		
(69-80) C		
(55-68) D	68	74
(39-54) E		
(21-38) F		
(1-20) G		
Not energy efficient - higher running costs		

Environmental Impact (CO ₂) Rating		
	Current	Potential
Very environmentally friendly - lower CO ₂ emissions		
(92 plus) A		
(81-91) B		
(69-80) C		
(55-68) D		63
(39-54) E	53	
(21-38) F		
(1-20) G		
Not environmentally friendly - higher CO ₂ emissions		



Total Area: 50.7 m² ... 546 ft²

Measurements are approximate for illustrative purposes only and may have been taken from the widest area
 Floorplan Copyright The Estate Agents Photographer
www.theestatesgentsphotographer.co.uk

209 Station Lane Hornchurch Essex RM12 6LL

01708 962678

hello@brickhouse.co.uk

brickhouse.co.uk

PROPERTY MISDESCRIPTIONS ACT 1991: The Agents has not tested any apparatus, equipment, fixtures and fittings, or services, so cannot verify that they are in working order or fit for the purpose. The buyer is advised to obtain verification from his or her Professional Buyer. References to the Tenure of the property are based on information supplied by the Vendor. The agents have not had sight of the title documents. The buyer is advised to obtain verification from their Solicitor. You are advised to check the availability of any property before travelling any distance to view.