

FLAT 22, GARRAWAY APARTMENTS EAST ACTON LANE LONDON, W3 7QG

£2,510 PER MONTH

Nestled on East Acton Lane in London, this charming new build house offers a modern living experience in a vibrant community. Spanning an impressive 732 square feet, the property was completed in 2022, ensuring that it boasts contemporary design and the latest amenities.

This delightful residence features two well-proportioned bedrooms and two stylish bathrooms, making it ideal for small families, couples, or professionals seeking a comfortable and convenient home. The layout is thoughtfully designed to maximise space and light, creating a welcoming atmosphere throughout.

One of the standout features of this property is its prime location. Just a six-minute walk from East Acton Station on the Central Line, residents will enjoy easy access to central London, with White City just one stop away. This makes commuting a breeze, whether for work or leisure.

R
rice resi

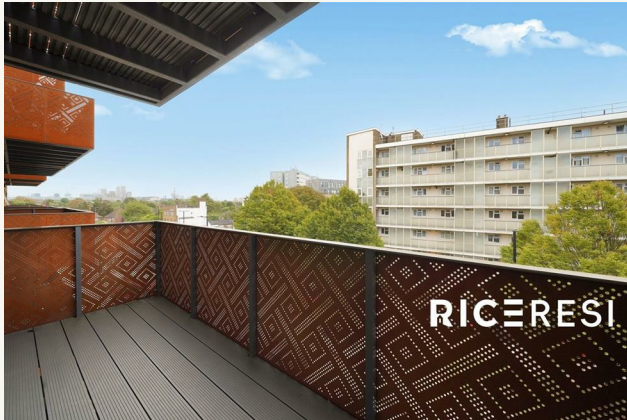
FLAT 22, GARRAWAY

Reception Room

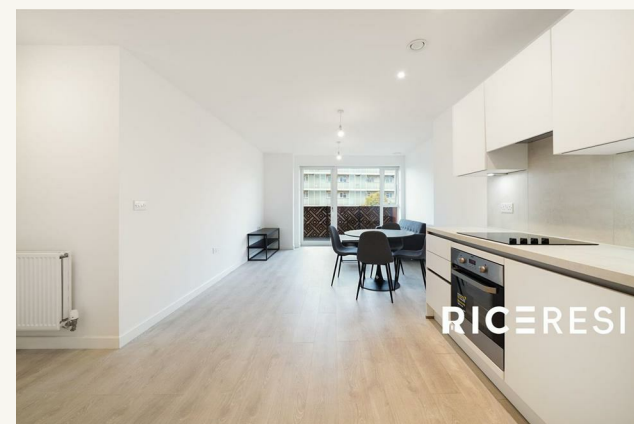
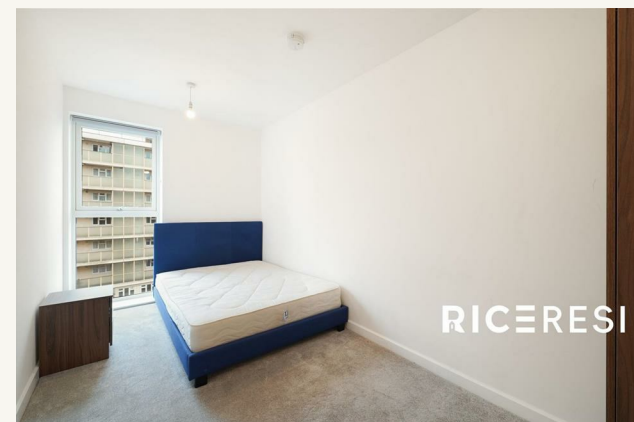
Bedroom 2

Master Bedroom/En-suite Bathroom

Family Bathroom



FLAT 22, GARRAWAY





RICERESI

FLAT 22, GARRAWAY

ADDITIONAL INFORMATION

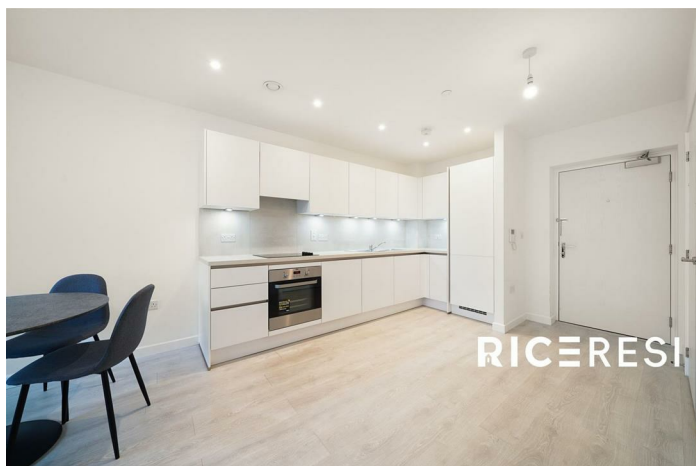
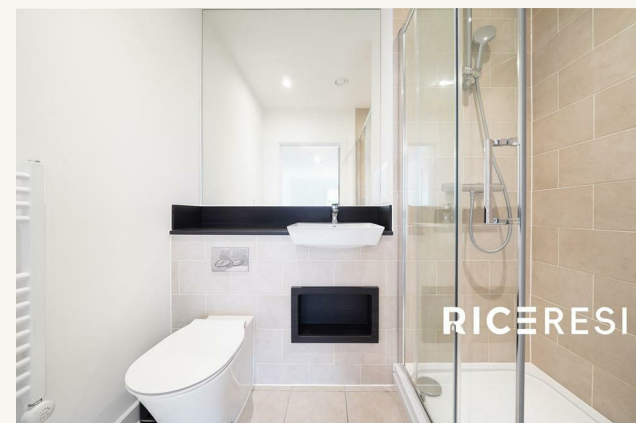
Local Authority – Ealing

Council Tax – Band E

Viewings – By Appointment Only

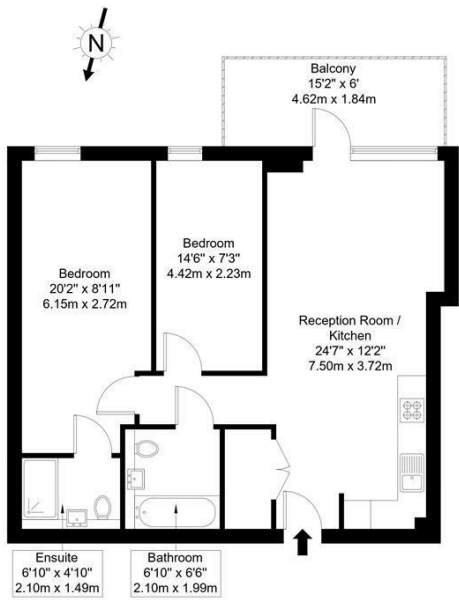
Floor Area – 731.95 sq ft

Tenure –



East Acton Lane, W3 7QG

Approx Gross Internal Area = 66.8 sq m / 719 sq ft
Balcony = 8.5 sq m / 91 sq ft
Total = 75.3 sq m / 810 sq ft

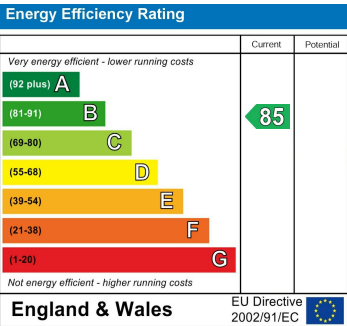
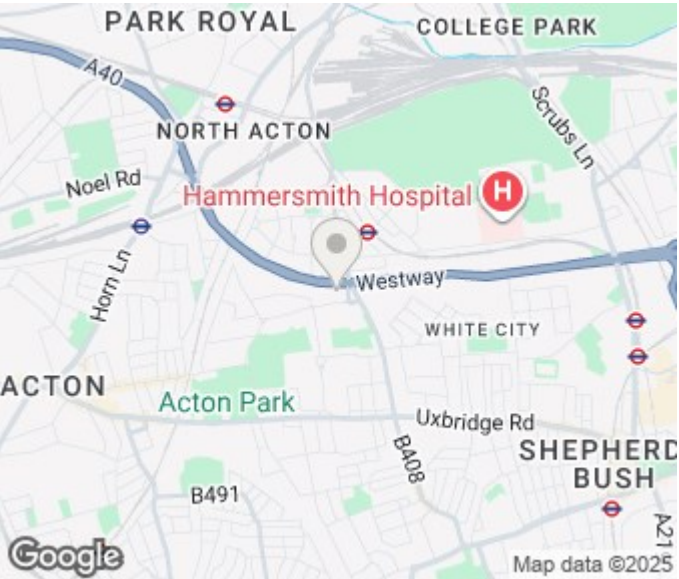


Third Floor

Ref :

Copyright **BLEU PLAN**

The Floor plan is not to scale and measurements and areas shown are approximate and therefore should be used for illustrative purposes only. The plan has been prepared in accordance with the RICS code of Measuring Practice and whilst we have confidence in the information produced it must not be relied on. Maximum lengths and widths are represented on the floor plan. If there is any aspect of particular importance, you should carry out or commission your own inspection of the property.
Copyright © BleuPlan



Agents Note: Whilst every care has been taken to prepare these particulars, they are for guidance purposes only. All measurements are approximate and are for general guidance purposes only and whilst every care has been taken to ensure their accuracy, they should not be relied upon and potential buyers/tenants are advised to recheck the measurements

RICE Resi
Unit 6 12 Pepper Street
London
E14 9RP

020 3006 6995
hello@riceresi.com
www.riceresi.com

