

APARTMENT 33 4 GOWING HOUSE, DRAPERS YARD LONDON, SW18 1SZ

£3,890 PER MONTH

Ram Quarter is the heart of a community that is infused with modern culture in the rich heritage of London's brewing royalty. We are perfectly positioned to be a champion of co-working, fine and casual dining with bars, cafés, restaurants, games bars and a destination designed to embrace outside space.

Ram Quarter in Wandsworth is an exciting new residential and retail quarter, combining contemporary living with iconic heritage at the historic Young's brewery site.

Ram Quarter apartments offer views of the river, gardens, historic buildings and public piazzas. Step outside for shopping and dining on the doorstep, the private space of the residents' gardens, or the calm of a wander by the Wandle, which meanders through the heart of the neighbourhood.

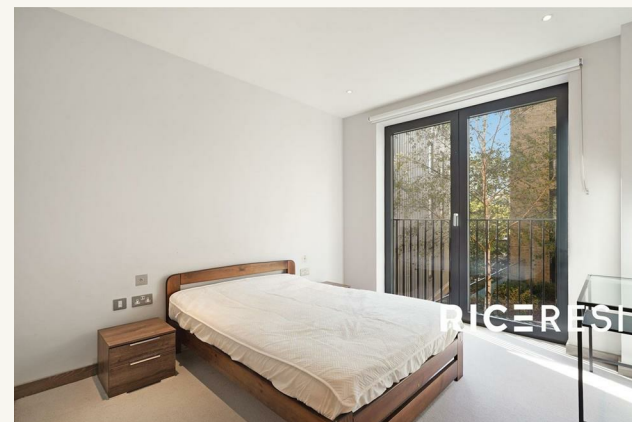
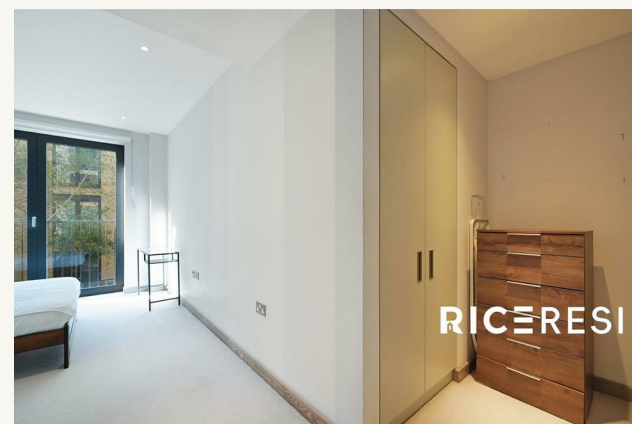
R
rice resi

APARTMENT 33 4 GOWING

- 3 mins away from Wandsworth shopping center
- 3 Bedrooms 2 Bathrooms



APARTMENT 33 4 GOWING





RICERESI

APARTMENT 33 4 GOWING

ADDITIONAL INFORMATION

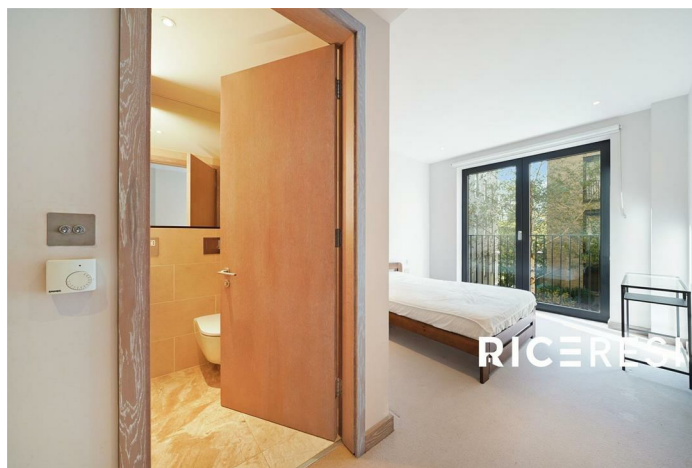
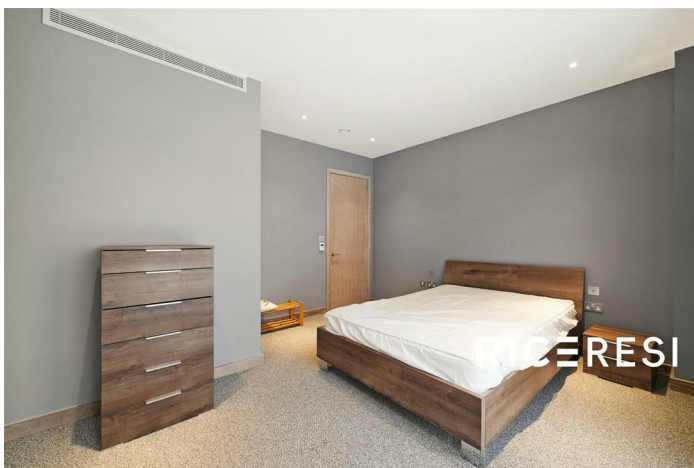
Local Authority –

Council Tax – Band D

Viewings – By Appointment Only

Floor Area – 1162.51 sq ft

Tenure –

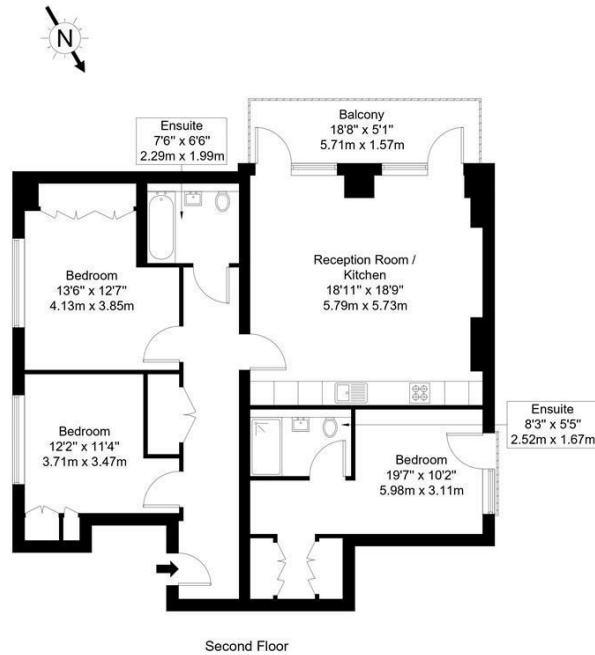


Drapers Yard, SW18 1SZ

Approx Gross Internal Area = 106.4 sq m / 1145 sq ft

Balcony = 9 sq m / 97 sq ft

Total = 115.4 sq m / 1242 sq ft




Ref :

Copyright **BLEU PLAN**

The Floor plan is not to scale and measurements and areas shown are approximate and therefore should be used for illustrative purposes only. The plan has been prepared in accordance with the RICS code of Measuring Practice and whilst we have confidence in the information produced it must not be relied on. Maximum lengths and widths are represented on the floor plan. If there is any aspect of particular importance, you should carry out or commission your own inspection of the property.
Copyright © BleuPlan



Energy Efficiency Rating		
	Current	Potential
Very energy efficient - lower running costs		
(92 plus) A	88	
(81-91) B		
(69-80) C		
(55-68) D		
(39-54) E		
(21-38) F		
(1-20) G		
Not energy efficient - higher running costs		
England & Wales		EU Directive 2002/91/EC 

Agents Note: Whilst every care has been taken to prepare these particulars, they are for guidance purposes only. All measurements are approximate and are for general guidance purposes only and whilst every care has been taken to ensure their accuracy, they should not be relied upon and potential buyers/tenants are advised to recheck the measurements

RICE Resi
Unit 6 12 Pepper Street
London
E14 9RP

020 3006 6995
hello@riceresi.com
www.riceresi.com

R
rice resi