

FLAT 74, IRIS HOUSE 2 CEDRUS AVENUE SOUTHALL, UB1 1GA

£2,080 PER MONTH

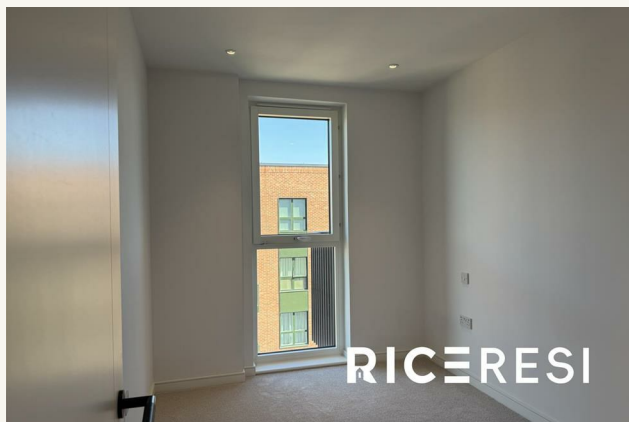
Welcome to this stunning flat located on Cedrus Avenue in Southall, part of the prestigious Green Quarter development by St. George, one of the largest projects in West London. This contemporary property, built in 2023, offers a modern living experience with a focus on community and convenience.

Spanning an impressive 657 square feet, this top-floor flat features two well-proportioned bedrooms and two stylish bathrooms, making it ideal for professionals, couples, or small families. The open-plan reception room provides a bright and airy space, perfect for relaxation or entertaining guests.

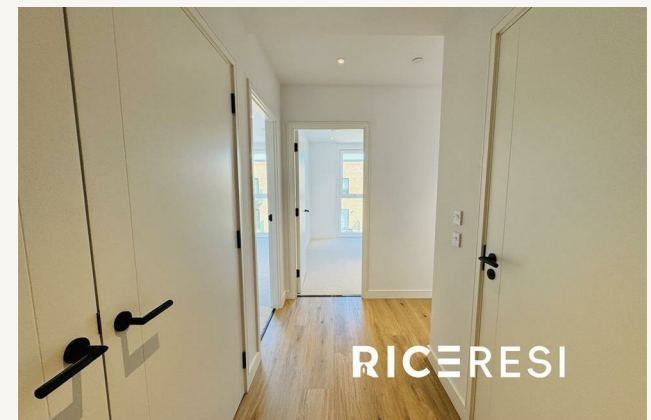
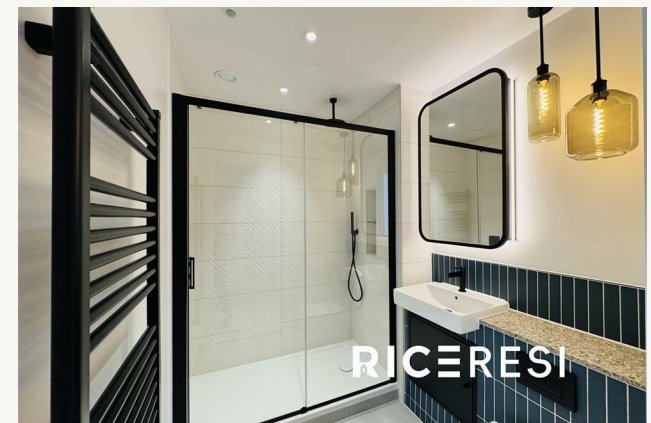
Residents of the Green Quarter enjoy a vibrant community lifestyle, complete with beautifully landscaped gardens, a dedicated concierge service, and a fully equipped gym. The development is designed to foster a sense of belonging, with amenities that cater to your every need.

R
rice resi

FLAT 74, IRIS HOUSE 2 CEDRUS



FLAT 74, IRIS HOUSE 2 CEDRUS





RICERESI

ADDITIONAL INFORMATION

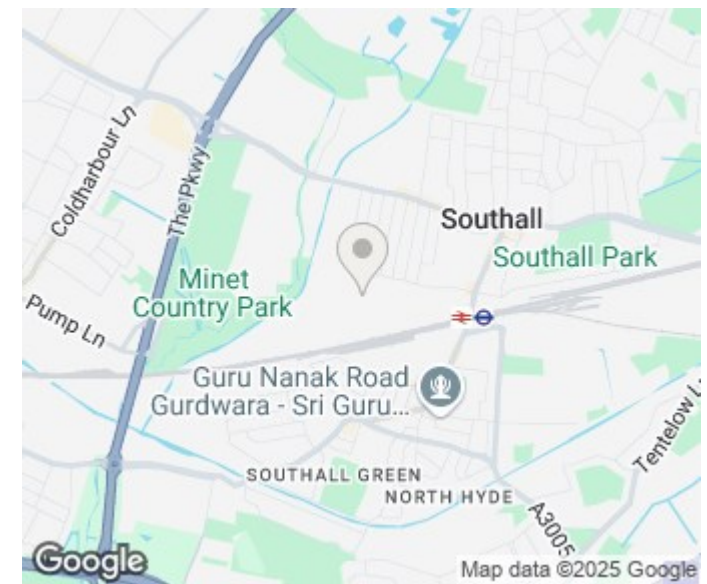
Local Authority –

Council Tax – Band New Build

Viewings – By Appointment Only

Floor Area – 656.60 sq ft

Tenure –



Energy Efficiency Rating		
	Current	Potential
Very energy efficient - lower running costs		
(92 plus) A		
(81-91) B	84	
(69-80) C		
(55-68) D		
(39-54) E		
(21-38) F		
(1-20) G		
Not energy efficient - higher running costs		
England & Wales	EU Directive 2002/91/EC	

Agents Note: Whilst every care has been taken to prepare these particulars, they are for guidance purposes only. All measurements are approximate and are for general guidance purposes only and whilst every care has been taken to ensure their accuracy, they should not be relied upon and potential buyers/tenants are advised to recheck the measurements

RICE Resi
Unit 6 12 Pepper Street
London
E14 9RP

020 3006 6995
hello@riceresi.com
www.riceresi.com

