



Price

£1,600 PCM

Fees Apply



Available 23/05/25

**Dreadnought Avenue
Minster On Sea ME12**

Wards
Helping you move forwards



Main Features

- Semi-detached family home
- En-suite bathroom to main bedroom
- Driveway
- Ideally located for reputable schools
- Large lounge and separate dining room
- Available immediately



Deposit required is £1,846.15
Swale District - Council Tax Band Tax Band D

Renting a property is a big commitment and we recommend that you visit the local authority website and these websites which offer helpful information and advice about letting

www.gov.uk/government/publications/how-to-rent

www.gov.uk/private-renting

www.wardsofkent.co.uk/renting/tenancy-fees-individuals/

www.gov.uk/green-deal-energy-saving-measures

Call Swale 01795 591916 ■ wardsofkent.co.uk

IMPORTANT INFORMATION: Please contact our Lettings Team who will confirm the total costs involved in renting this property. For clarification, we wish to inform the prospective tenant that we have prepared these details as a general guide. The agent has not carried out a detailed survey nor tested the services, appliances, or specific fittings (unless otherwise stated), and no warranty can be given as to their condition. All room measurements are taken at floor level. We strongly recommend that all the information which we provide about the property is verified by yourself and your advisers. The contents of this publication are © Wards, 2015. Wards is a trading name of Arun Estates Limited Registered in England No. 2597969

Accommodation

Porch

Lounge 7.33m x 4.47m

Dining Room 4.63m x 2.74m

Kitchen 2.42m x 2.79m

Landing

Bedroom 1 5.07m x 2.81m

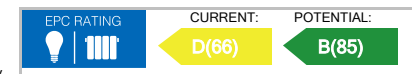
En-suite Bathroom 2.06m x 2.80m

Bedroom 2 3.34m x 2.80m

Bedroom 3 2.87m x 2.80m

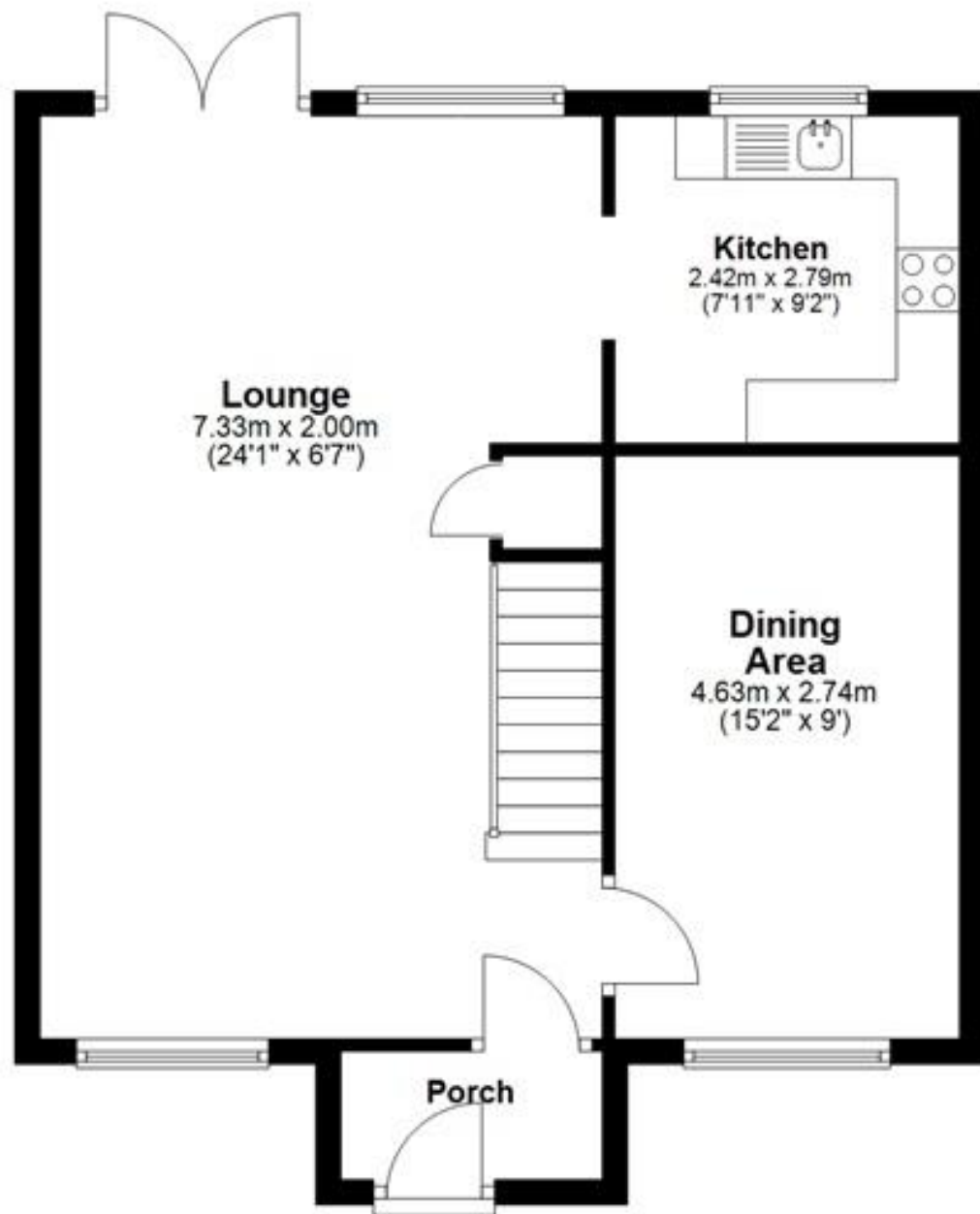
Bedroom 4 2.13m x 1.81m

Shower Room 1.93m x 1.81m



Ground Floor

Approx. 55.5 sq. metres (597.8 sq. feet)



First Floor

Approx. 54.1 sq. metres (582.1 sq. feet)

