



Price

£1,600 PCM

Fees Apply



Available 30/05/25

**Bellflower Avenue
Minster On Sea ME12**

Wards
Helping you move forwards



Main Features

- End of terrace family home
- Modern throughout
- En-suite Shower Room & Cloakroom
- Garage & off-street parking
- Private garden
- Spacious Kitchen/Diner



Deposit required is £1,846.15
Swale District - Council Tax Band C

Renting a property is a big commitment and we recommend that you visit the local authority website and these websites which offer helpful information and advice about letting

www.gov.uk/government/publications/how-to-rent

www.gov.uk/private-renting

www.wardsofkent.co.uk/renting/tenancy-fees-individuals/

www.gov.uk/green-deal-energy-saving-measures

Call Swale 01795 591916 ■ wardsofkent.co.uk

IMPORTANT INFORMATION: Please contact our Lettings Team who will confirm the total costs involved in renting this property. For clarification, we wish to inform the prospective tenant that we have prepared these details as a general guide. The agent has not carried out a detailed survey nor tested the services, appliances, or specific fittings (unless otherwise stated), and no warranty can be given as to their condition. All room measurements are taken at floor level. We strongly recommend that all the information which we provide about the property is verified by yourself and your advisers. The contents of this publication are © Wards, 2015. Wards is a trading name of Arun Estates Limited Registered in England No. 2597969

Accommodation

Lounge 5.45m x 3.39m

Kitchen/Diner 2.89m x 4.22m

Cloakroom 1.57m x 0.97m

Landing

Bedroom 1 3.16m x 3.55m

En-suite Shower Room 1.49m x 1.46m

Bedroom 2 3.55m x 2.37m

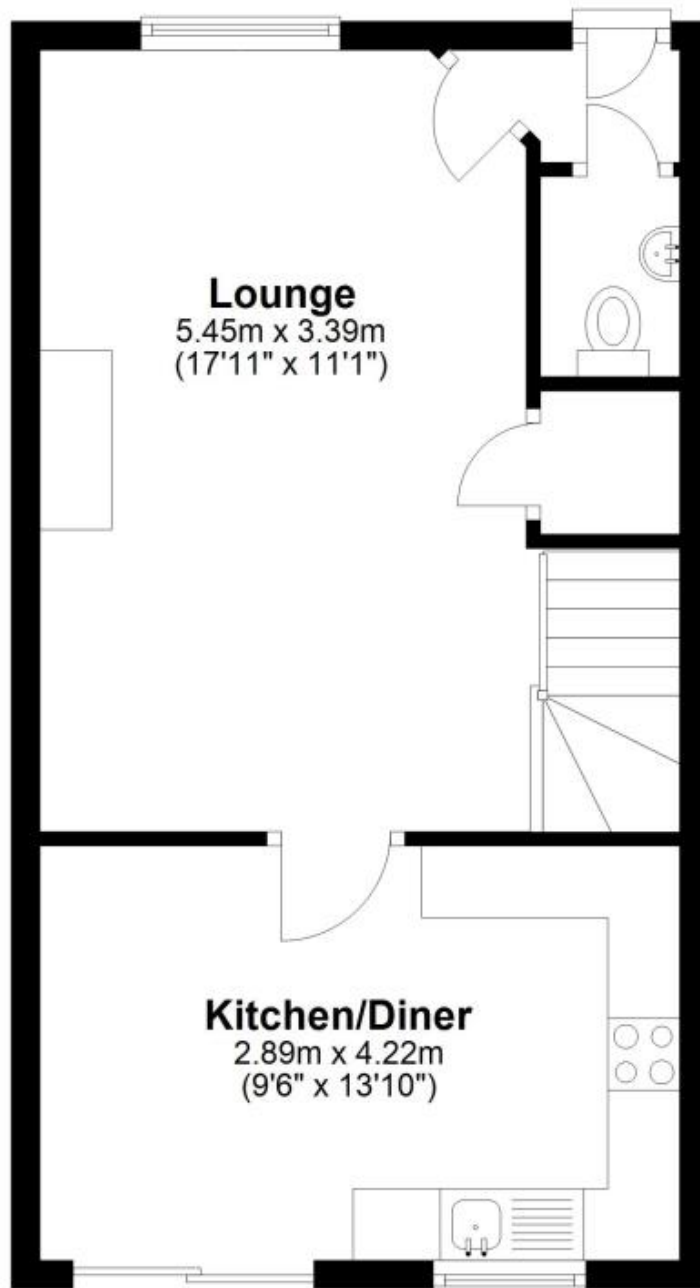
Bedroom 3 2.55m x 1.81m

Bathroom 2.36m x 1.57m



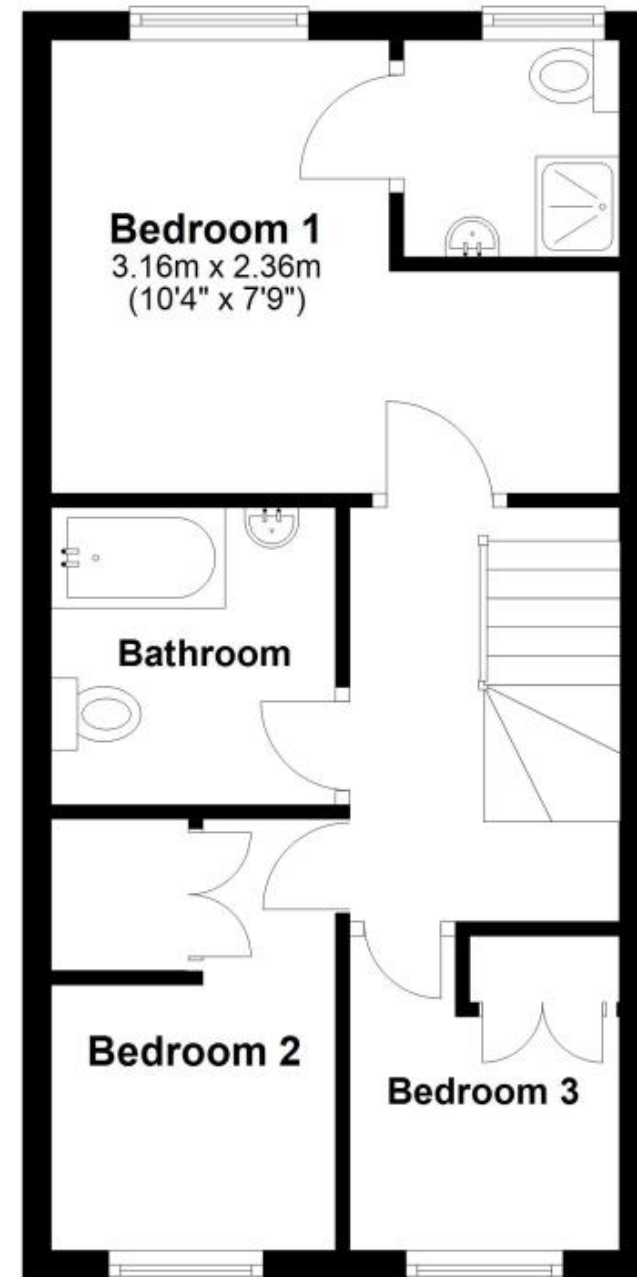
Ground Floor

Approx. 37.1 sq. metres (399.5 sq. feet)



First Floor

Approx. 34.4 sq. metres (370.5 sq. feet)



Total area: approx. 71.5 sq. metres (770.1 sq. feet)