

Available with  
no deposit



## Price

£1,200 PCM

Fees Apply

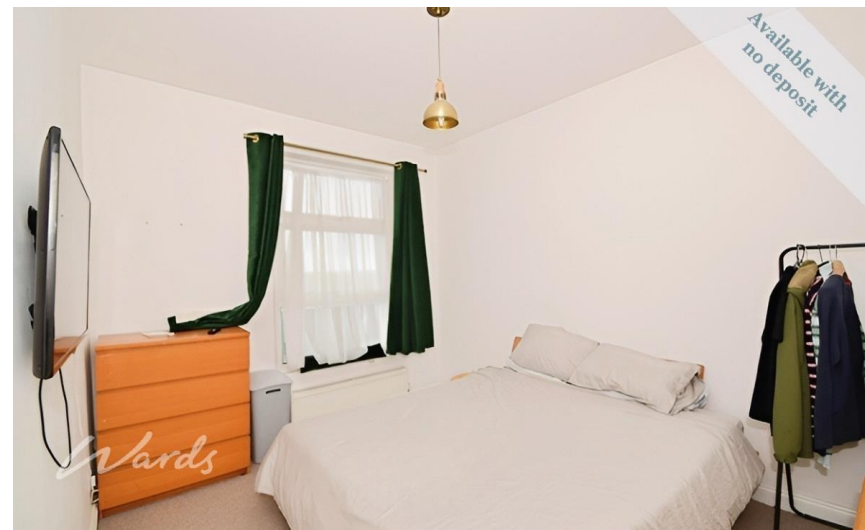
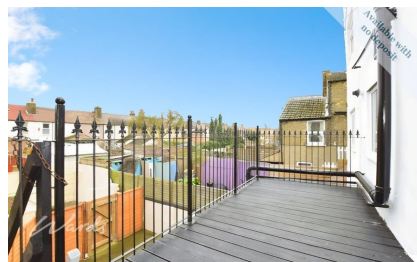
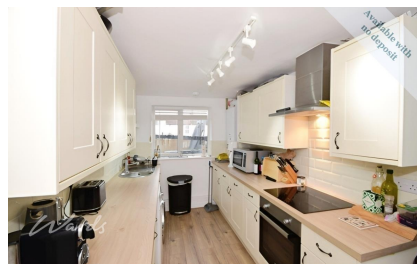


Available 31/05/25

Marine Parade  
Sheerness ME12

*Wards*

Helping you move forwards



## Main Features

Split level three bedroom flat

Courtyard area

Balcony

Family bathroom

Separate shower room

Loft space/room



**Deposit required is £1,384.62**  
**Swale District - Council Tax Band Tax Band A**

Renting a property is a big commitment and we recommend that you visit the local authority website and these websites which offer helpful information and advice about letting

[www.gov.uk/government/publications/how-to-rent](http://www.gov.uk/government/publications/how-to-rent)

[www.gov.uk/private-renting](http://www.gov.uk/private-renting)

[www.wardsofkent.co.uk/renting/tenancy-fees-individuals/](http://www.wardsofkent.co.uk/renting/tenancy-fees-individuals/)

[www.gov.uk/green-deal-energy-saving-measures](http://www.gov.uk/green-deal-energy-saving-measures)

**Call Swale 01795 591916 ■ [wardsofkent.co.uk](http://wardsofkent.co.uk)**

IMPORTANT INFORMATION: Please contact our Lettings Team who will confirm the total costs involved in renting this property. For clarification, we wish to inform the prospective tenant that we have prepared these details as a general guide. The agent has not carried out a detailed survey nor tested the services, appliances, or specific fittings (unless otherwise stated), and no warranty can be given as to their condition. All room measurements are taken at floor level. We strongly recommend that all the information which we provide about the property is verified by yourself and your advisers. The contents of this publication are © Wards, 2015. Wards is a trading name of Arun Estates Limited Registered in England No. 2597969

## Accommodation

Hallway

Lounge area 3.84 x 3.56

Dining area 3.18 x 2.80

Kitchen 3.97 x 2.14

Balcony

Landing

Bedroom 1 3.81 x 3.43

Bedroom 2 3.66 x 3.00

Bedroom 3 2.92 x 2.11

Bathroom 2.16 x 1.70

Shower room 1.68 x 1.14



