



Price

£1,850 PCM

Fees Apply



Available 17/05/25

**Bicknor Lane Bicknor
ME9**

Wards
Helping you move forwards



Main Features

- Beautiful, detached family home
- Very peaceful, remote village location
- Three bedrooms on the ground floor
- En-Suite shower room
- Private garden with stunning views
- Recently undergone refurbishment



Deposit required is £2,134.62
Maidstone District - Council Tax Band Tax Band G

Renting a property is a big commitment and we recommend that you visit the local authority website and these websites which offer helpful information and advice about letting

www.gov.uk/government/publications/how-to-rent

www.gov.uk/private-renting

www.wardsofkent.co.uk/renting/tenancy-fees-individuals/

www.gov.uk/green-deal-energy-saving-measures

Call Swale 01795 591916 ■ wardsofkent.co.uk

IMPORTANT INFORMATION: Please contact our Lettings Team who will confirm the total costs involved in renting this property. For clarification, we wish to inform the prospective tenant that we have prepared these details as a general guide. The agent has not carried out a detailed survey nor tested the services, appliances, or specific fittings (unless otherwise stated), and no warranty can be given as to their condition. All room measurements are taken at floor level. We strongly recommend that all the information which we provide about the property is verified by yourself and your advisers. The contents of this publication are © Wards, 2015. Wards is a trading name of Arun Estates Limited Registered in England No. 2597969

Accommodation

Entrance Hall

Bedroom 1 5.19m x 5.59m

En-Suite Shower Room 1.51m x 1.85m

Bedroom 2 1.94m x 3.19m

Bedroom 3 3.04m x 2.66m

Bathroom

Lounge Area 4.71m x 8.64m

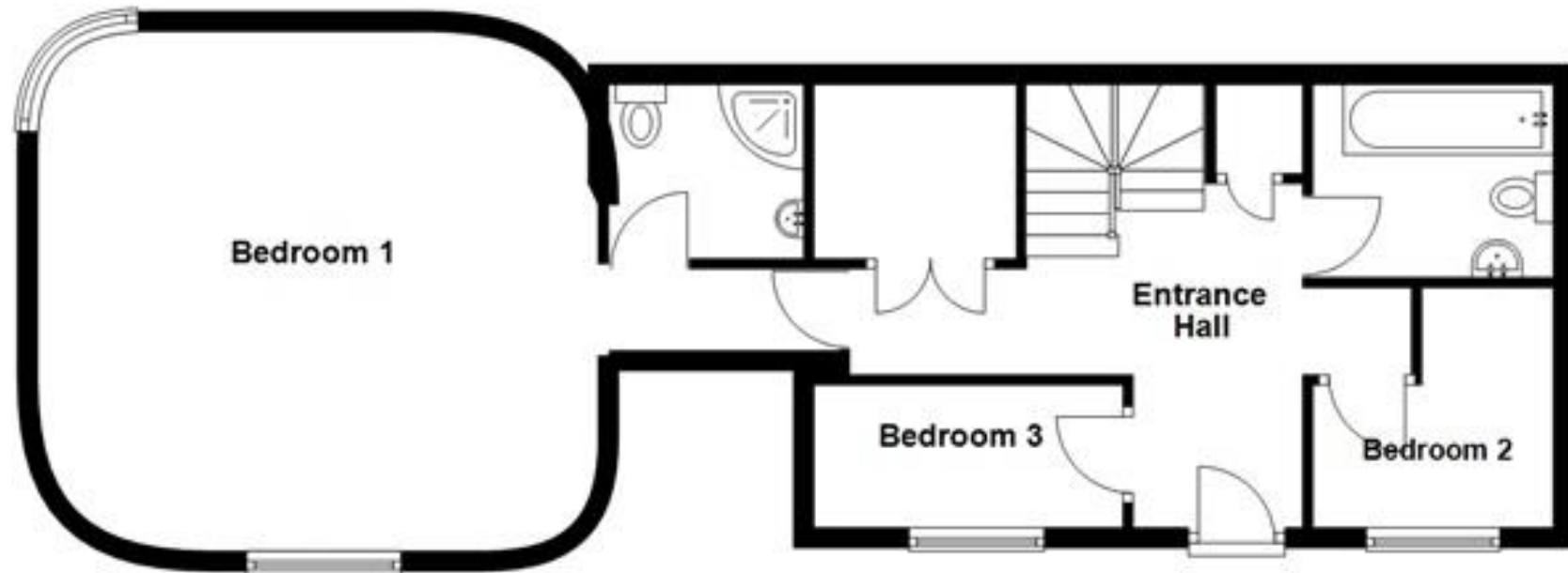
Kitchen 5.25m x 5.30m

EPC RATING		CURRENT:	POTENTIAL:



Ground Floor

Approx. 65.5 sq. metres (704.8 sq. feet)



First Floor

Approx. 63.1 sq. metres (679.3 sq. feet)

