



Price

£1,300 PCM

Fees Apply



Available 30/04/25

Jefferson Road
Sheerness ME12

Wards
Helping you move forwards



Main Features

- Mid-terrace family home
- Completed to a modern standard throughout
- Separate lounge & dining room
- Private rear garden
- Third bedroom through the second
- Ideally located for reputable schools



Deposit required is £1,500.00
Swale District - Council Tax Band Tax Band A

Renting a property is a big commitment and we recommend that you visit the local authority website and these websites which offer helpful information and advice about letting

www.gov.uk/government/publications/how-to-rent

www.gov.uk/private-renting

www.wardsofkent.co.uk/renting/tenancy-fees-individuals/

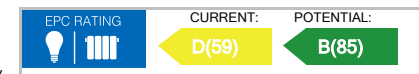
www.gov.uk/green-deal-energy-saving-measures

Call Swale 01795 591916 ■ wardsofkent.co.uk

IMPORTANT INFORMATION: Please contact our Lettings Team who will confirm the total costs involved in renting this property. For clarification, we wish to inform the prospective tenant that we have prepared these details as a general guide. The agent has not carried out a detailed survey nor tested the services, appliances, or specific fittings (unless otherwise stated), and no warranty can be given as to their condition. All room measurements are taken at floor level. We strongly recommend that all the information which we provide about the property is verified by yourself and your advisers. The contents of this publication are © Wards, 2015. Wards is a trading name of Arun Estates Limited Registered in England No. 2597969

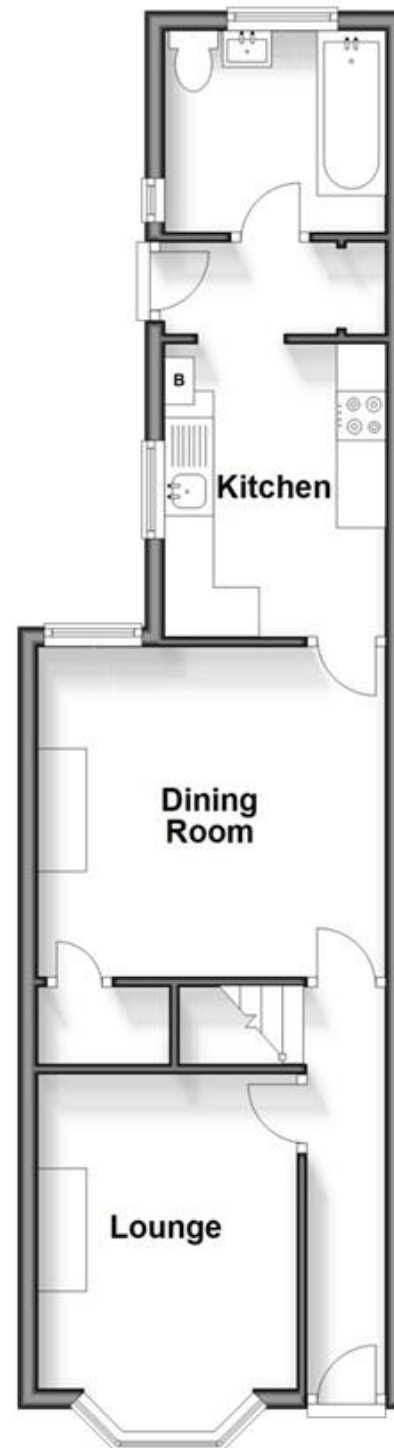
Accommodation

- Entrance Hallway**
- Lounge** 3.74m x 3.23m
- Dining Room** 3.66m x 3.36m
- Kitchen** 2.21m x 2.14m
- Inner Lobby**
- Bathroom** 2.21m x 2.14m
- Bedroom 1** 3.76m x 3.23m
- Bedroom 2** 3.74m x 3.36m
- Bedroom 3** 3.05m x 2.24m



Split Level Ground Floor

Approx. 41.3 sq. metres (444.2 sq. feet)



Split Level First Floor

Approx. 33.9 sq. metres (364.6 sq. feet)

