



Price

£1,500 PCM

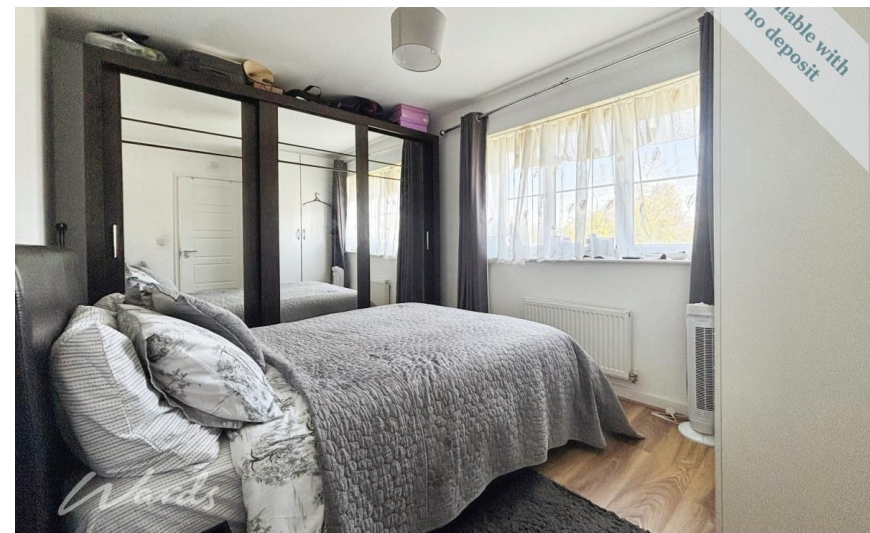
Fees Apply



Available 27/03/25

**Stede Avenue
Sittingbourne ME10**

Wards
Helping you move forwards



Main Features

- Semi-detached family home
- Modern throughout
- Driveway
- Bathroom, en-suite & downstairs cloakroom
- Good motorway links
- Available with no deposit



Deposit required is £1,730.77
- Council Tax Band Tax Band D

Renting a property is a big commitment and we recommend that you visit the local authority website and these websites which offer helpful information and advice about letting

www.gov.uk/government/publications/how-to-rent

www.gov.uk/private-renting

www.wardsofkent.co.uk/renting/tenancy-fees-individuals/

www.gov.uk/green-deal-energy-saving-measures

Call Swale 01795 591916 ■ wardsofkent.co.uk

IMPORTANT INFORMATION: Please contact our Lettings Team who will confirm the total costs involved in renting this property. For clarification, we wish to inform the prospective tenant that we have prepared these details as a general guide. The agent has not carried out a detailed survey nor tested the services, appliances, or specific fittings (unless otherwise stated), and no warranty can be given as to their condition. All room measurements are taken at floor level. We strongly recommend that all the information which we provide about the property is verified by yourself and your advisers. The contents of this publication are © Wards, 2015. Wards is a trading name of Arun Estates Limited Registered in England No. 2597969

Accommodation

Entrance Hallway

Lounge/Diner 4.94m x 4.81m

Kitchen 3.95m x 2.52m

Cloakroom 1.76m x 0.83m

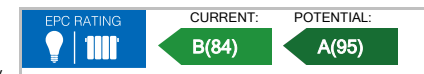
Bedroom 1 2.79m x 3.65m

En-Suite Shower Room 2.84m x 1.02m

Bedroom 2 3.56m x 2.18m

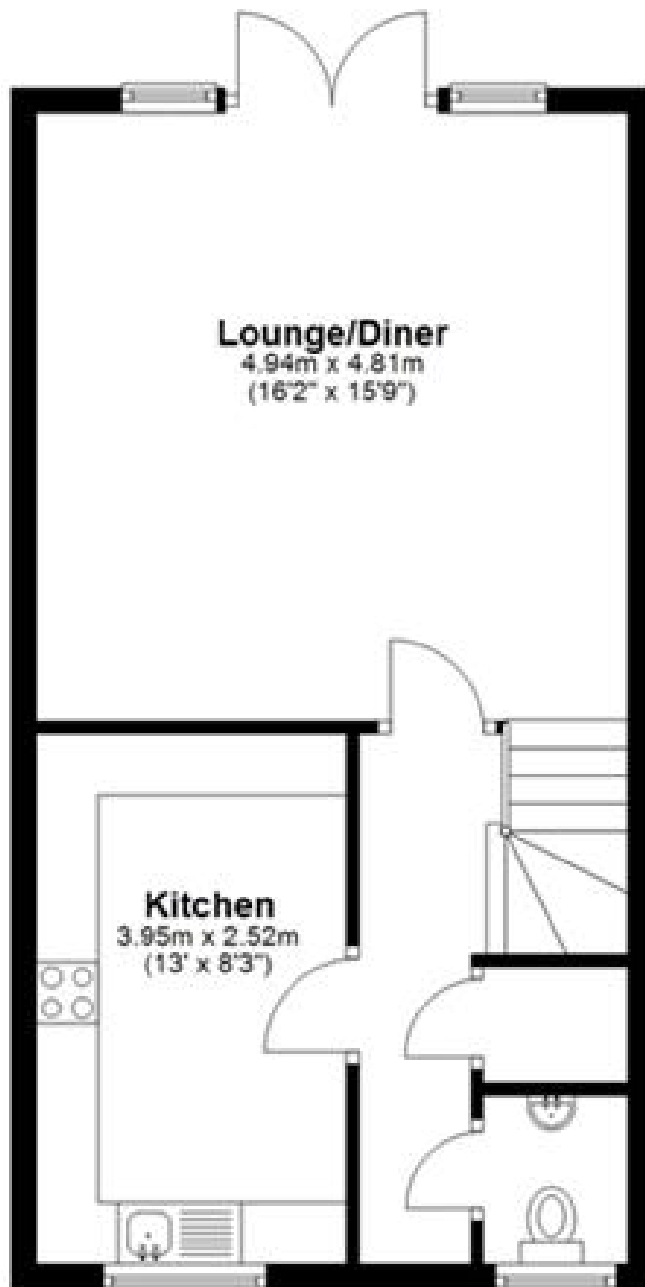
Bedroom 3 2.50m x 2.50m

Bathroom 2.10m x 2.51m



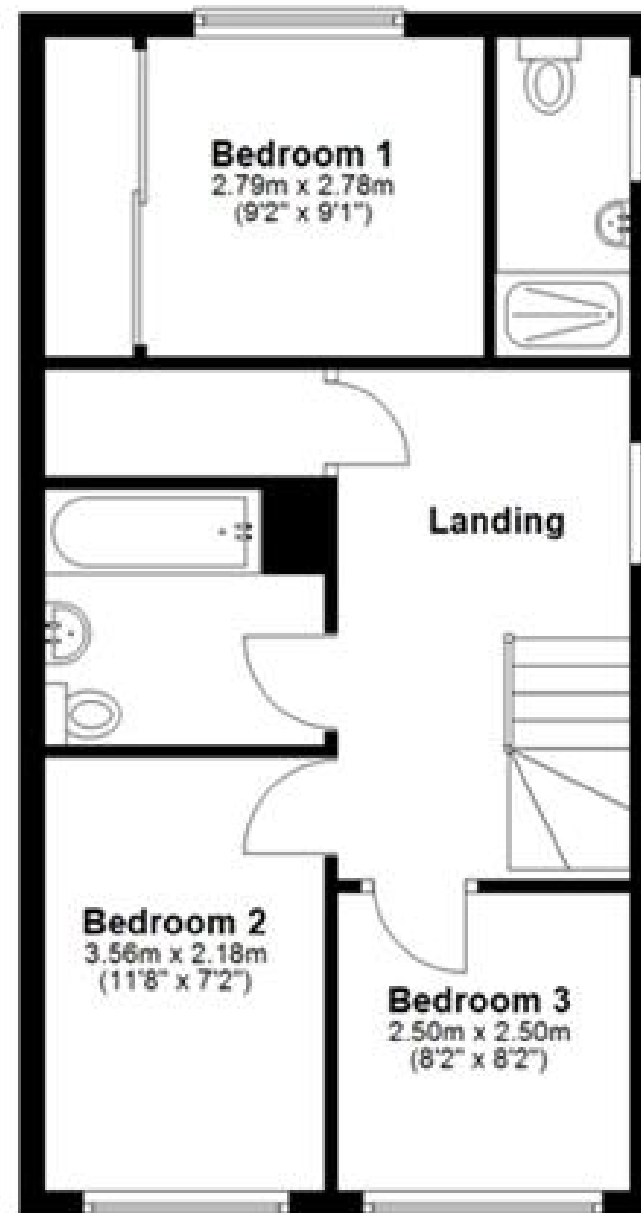
Ground Floor

Approx. 44.1 sq. metres (474.2 sq. feet)



First Floor

Approx. 46.3 sq. metres (498.7 sq. feet)



Total area: approx. 90.4 sq. metres (972.9 sq. feet)