



## 29 Vickers Lane

, Hartlepool, TS25 2DN

**£149,995**



Igomove are pleased to list this immaculately presented, contemporary, three bedroom semi detached townhouse in a new development in the popular location of Seaton Carew.

With all the seaside resort of Seaton Carew has to offer nearby, including shops, supermarkets, schools, restaurants, bars, cafes, parks and the beach, this beautifully presented home offers a wealth of key features including; contemporary living across three floors, superb lounge, sage finish dining/ kitchen, three excellent double bedrooms, master en-suite, modern family bathroom, double driveway and low maintenance, landscaped West facing rear garden.





Modern facade with driveway parking, porch entry into:

Superb lounge with window to the front elevation, contemporary flooring, with turned staircase to the first floor, under stairs cupboard

Dining/kitchen fitted with a superb range of wall, base and drawer cabinets, complimentary heat resistant surfaces, stylish modern tiling, integrated gas hob, integrated electric oven, plumbing for washing machine, integrated fridge freezer, plumbing for washing machine, well presented dining area with double doors overlooking the rear garden, ample space for dining table and chairs.

To the first floor landing spindled staircase and fitted cupboard ;

Bedroom two is a well proportioned double with neutral decor.

Immaculate family bathroom comprising close coupled push button WC, pedestal wash basin and panel bath, complimentary tiling and modern tiled flooring, fitted blind.

Bedroom three is also of double proportions, excellent decor.

To the second floor;

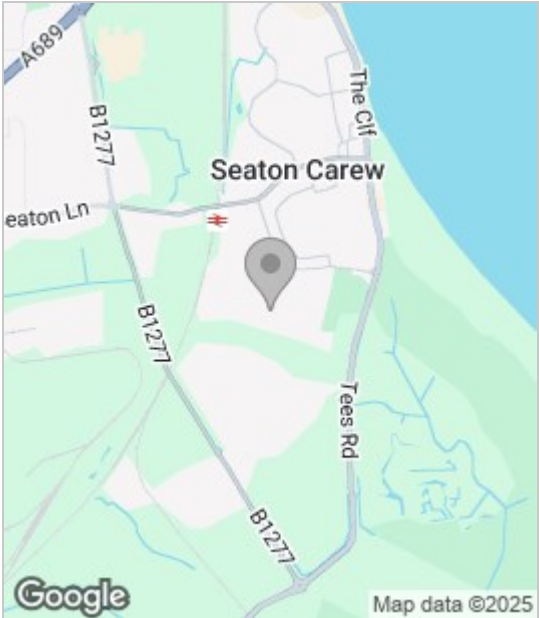
Master bedroom with window to the front elevation, fitted storage cupboard, immaculate, neutral decor.

En suite shower room comprising close coupled WC, pedestal wash basin and shower enclosure, velux window, contemporary flooring.

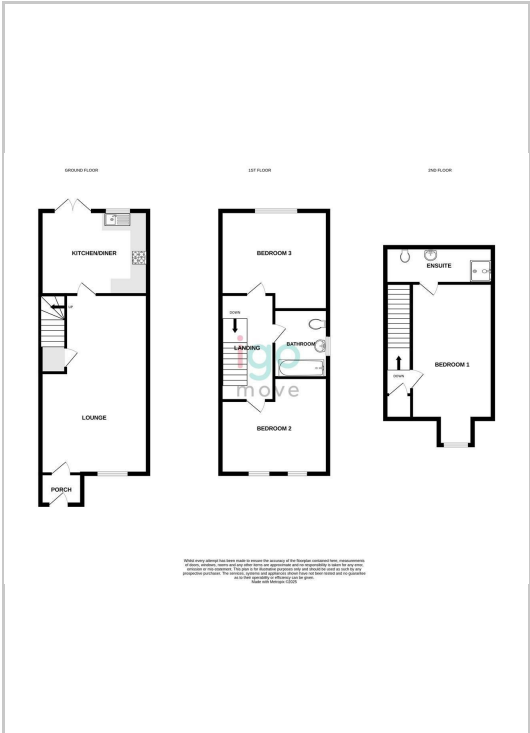
To the rear is a fully enclosed easily maintained west facing rear garden.

This superb contemporary home in a desirable location must be viewed to be appreciated.

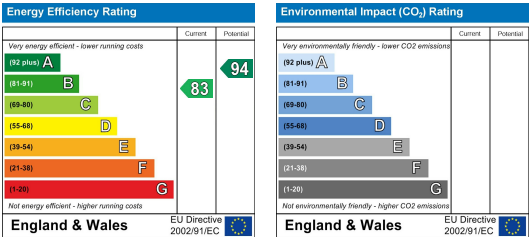
Area Map



Floor Plan



Energy Efficiency Graph



These particulars, whilst believed to be accurate are set out as a general outline only for guidance and do not constitute any part of an offer or contract. Intending purchasers should not rely on them as statements of representation of fact, but must satisfy themselves by inspection or otherwise as to their accuracy. No person in this firms employment has the authority to make or give any representation or warranty in respect of the property.