



26 Lady Mantle Close

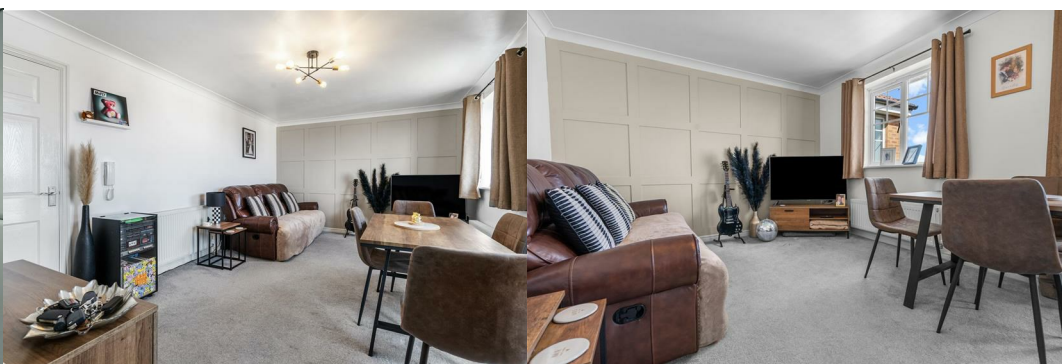
, Hartlepool, TS26 0RP

Offers In Excess Of £89,995

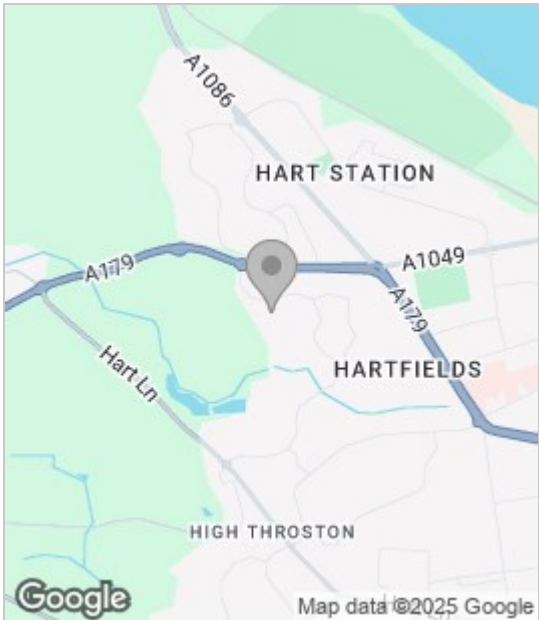


Igomove are pleased to present this stunning two bedroomed top floor apartment located in Bishop Cuthbert. This stylish apartment boasts many extras as well as fixtures and fittings of excellent standard. Not only does the residence comprise of spacious accommodation, the top floor exclusively benefits from magnificent sea views and the surrounding locality. The accommodation briefly comprises of two well sized bedrooms, newly fitted bathroom featuring a three piece suite, spacious open plan lounge/diner as well as a gorgeous kitchen.

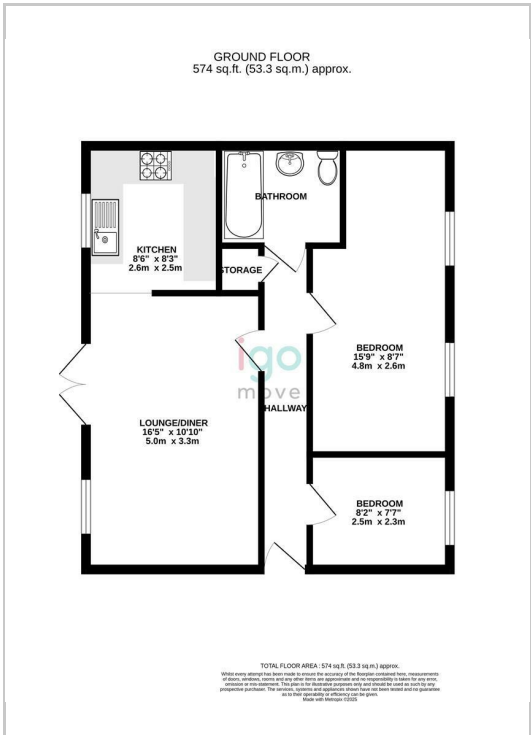
Make this home your own and book your viewing today. Igomove are open 7 days a week



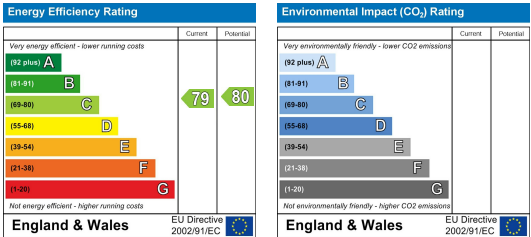
Area Map



Floor Plan



Energy Efficiency Graph



These particulars, whilst believed to be accurate are set out as a general outline only for guidance and do not constitute any part of an offer or contract. Intending purchasers should not rely on them as statements of representation of fact, but must satisfy themselves by inspection or otherwise as to their accuracy. No person in this firms employment has the authority to make or give any representation or warranty in respect of the property.