



The Green

Seaton Carew, , TS25 1AS

£499,999



Welcome to this exquisite property located in the prestigious area of The Green, Seaton Carew. This stunning detached house with self contained annex, boasting 5 reception rooms, 5 double bedrooms, and 4 bathrooms, providing ample space for luxurious living.

Situated right on the sea front, this property offers breathtaking views and a serene atmosphere that is truly unparalleled. The large detached building exudes charm and character, making it a unique and desirable place to call home.

With its spacious layout and prime location, this property presents a rare opportunity to live in a truly exceptional setting. Don't miss out on the chance to own a piece of paradise in Seaton Carew.

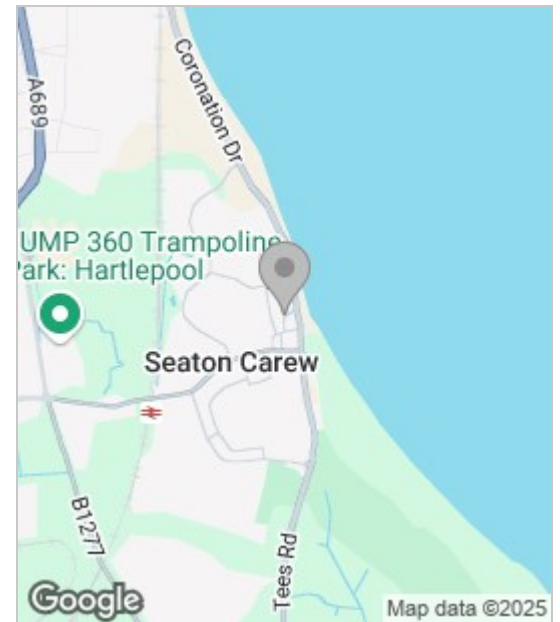


Upon arrival you are greeted by a lovely private entrance leading you up to the impressive family home. Entering the property, the level of finish and quality is immediately evident with its high ceilinged entrance hall and wooden flooring. From the very start, you will be struck by amazing light flooding the residence. The ground floor is well laid out with a lounge to either side of the hallway, dining room, kitchen, utility room, downstairs WC and conservatory making up the remainder of this floor. The rear facing rooms take full advantage of their position with exceptional views onto the rear garden.

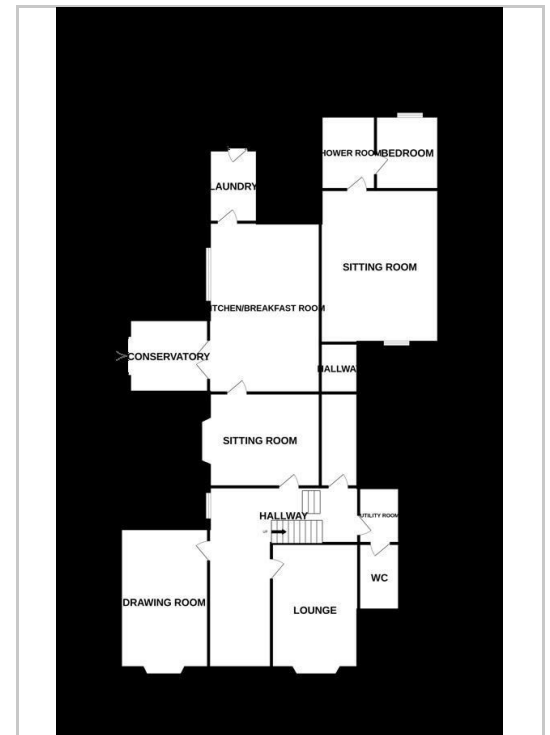
Making your way upstairs, you will find five beautifully proportioned bedrooms. Going the full way up the stairs, you will find a Jack and Jill suite which is a well proportioned space suitable for relaxation with views to front aspect. The shared en suite features a walk in shower, wash basin and WC. Moving along the residence, you will find another large bedroom featuring a grand master suite. Here lies an impressive bathroom which comprises of a large bath, walk/in shower, wash basin and two low level WC's. Moving down the hall, you are welcomed into another large bedroom with another tastefully decorated en-suite featuring a bath, wash basin and WC. Completing the upstairs accommodation is the final bedroom with views overlooking the rear garden.

Returning to the first floor you will find the descending staircase to the ground floor. This floor presents as an exceptional hosting and gathering space as all reception rooms are of impressive size featuring high ceilings and illuminated by natural light. Exiting the property, you are lured into the side courtyard which leads you into an annexe attached to the residence. This part of the property comprises of kitchenette, lounge with log burning fireplace, shower room/wc & bedroom. Externally to the rear there is an extensive garden with huge patio area.

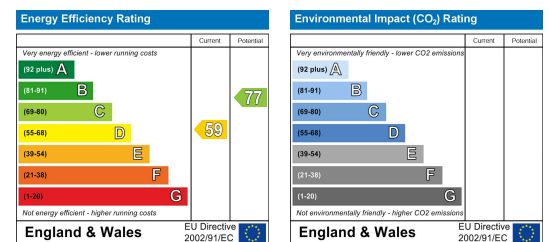
Area Map



Floor Plan



Energy Efficiency Graph



These particulars, whilst believed to be accurate are set out as a general outline only for guidance and do not constitute any part of an offer or contract. Intending purchasers should not rely on them as statements of representation of fact, but must satisfy themselves by inspection or otherwise as to their accuracy. No person in this firm's employment has the authority to make or give any representation or warranty in respect of the property.