



242 Wendover Road, Weston Turville
Aylesbury

Brions

Guide Price £850,000



242 Wendover Road

Weston Turville, Aylesbury

Council Tax band: E

Tenure: Freehold

EPC Energy Efficiency Rating: C

EPC Environmental Impact Rating: D

- Weston Turville
- Master bedroom with dressing room and en suite
- Self-contained annex/outbuilding
- Large conservatory
- Utility Room & Downstairs WC
- Generous off-road parking
- Detached
- Four/Five Bedrooms

242 Wendover Road

Living Spaces

Two generous reception rooms offer flexibility for family living or entertaining. One includes an en suite, ideal for guests or extended family. A separate dining room provides the perfect space for hosting.

Kitchen and Utility

A bright, modern kitchen leads into a spacious utility room. From the kitchen, step into a full-width conservatory that also connects to the lounge — perfect for relaxing with a view of the garden.

Work from Home

A dedicated office space provides privacy and comfort for remote working or studying

Upstairs

Main Bedroom Suite

The primary bedroom features countryside views, its own en suite, a dressing area, and a cosy seating space — a private retreat to unwind in.

Additional Bedrooms

The second double bedroom also has an en suite, offering comfort and privacy for guests or older children. Two further bedrooms share access to the family bathroom.





Outdoor Space

Enjoy a large rear garden perfect for families, gardening, or entertaining. The detached annex/outbuilding (approx. 55.4 sqm) offers a fantastic opportunity for a studio, home office, guest accommodation, or hobby space. There is also a garage and ample driveway parking to the front.

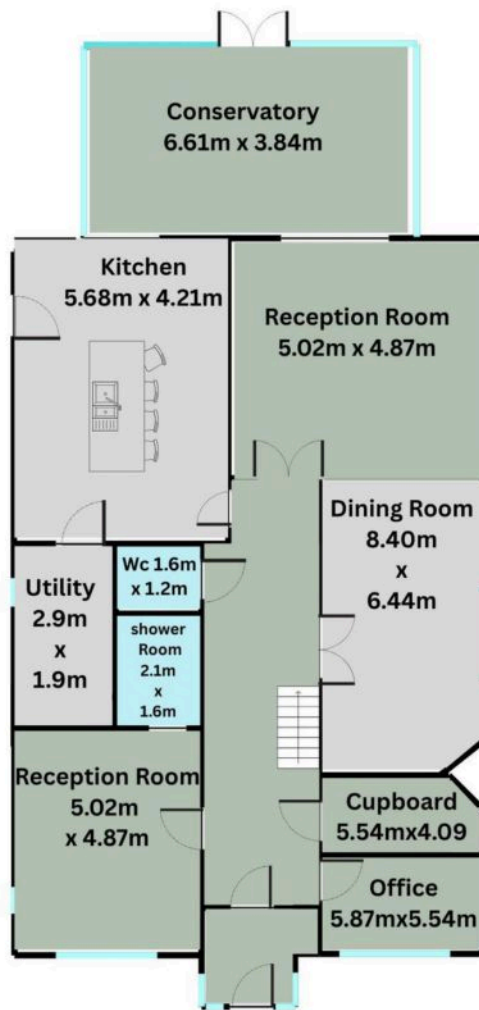
Life in Weston Turville

Located between Wendover and Aylesbury, Weston Turville is a desirable village with:

- Local convenience stores
- A well-regarded primary school
- Three welcoming pubs
- Weston Turville Reservoir, perfect for walking, sailing, and fishing
- A thriving rugby club and nearby golf course

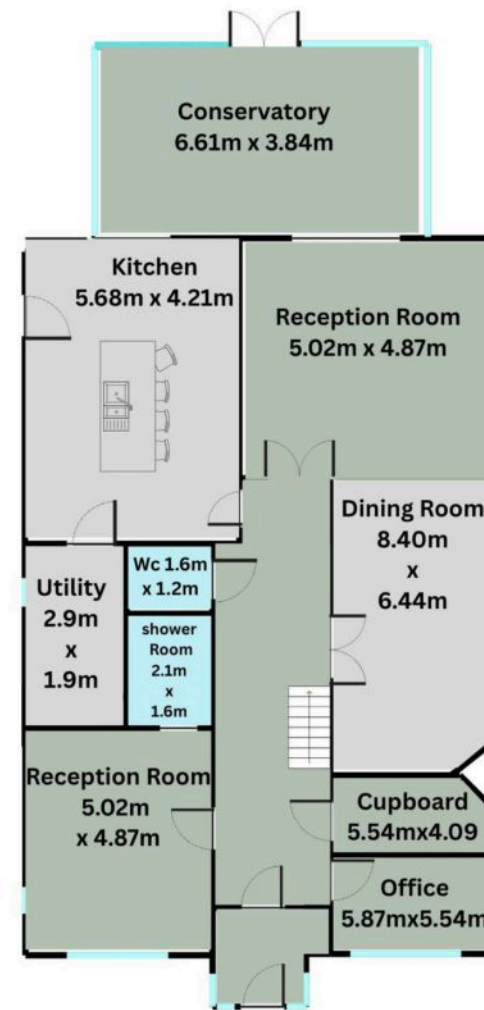






Total rooms area: 156.4 sq m
Total area: 156.4 sq m
SIZES AND DIMENSIONS ARE APPROXIMATE, ACTUAL MAY VARY.
FOR ILLUSTRATIVE PURPOSES ONLY.

vuabi **RCS**



Total rooms area: 156.4 sq m
Total area: 156.4 sq m
SIZES AND DIMENSIONS ARE APPROXIMATE, ACTUAL MAY VARY.
FOR ILLUSTRATIVE PURPOSES ONLY.

vuabi **RCS**



Brions

1 Cromwell Court New Street, Aylesbury – HP20 2PB

01296 532326 • info@brions.co.uk • brions.co.uk/