

## St Lawrence Terrace, W10



**Gorgeous Townhouse in the Heart of Portobello Road and Ladbroke Grove**

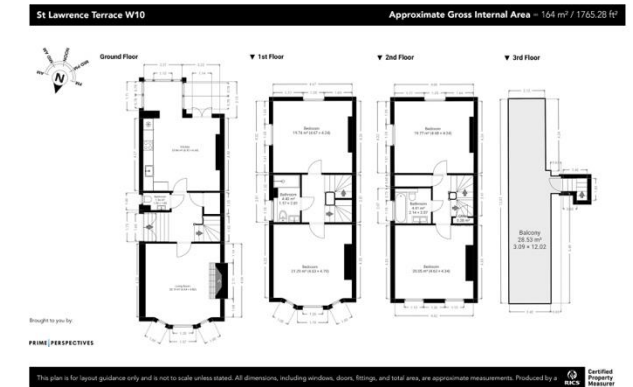
## St LAWRENCE TERRACE, W10

A beautifully refurbished townhouse in the heart of Portobello Road and Ladbroke Grove, offering exceptional living across four floors. This stunning four-bedroom, two-bathroom home has been finished to the highest standard and features a spectacular top-floor terrace with panoramic city views.

From the elegant entrance to the striking stairway, every detail of this home speaks of considered design and refined quality. The sleek, modern kitchen is fully fitted with top-tier appliances, perfect for both everyday living and entertaining. The crowning feature is a private roof terrace—a peaceful retreat in the midst of the city.

**£3,045.00 per week**  
 Available Now  
 Long-term Let  
 Council Tax Band: G | EPC Rating: E  
 Holding Deposit: £3,045  
 Security Deposit: £18,270  
 This gorgeous home is available now.

- ✓ Four Spacious Bedrooms
- ✓ Two Modern Bathrooms
- ✓ Recently Refurbished to a High Standard
- ✓ Stylish Kitchen with Premium Appliances
- ✓ Private Roof Terrace with Panoramic Views
- ✓ Prime Location near Portobello Road & Notting Hill
- ✓ Excellent Transport Links





**BRAND  
INC**  
RESIDENTIAL

T 00 44 20 8960 7988

E [info@brandincresidential.com](mailto:info@brandincresidential.com)

W [www.brandincresidential.com](http://www.brandincresidential.com)

A Studio 4.09, Grand Union Studios, 332 Ladbroke Grove, London, W10 5AD



*THE HOME OF  
GREAT PROPERTY*